

DATA CENTER RACK

Elevate DCR Series

Contents

Introduction	3
Elevate Data Centre Rack key features	4
Dimensions	8
Construction	9
Frame	9
Roof	10
Door	11
Airflow Management features	12
Cable Management options	13
DCR 600 mm wide with Airflow Management Pack	14
DCR 800 mm wide with Airflow Management Pack	15
Specification	16
Accessories	18

Elevate Data Centre Rack (DCR series)

The Elevate DCR series forms part of a wider range of passive cabling, rack and containment solutions designed to meet the demands of the high availability, energy efficient, data centre and high power compute environments.

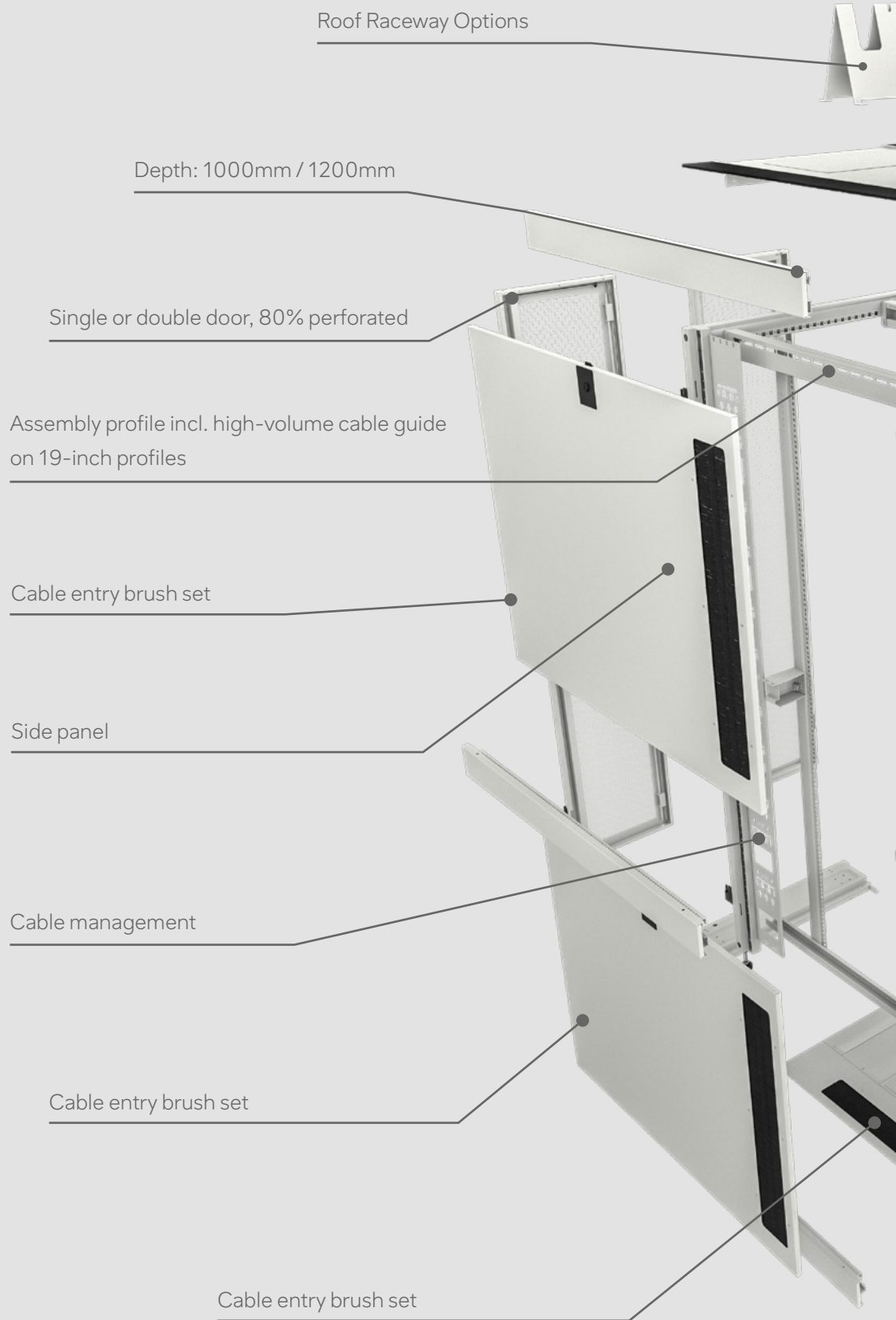
This brochure aims to introduce the DCR series range, its features and benefits, you will find further details on our web site, or through contacting your local sales representative or distributor, or better still come and view the racks at either our London or Birmingham showrooms.

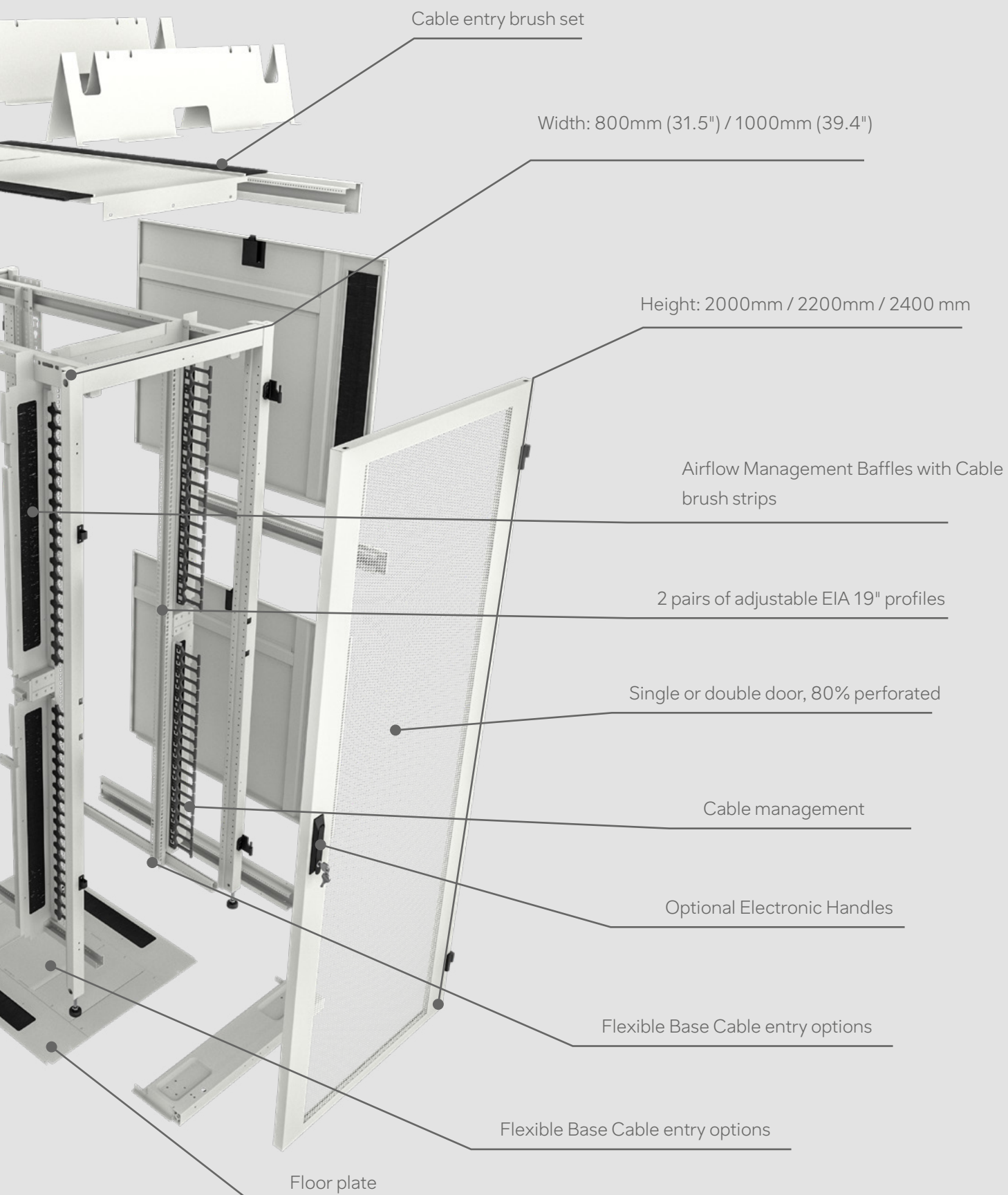
Elevate DCR brings a range of size options, choice of colour, multiple airflow and cable management features, paired with high load bearing and aesthetically attractive design all supported by an extended warranty programme of 25 years when installed with Elevate cabling.

When developing the Elevate brand we have not just considered the application and mission critical nature of the DC/HPC market, but also the need to support clients with a high flexible and responsive supply chain. Our UK assembly enables fast lead times throughout EMEA, customisable configurations, matched with sustainable packaging and delivery options. We bring the future faster.

To directly complement the DCR series the Elevate solution includes hot and cold aisle containment, and through our technology partner NVent advanced liquid cooling and high density intelligent in rack power distribution units.

Elevate Data Centre Rack key features





Data Centre Racks - DCR Series

With this portfolio of pre-configured racks we cover a wide range of applications to serve most common data center needs. Combined with a range of accessories, these racks can be further tailored to the clients requirements.

The Elevate advantage

UK assembly and QA, with stocked specifications typically available for next day delivery.

Optimal Airflow Management for better energy and equipment performance come as standard.

Compatible with Elevate aisle containment and NVent RDHx and HD Intelligent Power Distribution.

Highly customisable to client specification with short design and lead time.

Optional electronic handles are also available for MiFare card access control and remote monitoring.

25 Year Product Warranty as standard when installed with Elevate cabling solutions.



DCR Series, 600mm and 800mm wide with airflow management kits included as standard.

Product code no. to be created by adding to Product Base Code, i.e.:

546-47812-VDBF-WH = 47U Rack, 800 mm wide, 1200 mm Deep, Single Vented Front Door, Double Vented Rear Doors, Both Side Panels fitted, Front Finger Cable Management, Colour RAL 9003



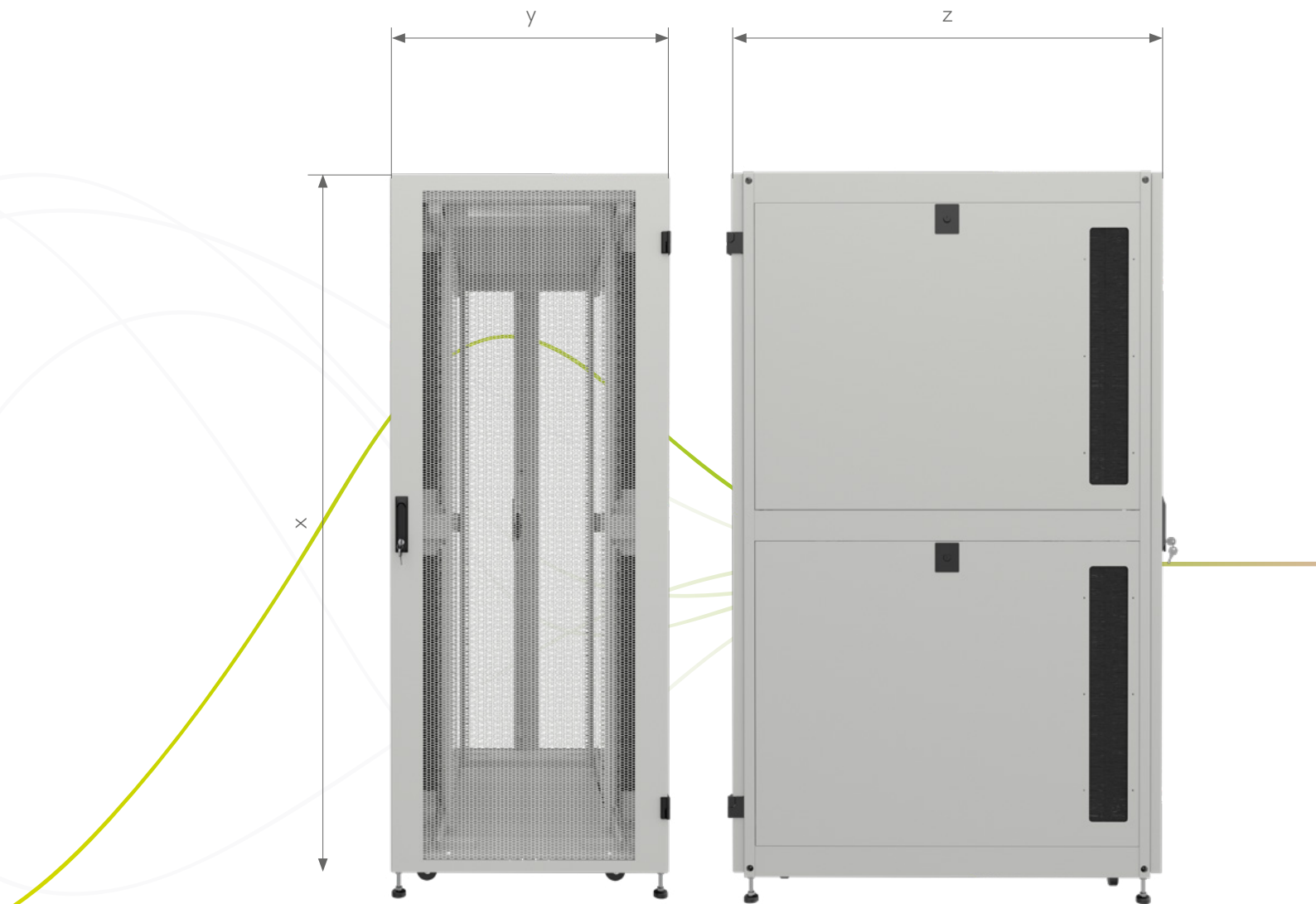
RAL 9003

RAL 9004

Product Base: 546	Height Options			Width Options		Depth Options		Front Door 80% Perforated	Rear Door 80% Perforated	Side Panels	Cable Management	Colour	
Part Code:	-42	-47	-52	6	8	10	12	V (single)	D (double)	B	F	-BK	-WH
Height (U)	42	47	52										
Dimensions (mm)	2000	2220	2440	600	800	1000	1200						
Front door								Single					
Rear door									Double				
Side Panel										Both Sides			
Front Cable Management											Finger		
RAL												9004	9003
Max. load	1500kg when mounted on jacking feet, 2000kg when mounted directly on to floor												
Handles	Standard Mechanical Swing Handle												
Roof layout	Front to back brush strips, both sides, Fan Tray option												
Side Panel Type	Brush Strips included at front edge of panel												
Air Flow Management	Full kit included around 19" profiles												
Castors and Jacking Feet	Included as standard												
Cable Trays	135 mm wide, both sides at the rear												

Dimensions

The standard dimensions in which the DCR series are available are shown below.

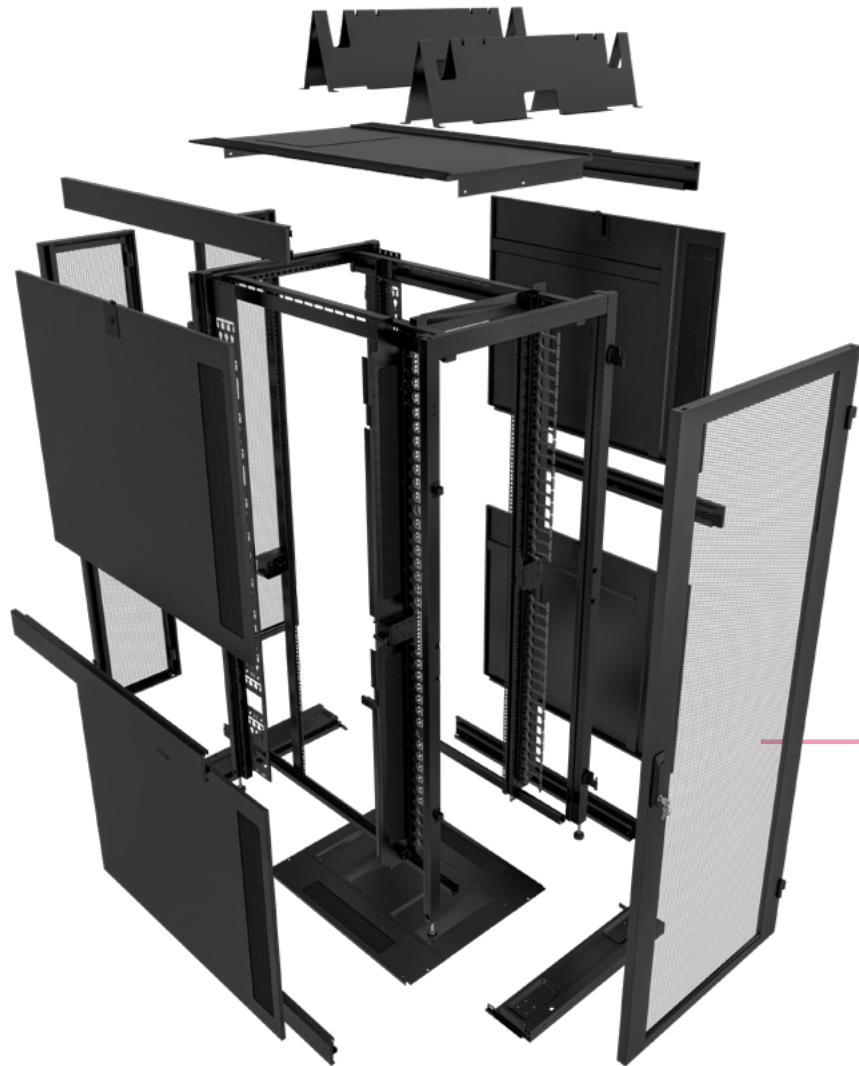


x - height: 2000mm (42U), 2220mm (47U), 2440 (52U)

y - width: 600mm, 800mm

z - depth: 1000mm, 1200mm

Construction



Frame

Steel construction chassis provides strong support to main 19" Rails with capability to handle 2000 kg of static load when racks are mounted directly onto the floor.

Offers easy flexibility through adjustable mounting rail profiles on front and rear of the rack with pre-marked positions.

Standard Rack profile holes take M6 Cage nuts easily installed into any required position.

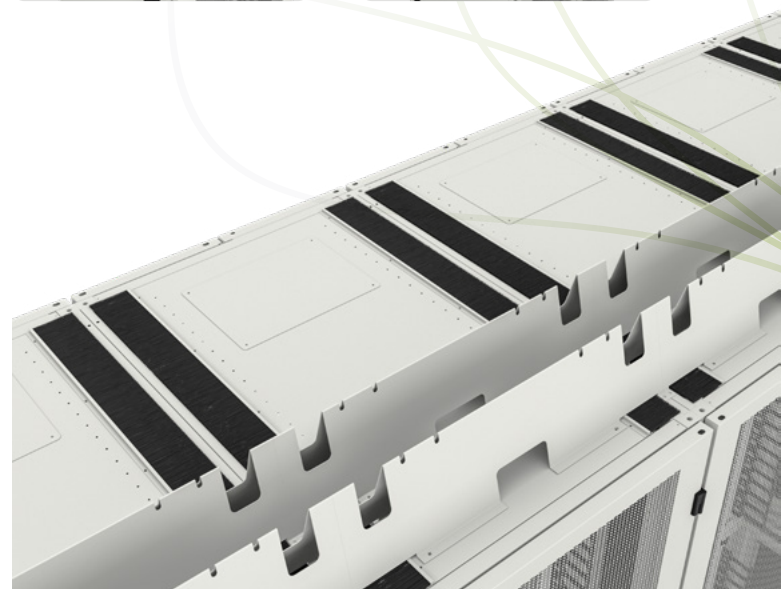
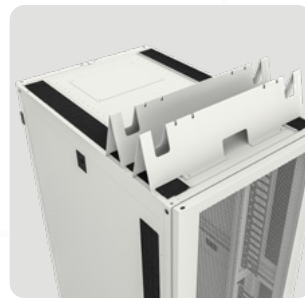
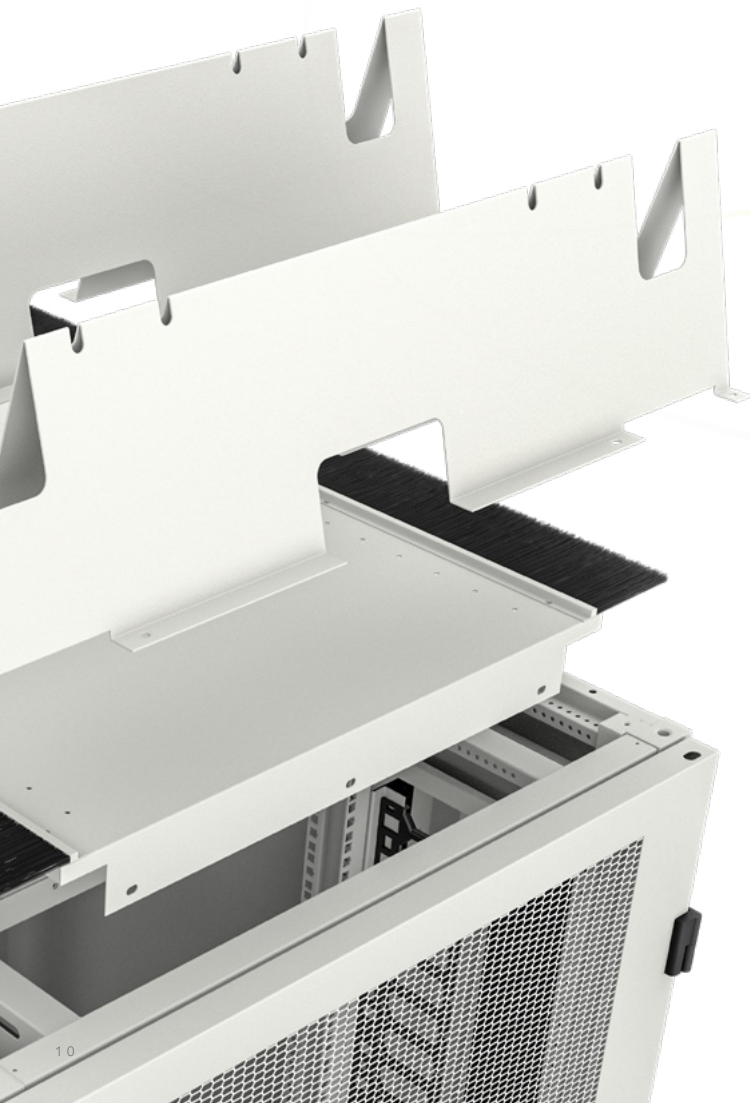
Airflow Management baffles move back and forth with the front profiles.

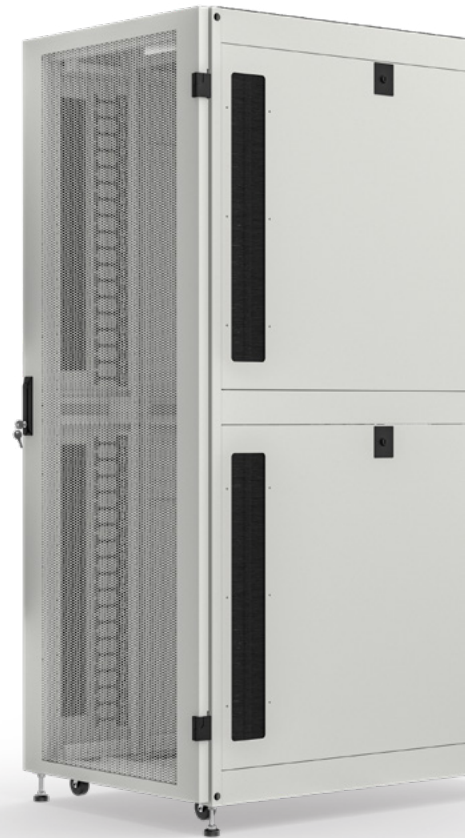
Racks come with positioning castors and jacking feet as standard.

Features

Roof

- ✓ Extra cut-out in the middle for cable management (high-volume), brushes or fan-unit
- ✓ Optional 200mm Roof inserts available
- ✓ Optimal accessibility for cabling
- ✓ Improved roof access for 16A and 32A Commando power plugs
- ✓ Optional accessories for Roof Raceway channels





Door

- ✓ Toolless door removal and installation
- ✓ Clean and minimalistic design
- ✓ High level perforation at 80%
- ✓ Multipoint point locking as standard
- ✓ Option to upgrade to electronic smart lock
- ✓ Door reversible (left/right hinged)
- ✓ Door can open 165° in case of bayed racks
- ✓ Door can open 260° in case of stand-alone racks



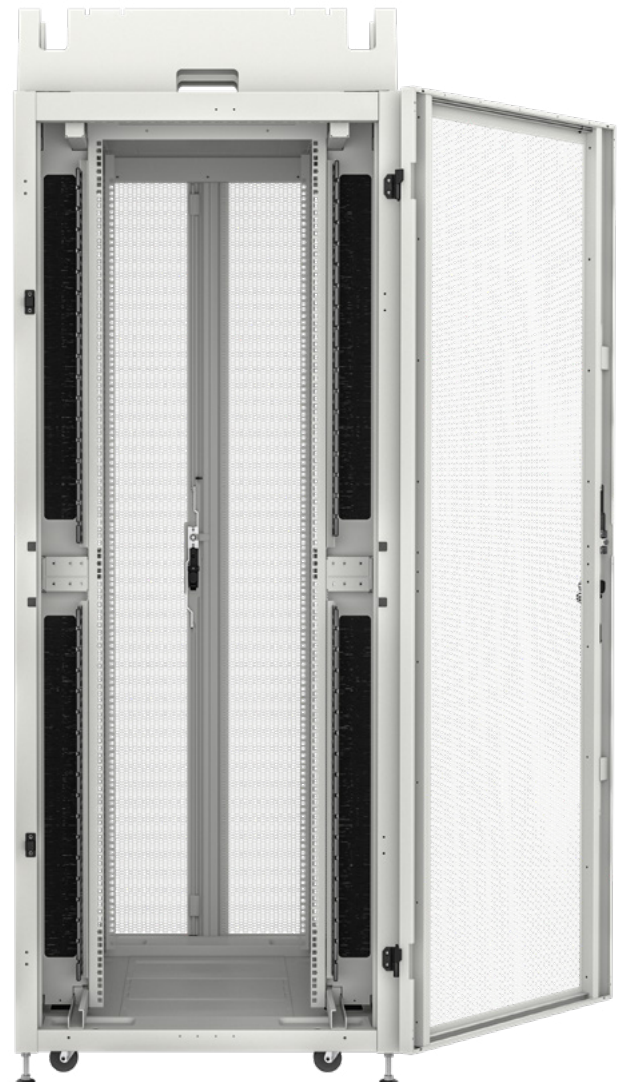
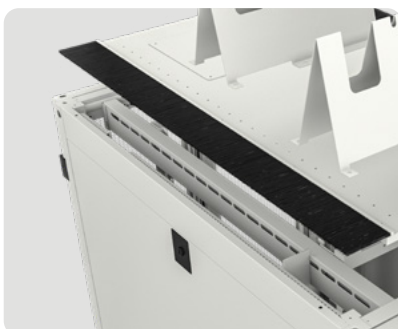
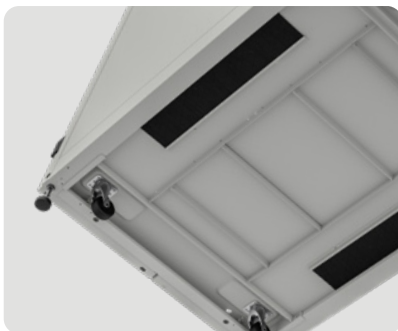
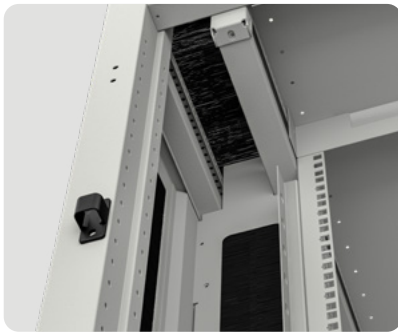
Airflow management features included

Airflow Management Baffles are a key design feature of the Elevate DCR series and provide effective management of airflow ensuring cold air is directed through active equipment in the rack.

The DCR Series Airflow Management baffles are attached to the 19" profiles and therefore move back and forth at the same time as any adjustments are made to the profile positions. Upper and lower baffle plates ensure a complete seal around installed equipment and any unused space can be filled with 19" blanking panels.

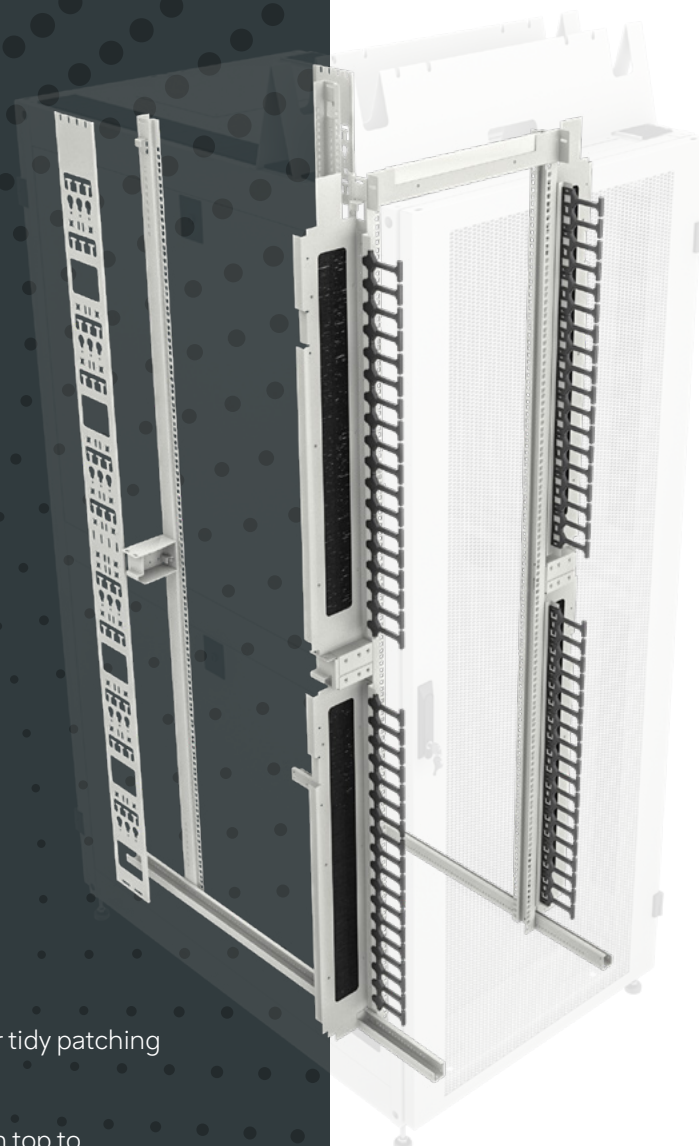
Vertical finger cable management is fitted to each baffle plate, in addition each baffle is formed from overlapping high density brush through which cables can be passed to improve both aesthetics and reduce impact on airflow from installed cabling.

- ✓ Design ensures effective barrier to cold air flow
- ✓ Improve efficiency ensure cold air is guided through active equipment
- ✓ Fully adjustable to suit customer rack configuration



Cable management options

- ✓ Finger Cable management allows for tidy patching minimise interruption on air flow
- ✓ Provides for cable management from top to bottom of the rack
- ✓ Support cabling where fed through baffle brush opening or side panel openings
- ✓ PDU Cable tray at rear support cable management into the rack



Models may differ slightly from final products



DCR Series, 600 mm wide with airflow management pack

Stand-alone rack Signal White RAL 9003	546-42610-VDBF-WH	546-42612-VDBF-WH
Stand-alone rack Signal Black RAL 9004	546-42610-VDBF-BK	546-42612-VDBF-BK
Stand-alone rack Signal White RAL 9003	546-47610-VDBF-WH	546-47612-VDBF-WH
Stand-alone rack Signal Black RAL 9004	546-47610-VDBF-BK	546-47612-VDBF-BK
Stand-alone rack Signal White RAL 9003	546-52610-VDBF-WH	546-52612-VDBF-WH
Stand-alone rack Signal Black RAL 9004	546-52610-VDBF-BK	546-52612-VDBF-BK
Height in U	42 / 47 / 52	42 / 47 / 52
Height in mm	2000, 2220, 2440	2000, 2220, 2440
Width in mm	600	600
Depth in mm	1000	1200
Front Door	80% perforated single	80% perforated single
Rear Door	80% perforated double	80% perforated double
Max Load (static)	2000kg*	2000kg*
Security	3 point locking	3 point locking
Roof Layout	2 side long brush strips	2 side long brush strips
19-inch Profiles	4 pcs coloured to rack	4 pcs coloured to rack
Castors and Feet	Included as standard	Included as standard
Delivered with the Cab	M6 x 20 Cage nuts & screws	M6 x 20 Cage nuts & screws

*Where Castors and Jacking feet not used





DCR Series, 800 mm wide with airflow management pack

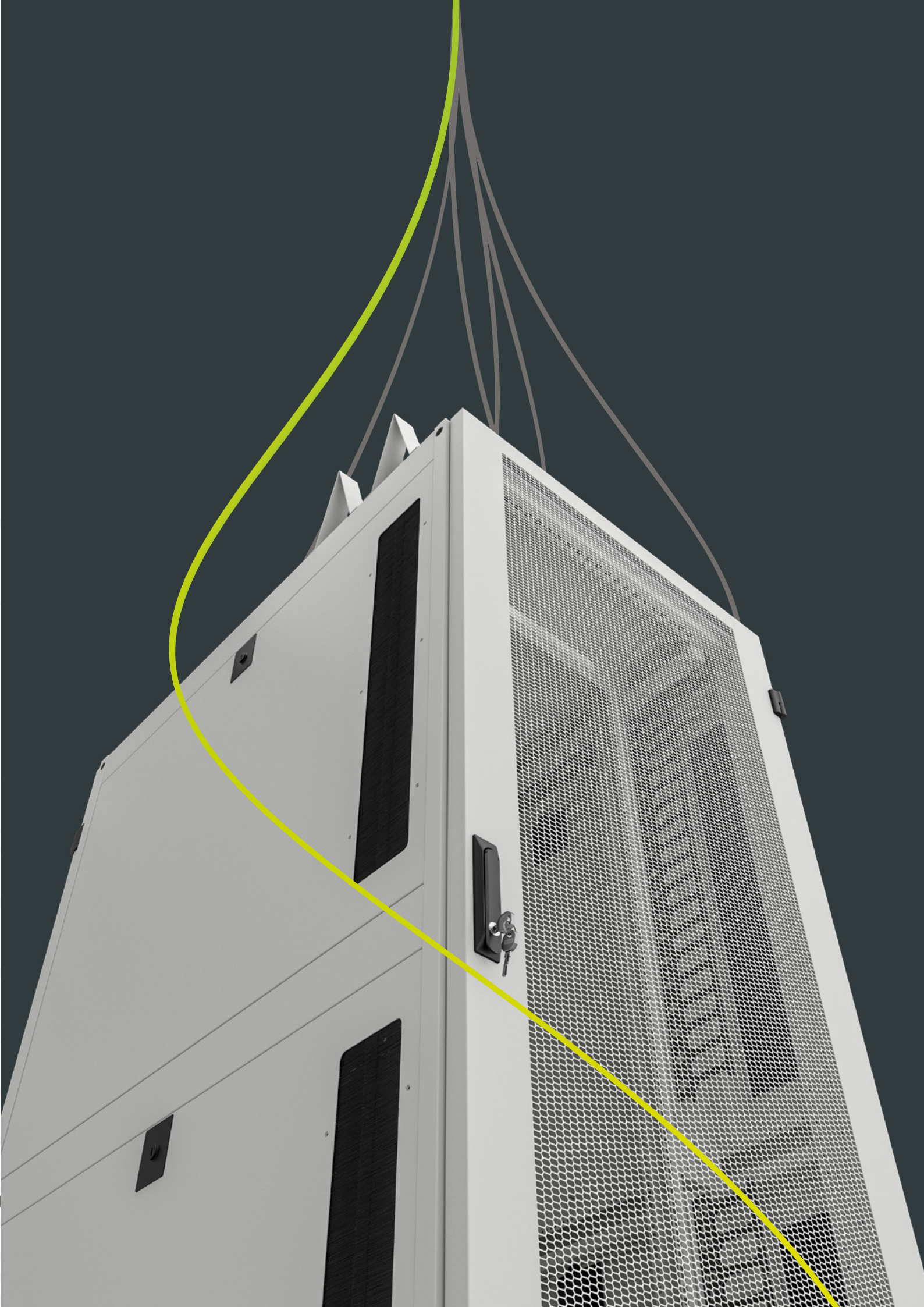
Stand-alone rack Signal White RAL 9003	546-42810-VDBF-WH	546-42812-VDBF-WH
Stand-alone rack Signal Black RAL 9004	546-42810-VDBF-BK	546-42812-VDBF-BK
Stand-alone rack Signal White RAL 9003	546-47810-VDBF-WH	546-47812-VDBF-WH
Stand-alone rack Signal Black RAL 9004	546-47810-VDBF-BK	546-47812-VDBF-BK
Stand-alone rack Signal White RAL 9003	546-52810-VDBF-WH	546-52812-VDBF-WH
Stand-alone rack Signal Black RAL 9004	546-52810-VDBF-BK	546-52812-VDBF-BK
Height in U	42 / 47 / 52	42 / 47 / 52
Height in mm	2000, 2220, 2440	2000, 2220, 2440
Width in mm	800	800
Depth in mm	1000	1200
Front door	80% perforated single	80% perforated single
Rear Door	80% perforated double	80% perforated double
Max Load (static)	2000kg*	2000kg*
Security	3 point locking	3 point locking
Roof Layout	2 side long brush strips	2 side long brush strips
19-inch profiles	4 pcs coloured to rack	4 pcs coloured to rack
Castors and Feet	Included as standard	Included as standard
Delivered with the cab	M6 x 20 Cage nuts & screws	M6 x 20 Cage nuts & screws

*Where Castors and Jacking feet not used

Specification

The Elevate DCR Series are perfectly suited for the installation of high density compute, networking, cabling and storage equipment.

Dimensions	Height (U)	42 / 47 / 52
	Height (mm)	2000, 2220 or 2440
	Width (mm)	600 or 800
	Depth (mm)	1000 or 1200
General	Colour	RAL 9003 Grey White, 9004 Black
	Static Load capacity (kg)	1500 or 2000 if direct to floor
	Earthing	Earth kit included
	IP grade	IP20
	Standards	IEC-60297-2, ANSI/EIA RS310-D
Interior	19 Inch profiles	4 pcs, 2mm Steel, Powder coated
	Adjustability Depth	Fully adjustable with depth indicators
	U Marking	Bi-directional sequential marking
	Position Front Profiles	Pre-installed 138mm to Front
	Position Rear Profiles (1000D)	Default at 532mm Max, 600w 532mm, 800w 732mm
	Position Rear Profiles (1200D)	Default at 732mm, max 972mm
Frame	Material	Steel Frame
	Finishing	Power coated
Front/rear closure	Front Door	80% perforated single front door
	Rear Door	80% perforated double rear door
	Security	2 point front locking, 3 point rear locking with cylinder lock
	Material	Steel
	Finishing	Powder Coated
	Hinges	Reversable hinges
Side Panel	Features	Quick Slam latch, cable brushes, or plain
	Finishing	Power Coated
Roof	Features	Side length 90mm brush strips
	Finishing	Power Coated
	Accessories	Fan Tray, Cable Raceway, Brush Strip covers



Accessories



INCLUDED

Castors and transport castors

Castors are included with the rack and are suitable for easy manoeuvre and positioning of the rack prior to full installation, the front two wheels are lockable.



INCLUDED

Baying kits

Baying kits are needed to connect racks together, these are included with the racks. They are external connector plates can be screwed onto the outsides of the structural uprights. Make at least 2 connections in the front and back planes.





OPTIONAL

Earth rails

Earth Bar kit with isolation mounts. Earth bar kits are designed to mount either onto the vertical mounting angle or into the side of the rack and come with isolation mounts for 1U rack mounting or locating anywhere on the rack. They offer an easy way of ensuring that all active equipment can be grounded. Earth bars can be used with p/n EBL20 clamps.



OPTIONAL

Toolfree quickfix blanking airflow management

The front plate is used for creating an airtight seal of the 19-inch surface. When this front plate was designed, the emphasis was on the ease of installation. The front plate can therefore be fitted in next to no time. A special plastic connector is used for fitting the front plate between the 19-inch profiles. You do not need any tools for the installation!

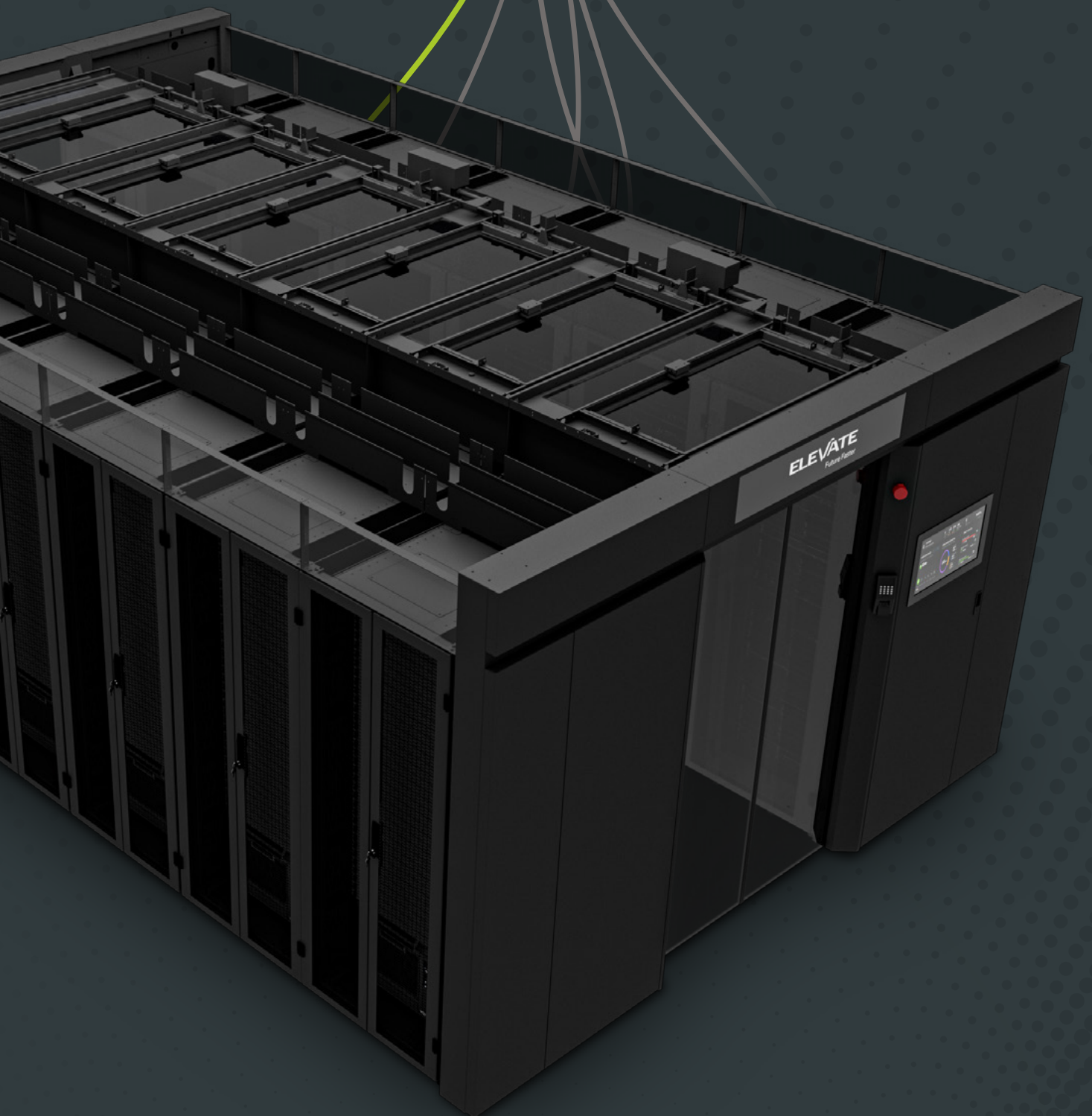


OPTIONAL

Electronic handles

An electronic handle and lock is available to suit the DCR series. The upgrade option uses the H3-EM-66-100 Southco Lock, with 3-point locking swing style handle, and fits to the existing rods supplied with the rack, front and back.

Elevate Aisle Containment



nVent Cooling





ELEVATE

Future Faster

elevate@excel-networking.com

elevate.excel-networking.com



 an excel solution