

FAMILY BROCHURE

Elevate VSFF Solution

Contents

Introduction	3
SN Patch Panel	6
SN Patch Cords	10
SN-MT Patch Panel	12
SN-MT Patch Cords	16
HD Cassettes	20

Elevate VSFF Solution

The Elevate VSFF Solution represents the next generation of high-density fibre connectivity, engineered to meet the evolving demands of modern data centres and enterprise networks. Leveraging industry-leading SENKO SN and SN-MT technology, the Elevate range delivers exceptional fibre capacity, streamlined installation, and future-ready flexibility - all within a compact footprint.

Whether supporting hyperscale deployments, high-performance computing, or agile enterprise environments, Elevate VSFF ensures your network infrastructure is robust, scalable, and ready for tomorrow's challenges.

Elevate VSFF Solution

Maximum Density, Minimal Footprint

Achieve up to 3456 fibres in a single 1U rack space with Elevate SN-MT panels, setting a new standard for space efficiency.

Future-Proof Flexibility

The Elevate range supports both SN and SN-MT connectivity, offering seamless migration paths and compatibility with evolving network architectures.

Simplified Installation & Maintenance

Integrated cable management and clear labelling features ensure fast, tidy deployments and effortless ongoing maintenance.

Performance Without Compromise

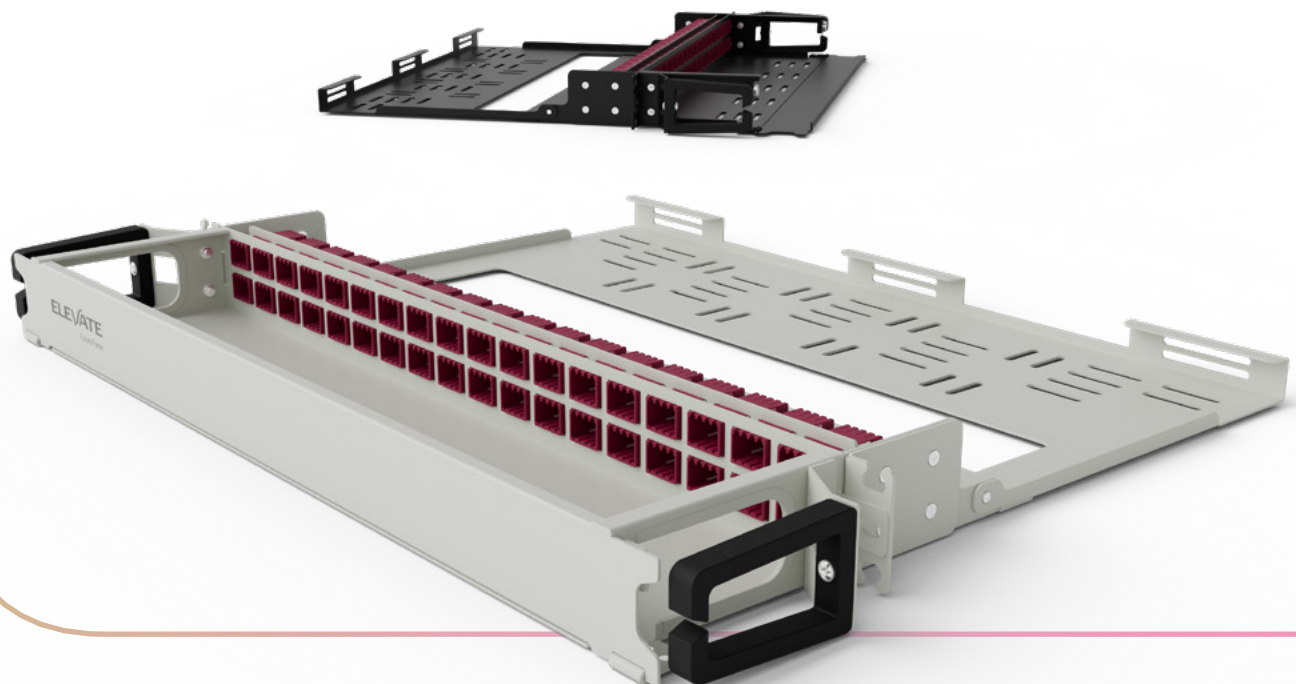
Low-loss connectivity and robust design guarantee reliable, high-speed data transmission for mission-critical applications.

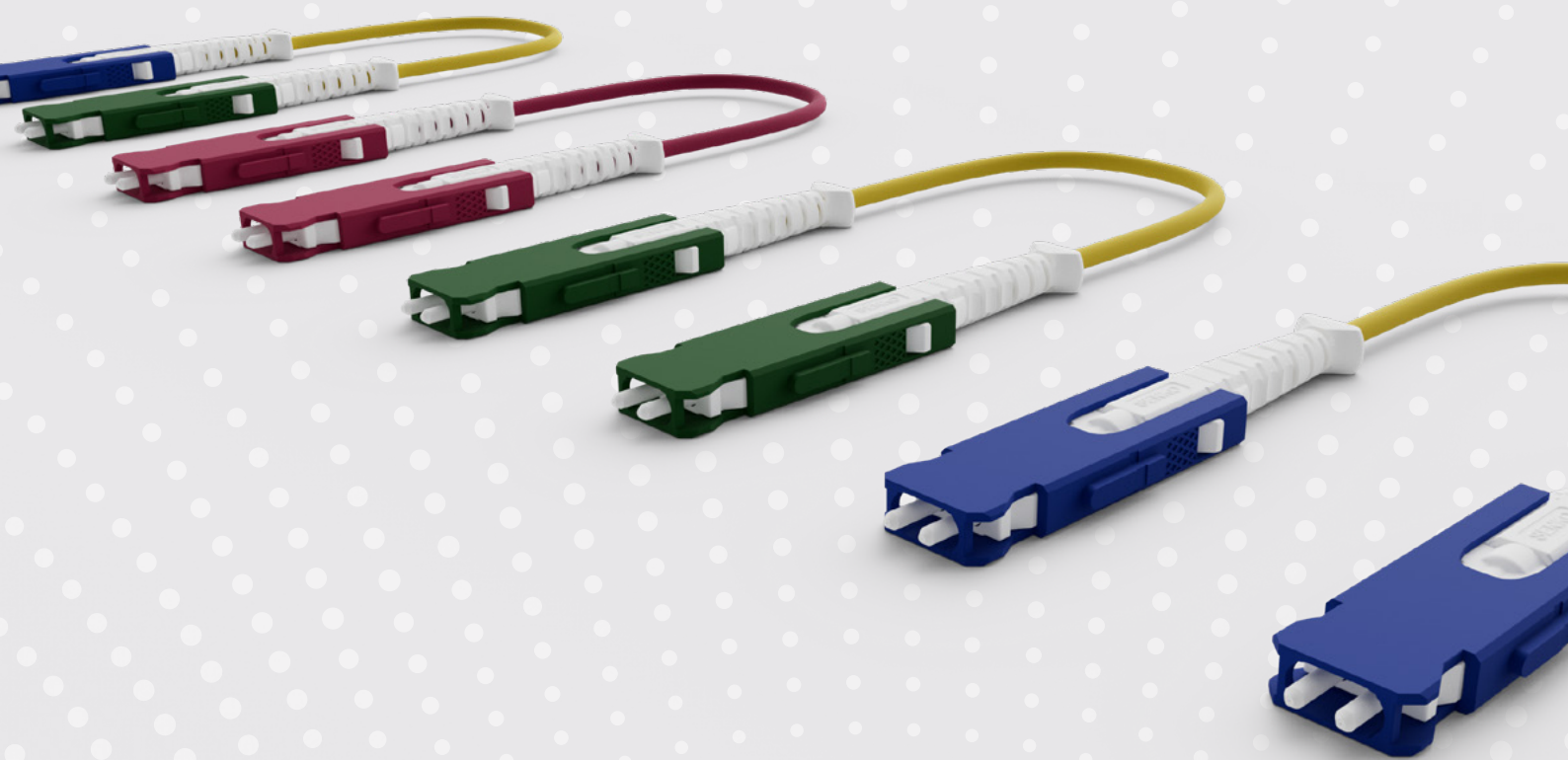
Versatile Application

Ideal for hyperscale, edge, and enterprise data centres, as well as telco, finance, and broadcast environments.

Cost-Effective Scalability

Reduce total cost of ownership with flexible, modular solutions that adapt as your network grows.



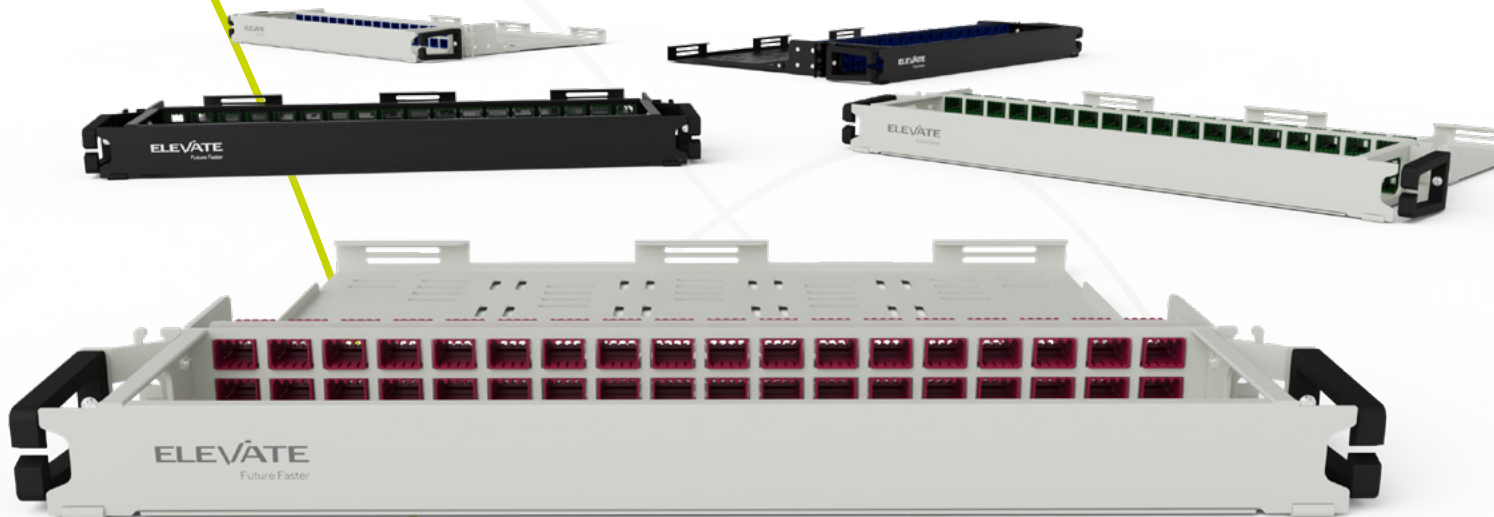


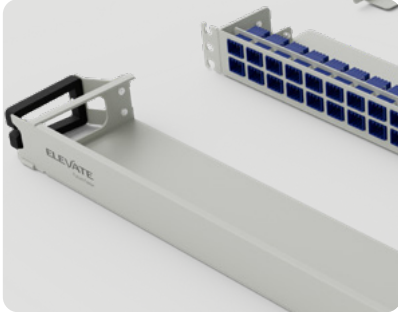
SN Patch Panel

Designed for maximum density in modern networks, the Elevate VSFF patch panels utilize industry-leading SENKO SN connectivity. These best-in-class panels offer superior fibre capacity within a single 1U rack space up to 432 fibres using SN connectivity.

To ensure efficient installation and maintenance, these panels feature convenient additions, including Integrated front cable management for neat and easy routing, A hinged front cover with a dedicated area for clear labelling and identification.

- ✓ High-density patch panels
- ✓ Spine/Leaf architectures
- ✓ Switch replication
- ✓ Opto-electronic equipment
- ✓ WDM equipment
- ✓ MUX and DEMUX equipment
- ✓ Mass server consolidation EoR, MoR

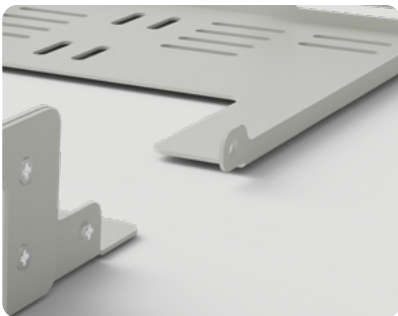




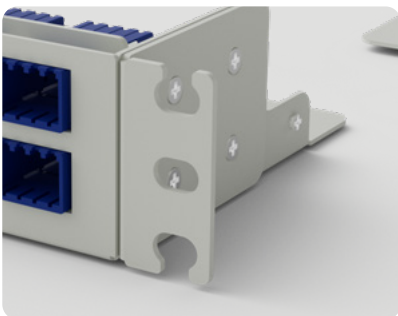
- ✓ Hinged front door - removable front management with labelling panel on inside face



- ✓ Designated cable hoops to aid fibre management



- ✓ Removable hinged rear management, increased depth to accommodate larger trunk cables



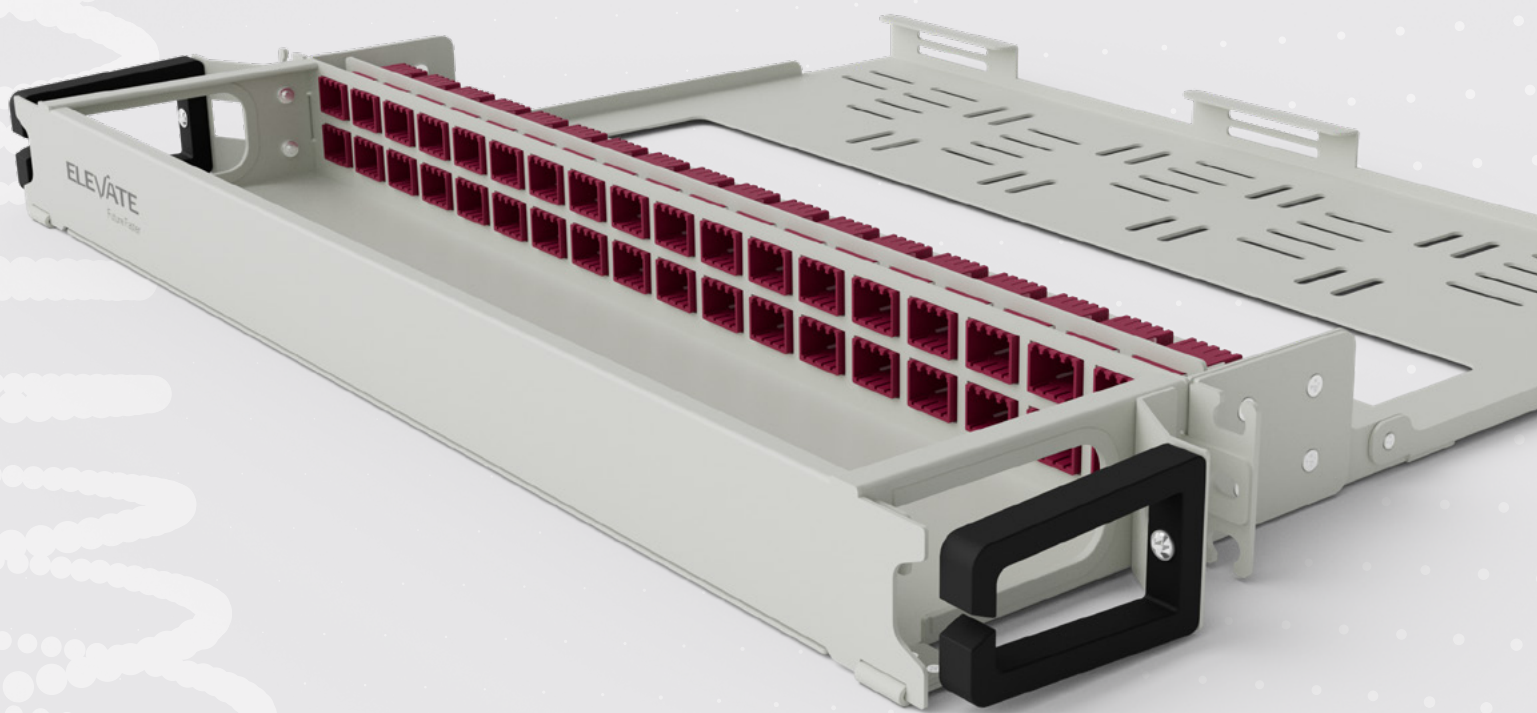
- ✓ Quick install mounting brackets, provides support while installing the patch panel



- ✓ Designated adaptor positions for recessed adaptors - 36 or 54 SN 8F adaptors per patch panel

Part Number Table

Part Number	Description
Singlemode: APC	
211-003	Elevate 36 Port APC Singlemode OS2 1U Fixed White Patch Panel with 36 x SN 8F Adaptors (288F) Green
211-003-BK	Elevate 36 Port APC Singlemode OS2 1U Fixed Black Patch Panel with 36 x SN 8F Adaptors (288F) Green
221-203	Elevate 54 Port APC Singlemode OS2 1U Fixed White Patch Panel with 54 x SN 8F Adaptors (432F) Green
221-203-BK	Elevate 54 Port APC Singlemode OS2 1U Fixed Black Patch Panel with 54 x SN 8F Adaptors (432F) Green
Singlemode: OS2	
211-001	Elevate 36 Port Singlemode OS2 1U Fixed White Patch Panel with 36 x SN 8F Adaptors (288F) Blue
211-001-BK	Elevate 36 Port Singlemode OS2 1U Fixed Black Patch Panel with 36 x SN 8F Adaptors (288F) Blue
221-201	Elevate 54 Port Singlemode OS2 1U Fixed White Patch Panel with 54 x SN 8F Adaptors (432F) Blue
221-201-BK	Elevate 54 Port Singlemode OS2 1U Fixed Black Patch Panel with 54 x SN 8F Adaptors (432F) Blue
Multimode: OM4	
211-002	Elevate 36 Port Multimode OM4 1U Fixed White Patch Panel with 36 x SN 8F Adaptors (288F) Violet
211-002-BK	Elevate 36 Port Multimode OM4 1U Fixed Black Patch Panel with 36 x SN 8F Adaptors (288F) Violet
221-202	Elevate 54 Port Multimode OM4 1U Fixed White Patch Panel with 54 x SN 8F Adaptors (432F) Violet
221-202-BK	Elevate 54 Port Multimode OM4 1U Fixed Black Patch Panel with 54 x SN 8F Adaptors (432F) Violet

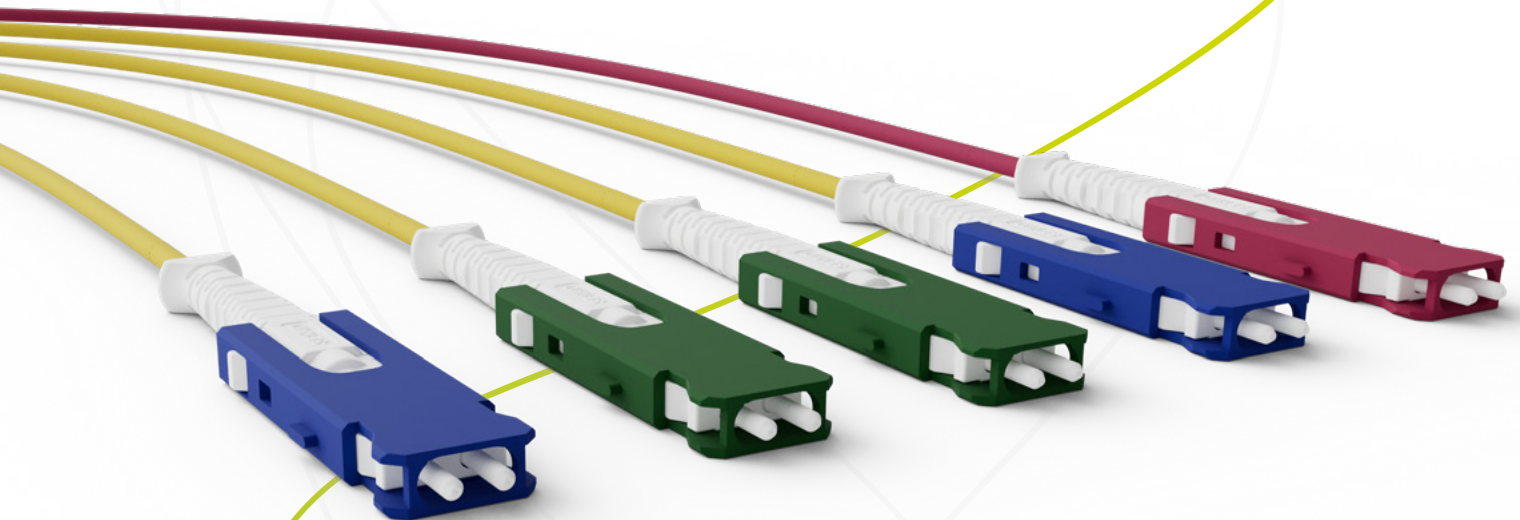


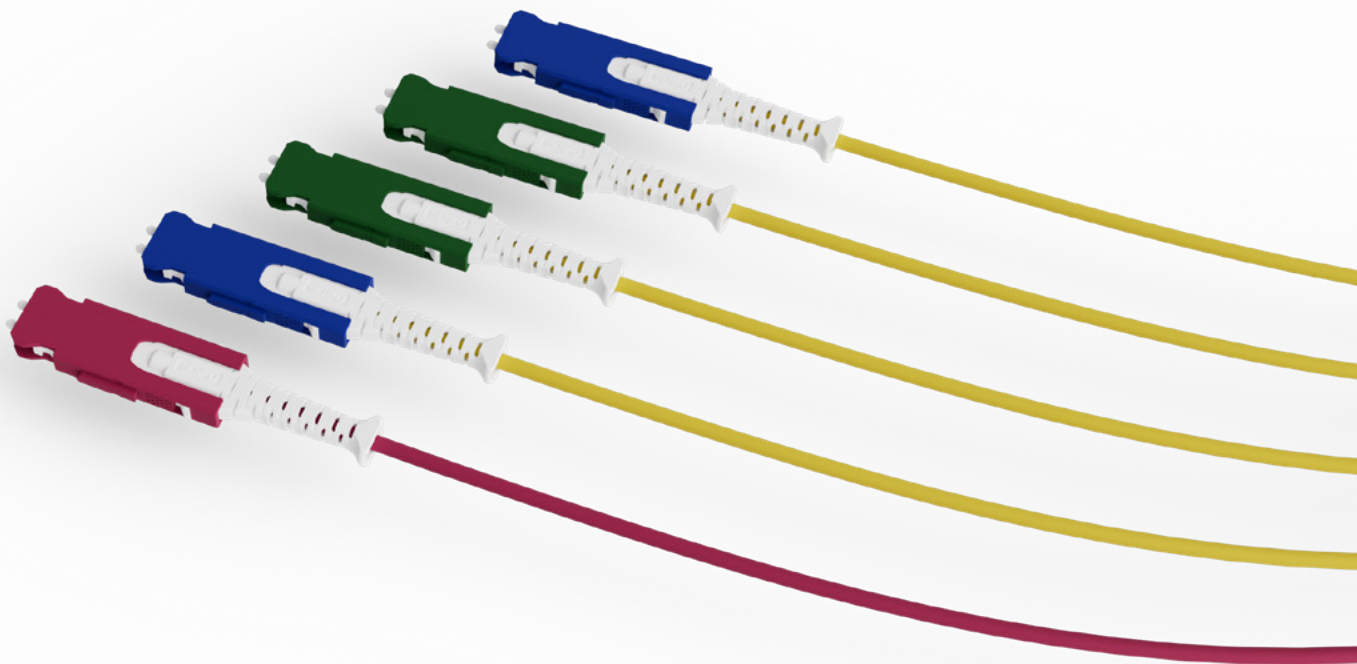
SN Patch Cords

The Elevate range of SN-to-SN cable assemblies form part of the wider MPO cassette and patching solution. As standard each cable is assembled using Senko low loss SN connectors and 2mm Round Duplex LSZH cable.

The SN range of assemblies provides a ferrule-based alternative to MPO, increases flexibility and reach, whilst lowering the total cost of ownership via its ability to offer a less complexed solution to the traditional solutions.

- ✓ Base-2 server consolidation
- ✓ Base-8 switch replication
- ✓ Telco exchanges
- ✓ Broadcast
- ✓ Enterprise network
- ✓ Finance data centres
- ✓ Backbone trunk cabling
- ✓ Low Loss Connectors
- ✓ 100% Optically Tested
- ✓ 2mm Duplex Round Cable
- ✓ Available in OS2/OM4





Part Number Table

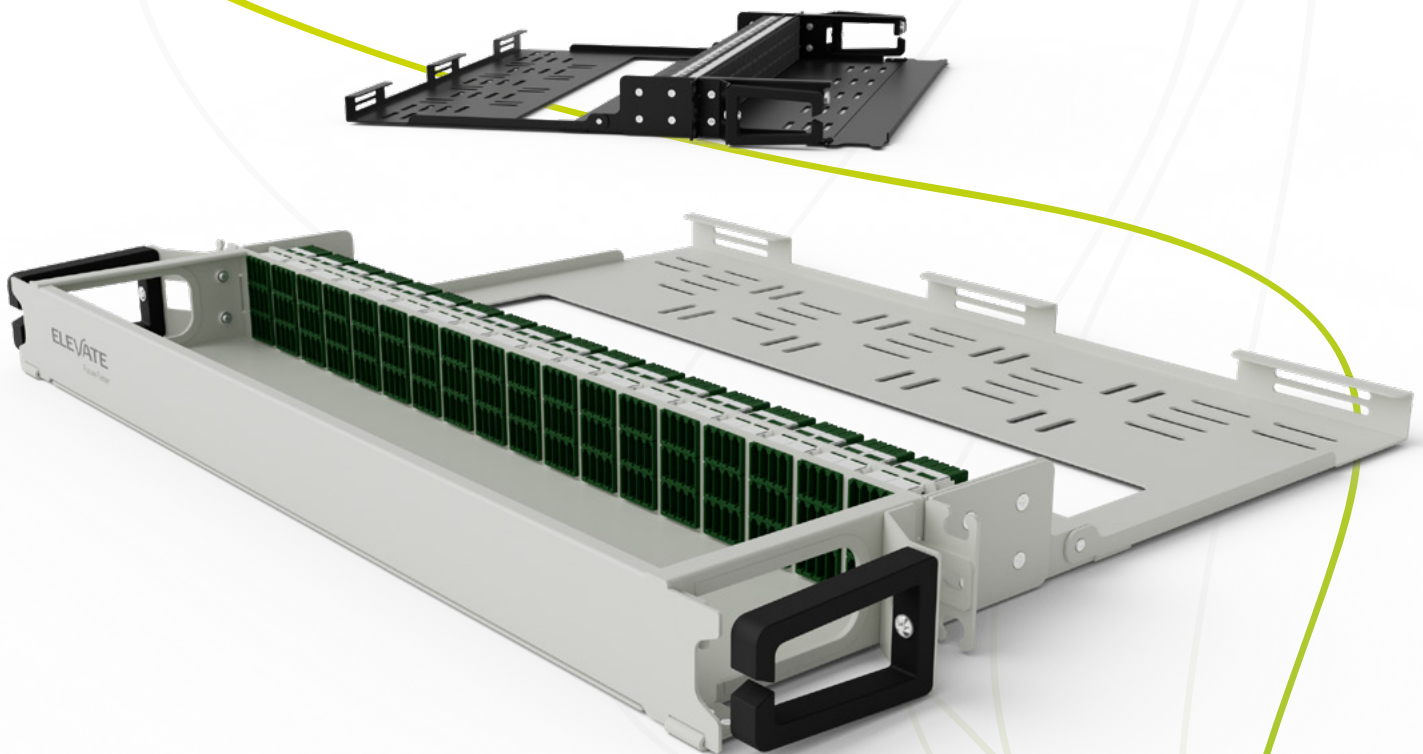
Part Number	Description	
		OS2
223-001	Elevate SNUPC-SNUPC 2.0mm G657A1 Round Duplex Patch Cord 1m Yellow	
223-002	Elevate SNUPC-SNUPC 2.0mm G657A1 Round Duplex Patch Cord 2m Yellow	
223-003	Elevate SNUPC-SNUPC 2.0mm G657A1 Round Duplex Patch Cord 3m Yellow	
223-005	Elevate SNUPC-SNUPC 2.0mm G657A1 Round Duplex Patch Cord 5m Yellow	
		OS2: APC to APC
223-101	Elevate SNAPC-SNAPC 2.0mm G657A1 Round Duplex Patch Cord 1m Yellow	
223-102	Elevate SNAPC-SNAPC 2.0mm G657A1 Round Duplex Patch Cord 2m Yellow	
223-103	Elevate SNAPC-SNAPC 2.0mm G657A1 Round Duplex Patch Cord 3m Yellow	
223-105	Elevate SNAPC-SNAPC 2.0mm G657A1 Round Duplex Patch Cord 5m Yellow	
		OS2: UPC to APC
223-201	Elevate SNUPC-SNAPC 2.0mm G657A1 Round Duplex Patch Cord 1m Yellow	
223-202	Elevate SNUPC-SNAPC 2.0mm G657A1 Round Duplex Patch Cord 2m Yellow	
223-203	Elevate SNUPC-SNAPC 2.0mm G657A1 Round Duplex Patch Cord 3m Yellow	
223-205	Elevate SNUPC-SNAPC 2.0mm G657A1 Round Duplex Patch Cord 5m Yellow	
		OM4
224-001	Elevate SNUPC-SNUPC 2.0mm OM4 Round Duplex Patch Cord 1m Violet	
224-002	Elevate SNUPC-SNUPC 2.0mm OM4 Round Duplex Patch Cord 2m Violet	
224-003	Elevate SNUPC-SNUPC 2.0mm OM4 Round Duplex Patch Cord 3m Violet	
224-005	Elevate SNUPC-SNUPC 2.0mm OM4 Round Duplex Patch Cord 5m Violet	

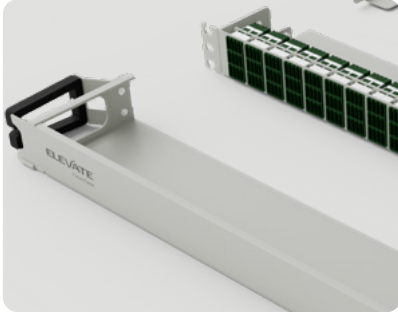
SN-MT Patch Panel

Designed for maximum density in modern networks, the Elevate VSFF patch panels utilize industry-leading SENKO SN-MT connectivity. These best-in-class panels offer superior fibre capacity within a single 1U rack space Up to 3456 fibres using SN-MT connectivity.

To ensure efficient installation and maintenance, these panels feature convenient additions, including Integrated front cable management for neat and easy routing and a hinged front cover with a dedicated area for clear labelling and identification.

- ✓ High-density patch panels
- ✓ Spine/Leaf architectures
- ✓ Switch replication
- ✓ Base-16 transition modules
- ✓ High-density cross-connects
- ✓ MUX and DEMUX equipment
- ✓ Opto-electronic equipment

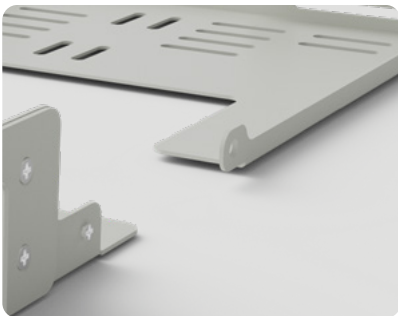




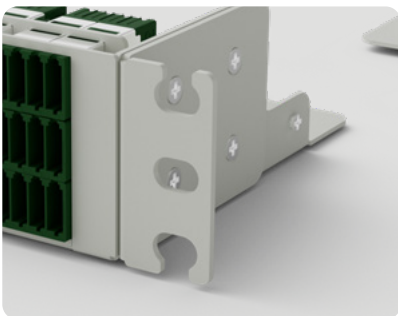
- ✓ Hinged front door - removable front management with labelling panel on inside face



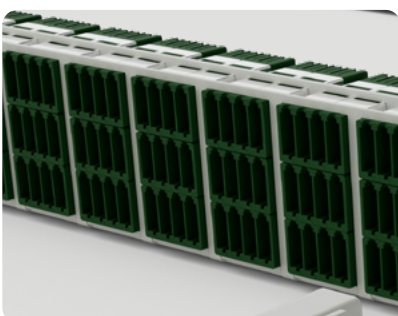
- ✓ Designated cable hoops to aid fibre management



- ✓ Removable hinged rear management, increased depth to accommodate larger trunk cables



- ✓ Quick install mounting brackets, provides support while installing the patch panel

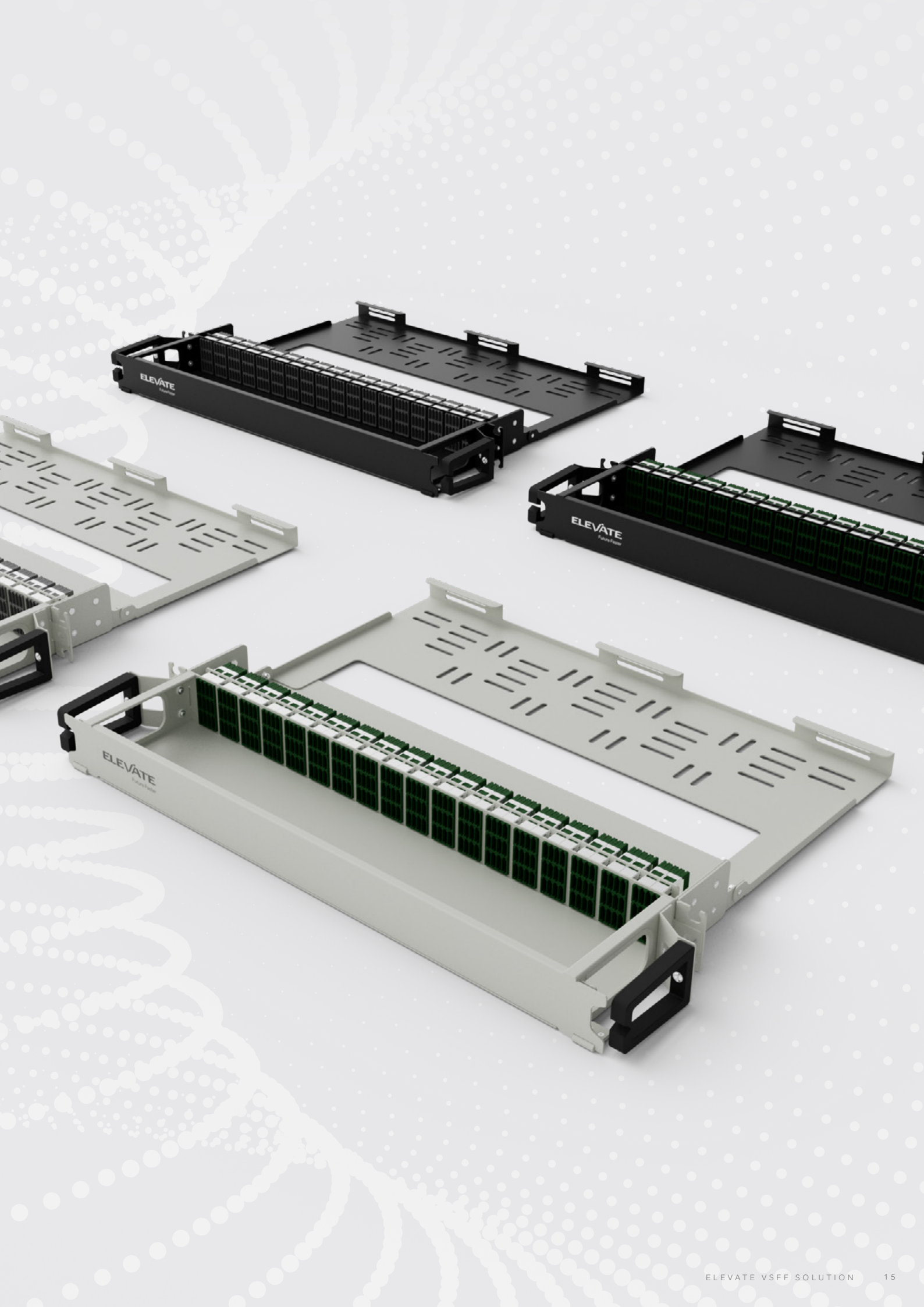


- ✓ Designated adaptor positions for recessed adaptors - up to 54 SNMT 16F adaptors per patch panel

Part Number Table

Part Number	Description
222-000	Elevate 54 Port APC Singlemode OS2 1U Fixed White Patch Panel with 54 x SNMT 16F Adaptors (3456 fibre) Green
222-000-BK	Elevate 54 Port APC Singlemode OS2 1U Fixed Black Patch Panel with 54 x SNMT 16F Adaptors (3456 fibre) Green
222-100	Elevate 54 Port Multimode 1U Fixed White Patch Panel with 54 x SNMT 16F Adaptors (3456 fibre) Black
222-100-BK	Elevate 54 Port Multimode 1U Fixed Black Patch Panel with 54 x SNMT 16F Adaptors (3456 fibre) Black

Our black SN-MT multimode adaptors are designed as true multi-fibre interfaces, ensuring full compatibility with OM3 and OM4 fibre types for seamless high-density connectivity.

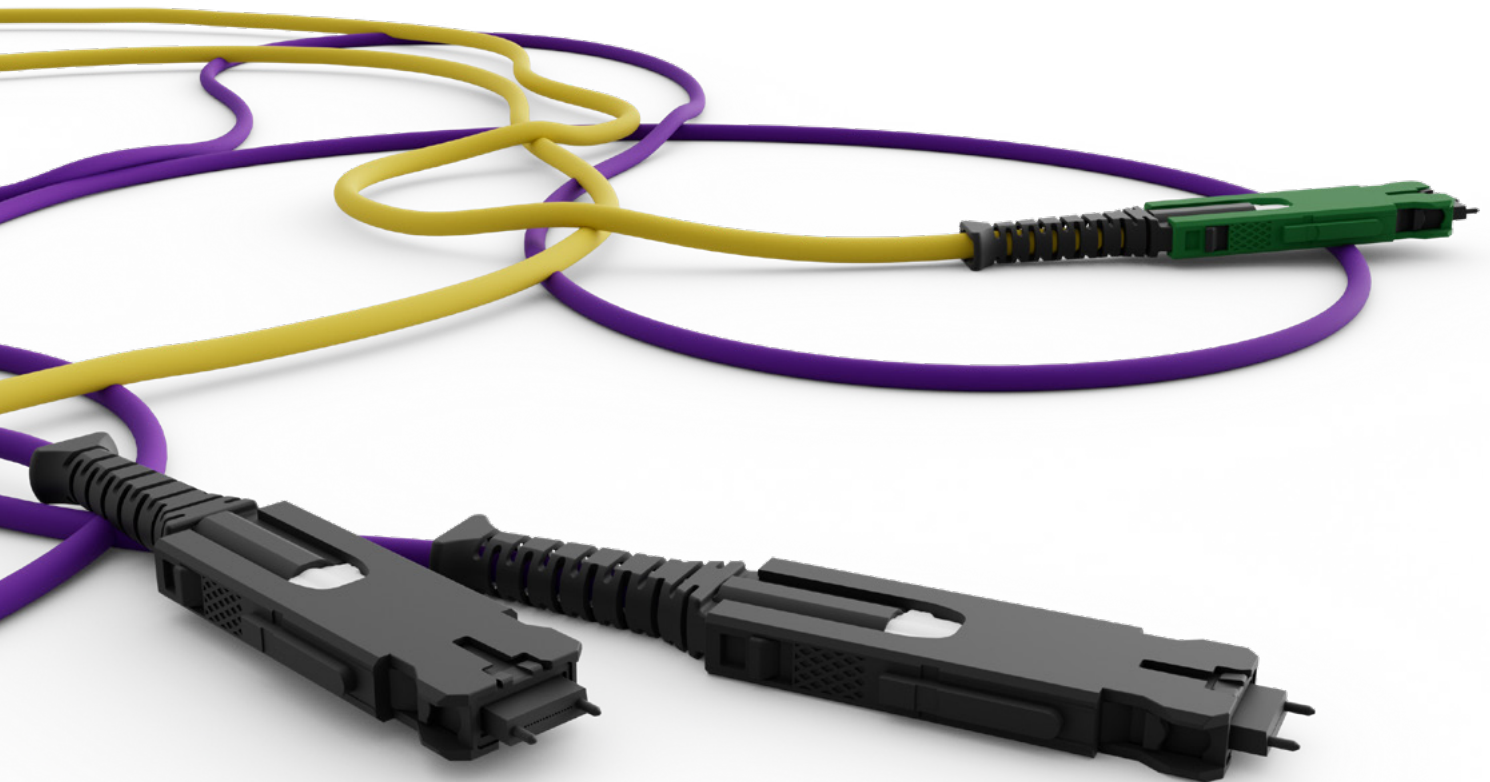


SN-MT Patch Cords

The Elevate range of SN-MT to SN-MT cable assemblies form part of the wider MPO cassette and patching solution. SN-MT 12 and SN-MT 16 is an extension of the SN. range and incorporates a single, compact SN.-MT ferrule with 12 x 250 µm fibres or 16 x 200 µm fibre in a single row.

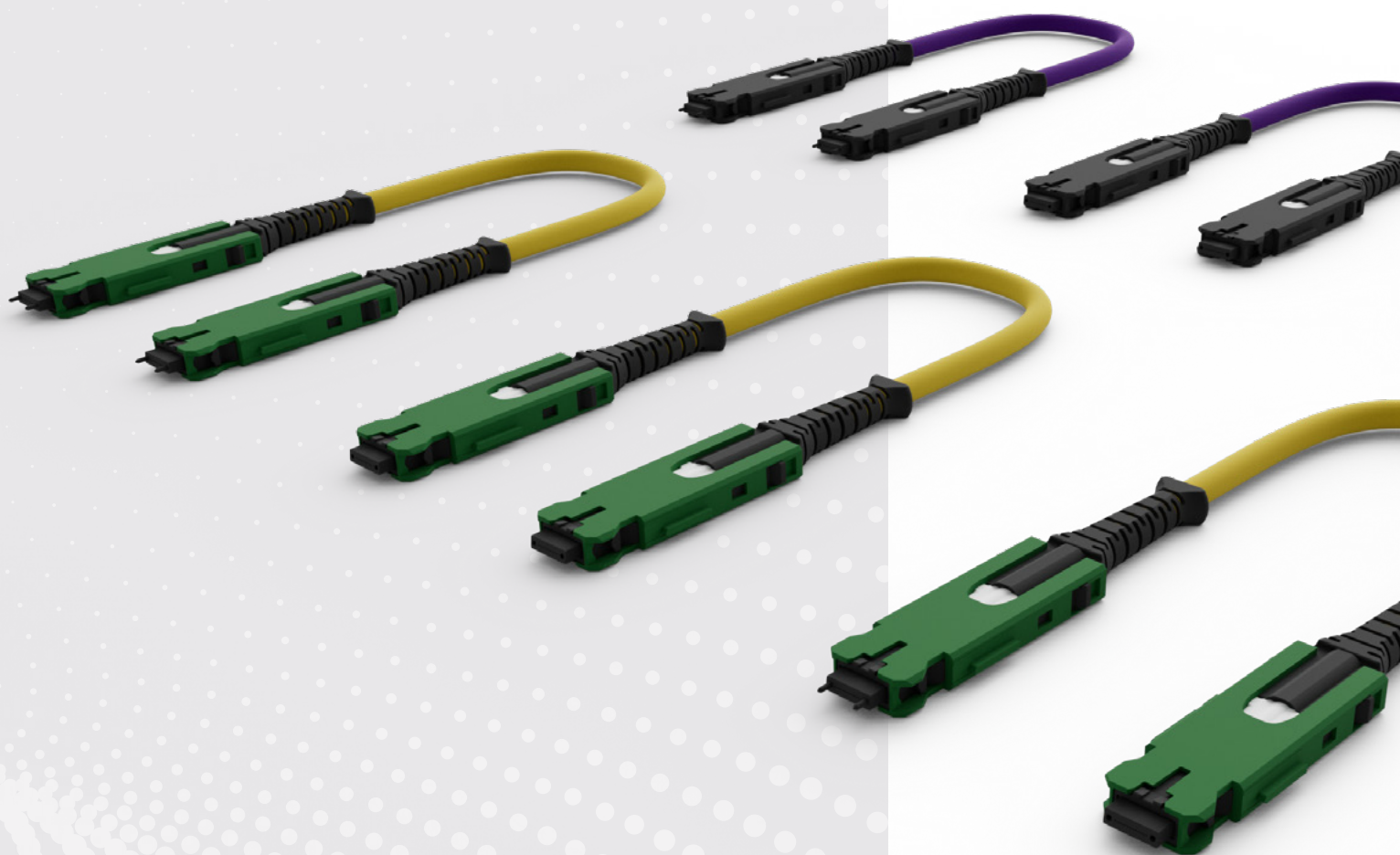
Subsequently, the SN-MT ferrule can achieve 2.7 times the density of standard MPO connections whilst leveraging the same proven alignment methods. This combination ensures low-loss performance for singlemode and multimode APC applications whilst delivering optimized patch-panel density required in today's Hyperscale data centres.

- ✓ High-density patch panels
- ✓ High-density, high-data rate switches
- ✓ AI and super-compute clusters
- ✓ QSFP-DD and OSFP transceiver links
- ✓ Hyperscale, edge, enterprise and colocation data centres



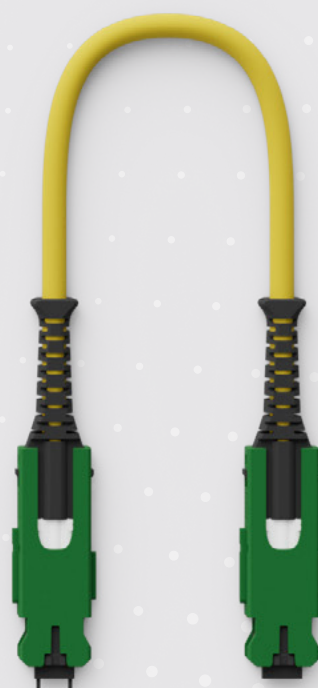
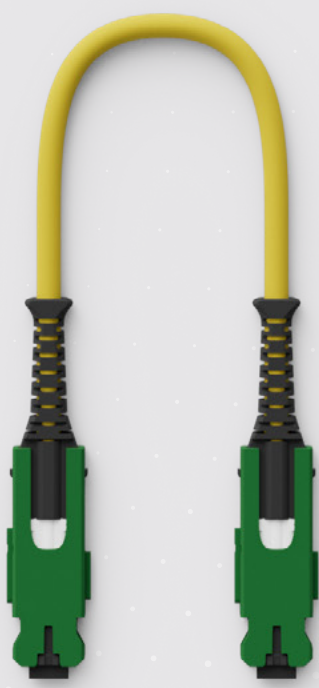
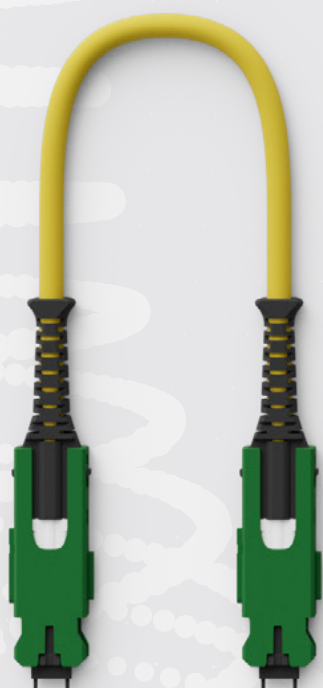
Key Features

- ✓ Low Loss Connectors
- ✓ 100% Optically Tested
- ✓ 2mm Duplex Round Cable
- ✓ Singlemode APC and Multimode



Part Number Table

Part Number	Description
12F	
325-001	Elevate SN-MT Male - SN-MT Male 12F APC 2.0mm Round Duplex Patch Cord 1m Yellow
325-002	Elevate SN-MT Male - SN-MT Male 12F APC 2.0mm Round Duplex Patch Cord 2m Yellow
325-003	Elevate SN-MT Male - SN-MT Male 12F APC 2.0mm Round Duplex Patch Cord 3m Yellow
325-005	Elevate SN-MT Male - SN-MT Male 12F APC 2.0mm Round Duplex Patch Cord 5m Yellow
325-201	Elevate SN-MT Female - SN-MT Female 12F APC 2.0mm Round Duplex Patch Cord 1m Yellow
325-202	Elevate SN-MT Female - SN-MT Female 12F APC 2.0mm Round Duplex Patch Cord 2m Yellow
325-203	Elevate SN-MT Female - SN-MT Female 12F APC 2.0mm Round Duplex Patch Cord 3m Yellow
325-205	Elevate SN-MT Female - SN-MT Female 12F APC 2.0mm Round Duplex Patch Cord 5m Yellow
325-401	Elevate SN-MT Male - SN-MT Female 12F APC 2.0mm Round Duplex Patch Cord 1m Yellow
325-402	Elevate SN-MT Male - SN-MT Female 12F APC 2.0mm Round Duplex Patch Cord 2m Yellow
325-403	Elevate SN-MT Male - SN-MT Female 12F APC 2.0mm Round Duplex Patch Cord 3m Yellow
325-405	Elevate SN-MT Male - SN-MT Female 12F APC 2.0mm Round Duplex Patch Cord 5m Yellow
16F	
324-001	Elevate SN-MT Male - SN-MT Male 16F APC 2.0mm Round Duplex Patch Cord 1m Yellow
324-002	Elevate SN-MT Male - SN-MT Male 16F APC 2.0mm Round Duplex Patch Cord 2m Yellow
324-003	Elevate SN-MT Male - SN-MT Male 16F APC 2.0mm Round Duplex Patch Cord 3m Yellow
324-005	Elevate SN-MT Male - SN-MT Male 16F APC 2.0mm Round Duplex Patch Cord 5m Yellow
324-201	Elevate SN-MT Female - SN-MT Female 16F APC 2.0mm Round Duplex Patch Cord 1m Yellow
324-202	Elevate SN-MT Female - SN-MT Female 16F APC 2.0mm Round Duplex Patch Cord 2m Yellow
324-203	Elevate SN-MT Female - SN-MT Female 16F APC 2.0mm Round Duplex Patch Cord 3m Yellow
324-205	Elevate SN-MT Female - SN-MT Female 16F APC 2.0mm Round Duplex Patch Cord 5m Yellow
324-401	Elevate SN-MT Male - SN-MT Female 16F APC 2.0mm Round Duplex Patch Cord 1m Yellow
324-402	Elevate SN-MT Male - SN-MT Female 16F APC 2.0mm Round Duplex Patch Cord 2m Yellow
324-403	Elevate SN-MT Male - SN-MT Female 16F APC 2.0mm Round Duplex Patch Cord 3m Yellow
324-405	Elevate SN-MT Male - SN-MT Female 16F APC 2.0mm Round Duplex Patch Cord 5m Yellow
Available in Multimode	



HD Cassettes

Elevate High Density VSFF Cassettes are part of the Elevate range designed for high-density fibre connectivity in data centres. These cassettes provide 16-32 fibre connectivity, utilising SN connectors at the front for patching and 8F MPO connectors at the rear for efficient connection to backbone cabling. It supports Multimode fibre and Singlemode APC, ensuring high performance for relevant applications. The cassette comes in Black and White.



Key Features

- ✓ High-density patch panels
- ✓ Spine/Leaf architectures
- ✓ Switch replication
- ✓ Opto-electronic equipment
- ✓ WDM equipment
- ✓ MUX and DEMUX equipment
- ✓ Mass server consolidation EoR, MoR
- ✓ 16 & 32 fibre connectivity
- ✓ SN external connectors
- ✓ MPO interior connectors
- ✓ Singlemode/Multimode Options
- ✓ ANSI A pin assignment
- ✓ Compatible with Elevate Base8 or Base16 High Density Chassis



Part Number Table

Part Number	Description
APC	
208-301	Elevate High Density APC 16F Loaded with SN 8F 4 Channel Adaptors Base8 Cassette White
208-301-BK	Elevate High Density APC 16F Loaded with SN 8F 4 Channel Adaptors Base8 Cassette Black
208-311	Elevate High Density APC 32F Loaded with SN 8F 4 Channel Adaptors Base8 Cassette White
208-311-BK	Elevate High Density APC 32F Loaded with SN 8F 4 Channel Adaptors Base8 Cassette Black
OS2	
208-300	Elevate High Density OS2 16F Loaded with SN 8F 4 Channel Adaptors Base8 Cassette White
208-300-BK	Elevate High Density OS2 16F Loaded with SN 8F 4 Channel Adaptors Base8 Cassette Black
208-310	Elevate High Density OS2 32F Loaded with SN 8F 4 Channel Adaptors Base8 Cassette White
208-310-BK	Elevate High Density OS2 32F Loaded with SN 8F 4 Channel Adaptors Base8 Cassette Black
OM4	
208-302	Elevate High Density OM4 16F Loaded with SN 8F 4 Channel Adaptors Base8 Cassette White
208-302-BK	Elevate High Density OM4 16F Loaded with SN 8F 4 Channel Adaptors Base8 Cassette Black
208-312	Elevate High Density OM4 32F Loaded with SN 8F 4 Channel Adaptors Base8 Cassette White
208-312-BK	Elevate High Density OM4 32F Loaded with SN 8F 4 Channel Adaptors Base8 Cassette Black



ELEVATE

Future Faster

elevate@excel-networking.com

elevate.excel-networking.com