

FAMILY BROCHURE

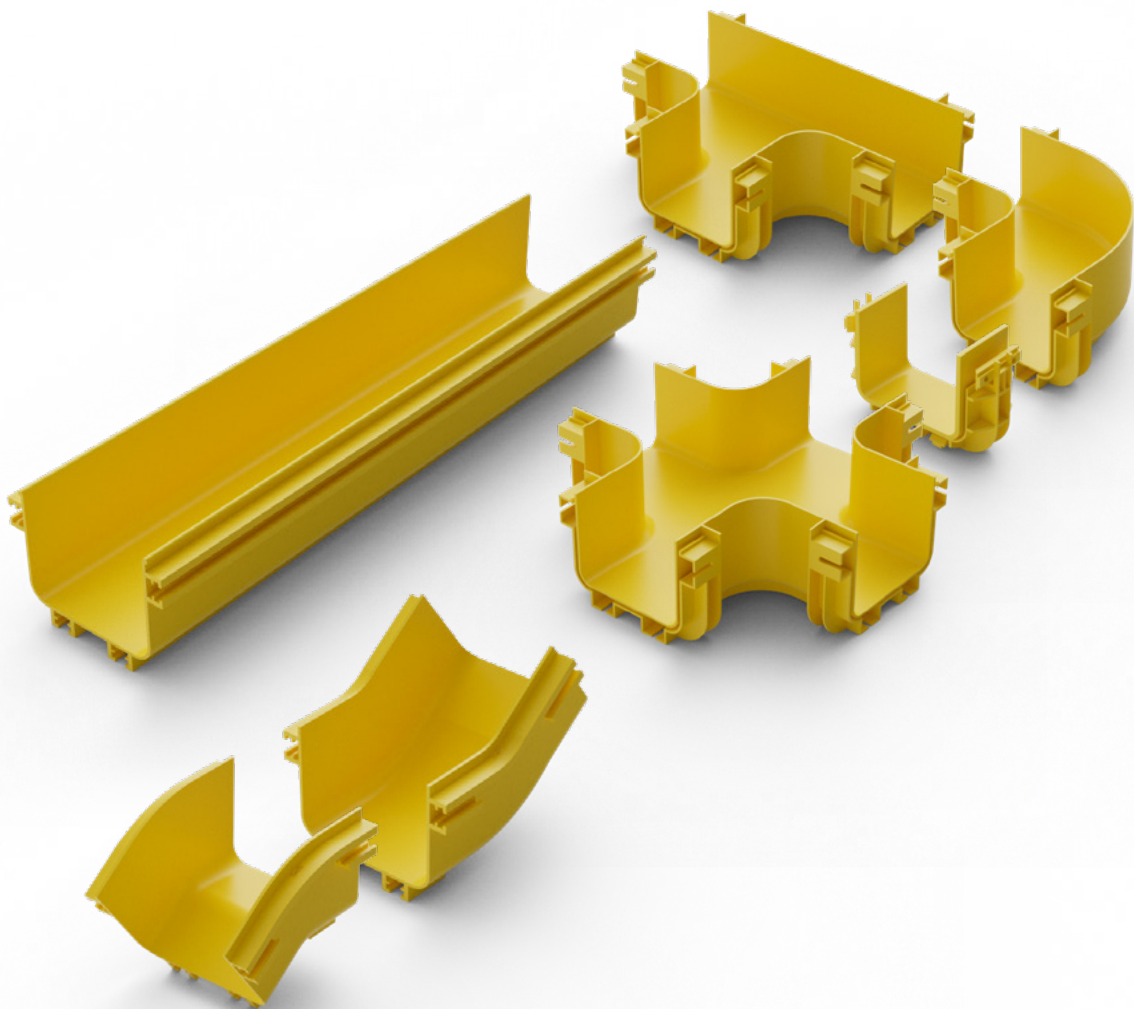
Fibre Duct System

Contents

Intro	3
Straight Duct Sections	6
Corner Duct Sections	8
Riser and Exit Duct Sections	10
Reducers	12
Accessories	14

Elevate Fibre Duct System

The Elevate fibre duct system is a modular range of straight trunking and associated accessories in a choice of sizes enabling a customized designs to suit all types and sizes of overhead cable routing environments. Manufactured from low smoke zero halogen materials, and designed to be installed quickly without specialist tools Elevate duct offers safe, fast, easy to use cable management for high density fibre optic cabling.



Elevate Fibre Duct System

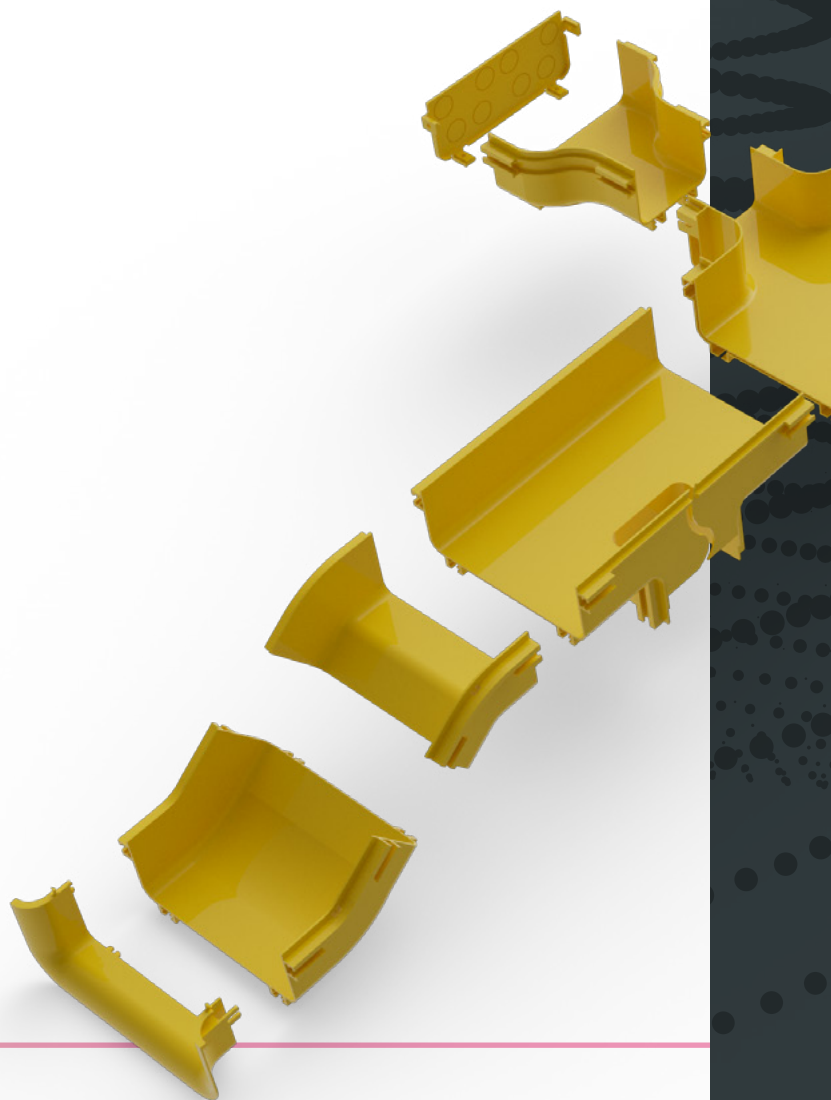
Careful management, routing and protection of fibre patching and trunk cabling within datacentres is essential. Delicate small diameter cables need to be separated from power and data cables for mechanical protection as well as requiring optimal routing and bend radii support to ensure reliable, high levels of performance. Elevate fibre duct systems address these needs by providing a modular, safe, highly flexible, fast to install solution.

Straight duct systems available in a range of sizes are the foundation of each design. Next choose from a series of accessories to create the routing and capacity required throughout the ducting system the options include a range of bends, end caps and exit sections. A simple connector chosen to match the width of duct acts as the joint between sections of straight duct or to add an accessory to a straight section.

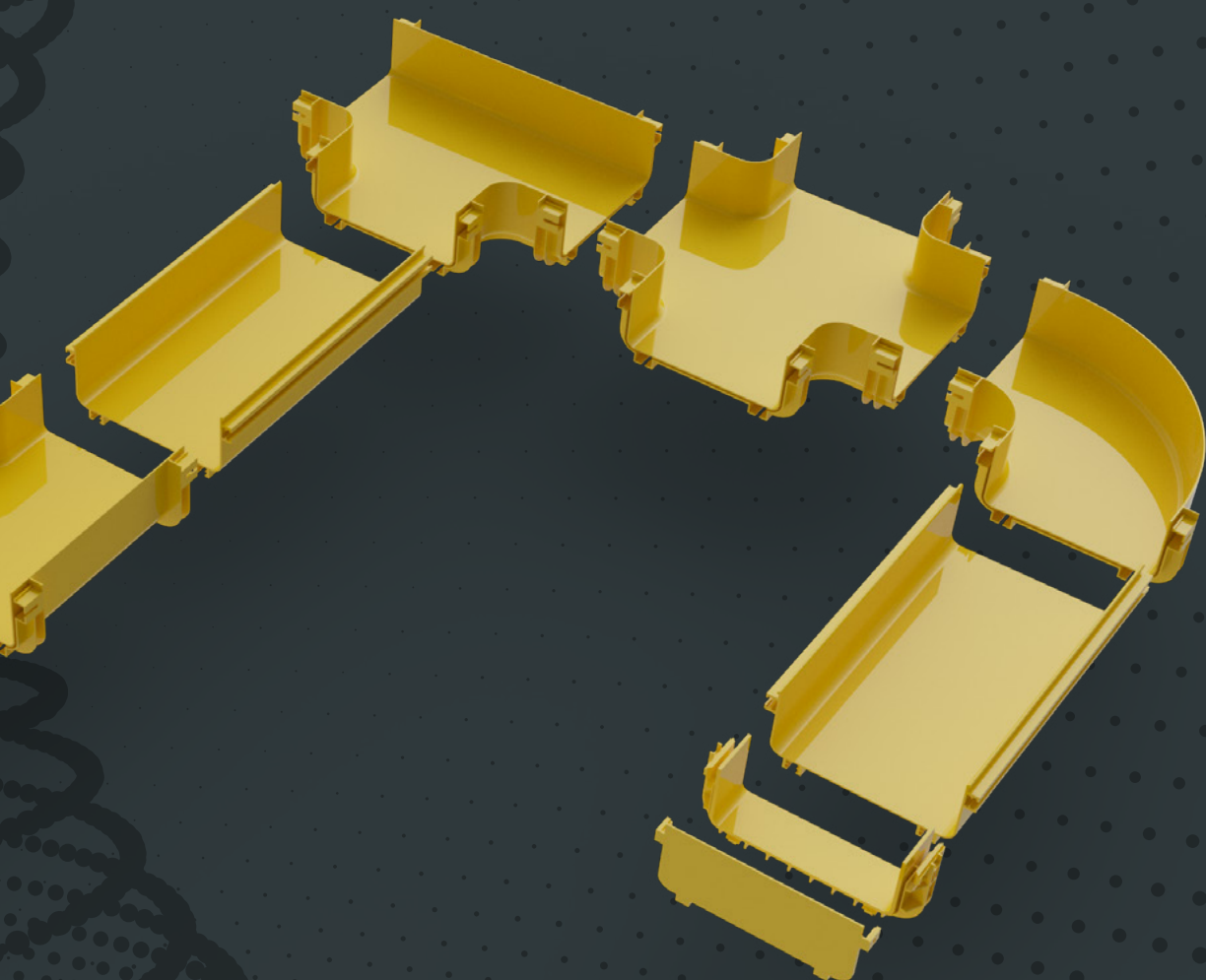
Manufactured from flame-retardant ABS material, the duct system meets LSZH (Low Smoke Zero Halogen) and UL94V-0 standards, further enhancing the protection of the cables and ensuring safety in case of fire.

Elevate's fibre duct system is also designed for ease of assembly. The only tool required is a saw to cut the channels to the desired length. This design prioritizes speed of installation and minimizes time for the installer, making it a highly efficient solution.

Moreover, the system's adaptability ensures it can evolve to meet the demands of the market. Currently available in widths ranging from 100mm to 600mm, it offers versatility to accommodate various installation requirements.



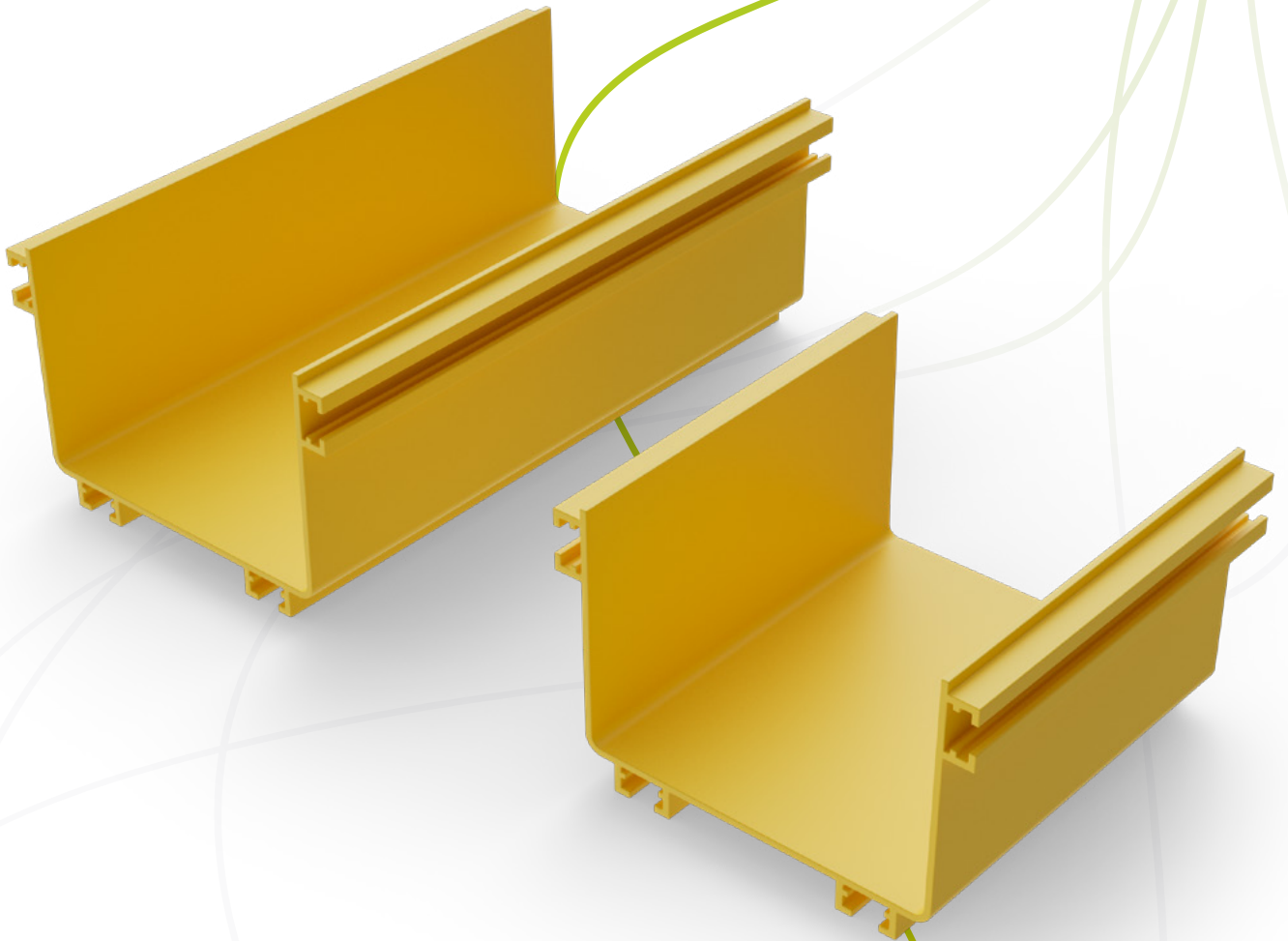
The Elevate fibre duct system stands out for its flexibility, ease of installation, robust protection, and adaptability.



Straight Duct Sections

Straight duct sections are supplied in 2 metre lengths, each with a standard depth of 100mm, various fibre cable densities can be housed by choosing from a range of duct widths, it is recommended to allow for further expansion when designing systems.

Optional snap on covers are available to enclose installed cabling.

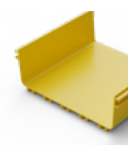
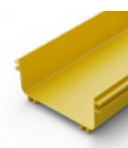
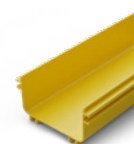
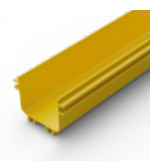


Fibre Loading Capacity

Duct Width	2mm Fibre			3mm Fibre		
	50% Capacity	75% Capacity	100% Capacity	50% Capacity	75% Capacity	100% Capacity
100mm	875	1315	1820	1170	1755	2428
150mm	1755	2960	3945	1313	3945	5265
240mm	1910	2866	3821	849	1273	1698
300mm	2370	3556	5136	1055	1578	2106
360mm	2940	4409	6369	1308	1957	2611
600mm	4740	7112	10272	2110	3156	4212

Part Number Table

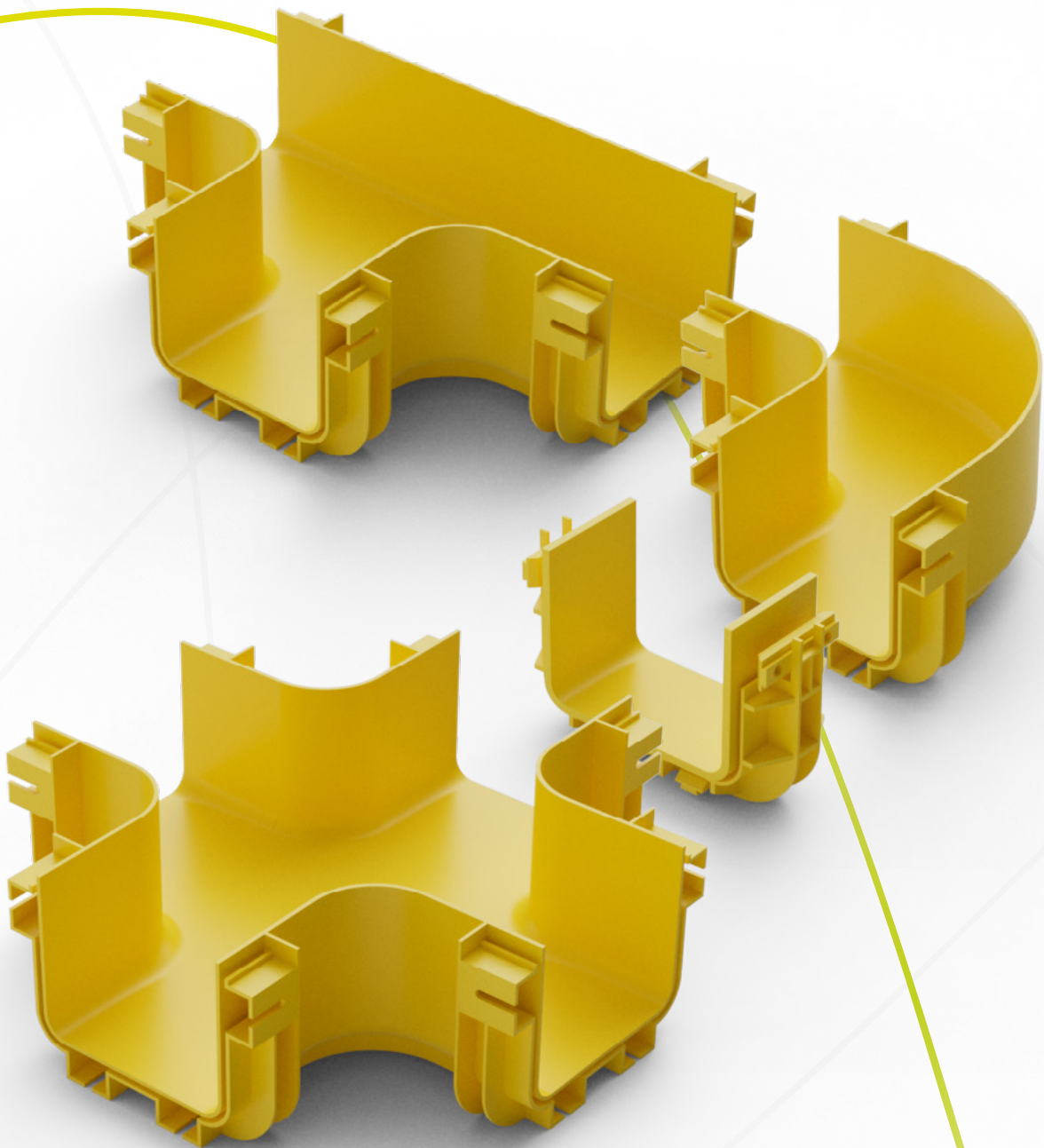
Part Number	Description
Elevate 100mm Fibre Duct Straight	
460-100-LSZH	100mm x 2000mm Straight Duct LSZH
460-100-CVR	Elevate Straight Cover
Elevate 150mm Fibre Duct Straight	
460-150-LSZH	150mm x 2000mm Straight Duct LSZH
460-150-CVR	Elevate Straight Cover
Elevate 240mm Fibre Duct Straight	
460-240-LSZH	240mm x 2000mm Straight Duct LSZH
460-240-CVR	Elevate Straight Cover
Elevate 300mm Fibre Duct Straight	
460-300-LSZH	300mm x 2000mm Straight Duct LSZH
460-300-CVR	Elevate Straight Cover
Elevate 360mm Fibre Duct Straight	
460-360-LSZH	360mm x 2000mm Straight Duct LSZH
460-360-CVR	Elevate Straight Cover
Elevate 600mm Fibre Duct Straight	
460-600-LSZH	600mm x 2000mm Straight Duct LSZH
460-600-CVR	Elevate Straight Cover




Corner Duct Sections

A wide range of tees, elbow corners and cross sections are available to complement the straight duct providing a highly flexible, modular approach to system design.

Each of these accessories requires a connector at each joining point whether this is to a straight duct, or another accessory. As with the duct sections optional snap on covers are available to enclose installed cabling



Part Number Table



Part Number	Description
Elevate Connector	
460-100-CNT	100mm Connector
460-150-CNT	150mm Connector
460-240-CNT	240mm Connector
460-300-CNT	300mm Connector
460-360-CNT	360mm Connector
460-600-CNT	600mm Connector



Elevate 90° Elbow	
460-100-ELB90	100mm 90° Elbow
460-150-ELB90	150mm 90° Elbow
460-240-ELB90	240mm 90° Elbow
460-300-ELB90	300mm 90° Elbow
460-360-ELB90	360mm 90° Elbow
460-600-ELB90	600mm 90° Elbow




Elevate 90° Elbow Cover	
460-100-ELB90-CVR	100mm 90° Elbow Cover
460-150-ELB90-CVR	150mm 90° Elbow Cover
460-240-ELB90-CVR	240mm 90° Elbow Cover
460-300-ELB90-CVR	300mm 90° Elbow Cover
460-360-ELB90-CVR	360mm 90° Elbow Cover
460-600-ELB90-CVR	600mm 90° Elbow Cover




Elevate TEE	
460-100-TEE	100mm TEE
460-150-TEE	150mm TEE
460-240-TEE	240mm TEE
460-300-TEE	300mm TEE
460-360-TEE	360mm TEE
460-600-TEE	600mm TEE



Part Number	Description
Elevate TEE Cover	
460-100-TEE-CVR	100mm TEE Cover
460-150-TEE-CVR	150mm TEE Cover
460-240-TEE-CVR	240mm TEE Cover
460-300-TEE-CVR	300mm TEE Cover
460-360-TEE-CVR	360mm TEE Cover
460-600-TEE-CVR	600mm TEE Cover



Elevate Cross	
460-100-Cross	100mm Cross
460-150-Cross	150mm Cross
460-240-Cross	240mm Cross
460-300-Cross	300mm Cross
460-360-Cross	360mm Cross
460-600-Cross	600mm Cross

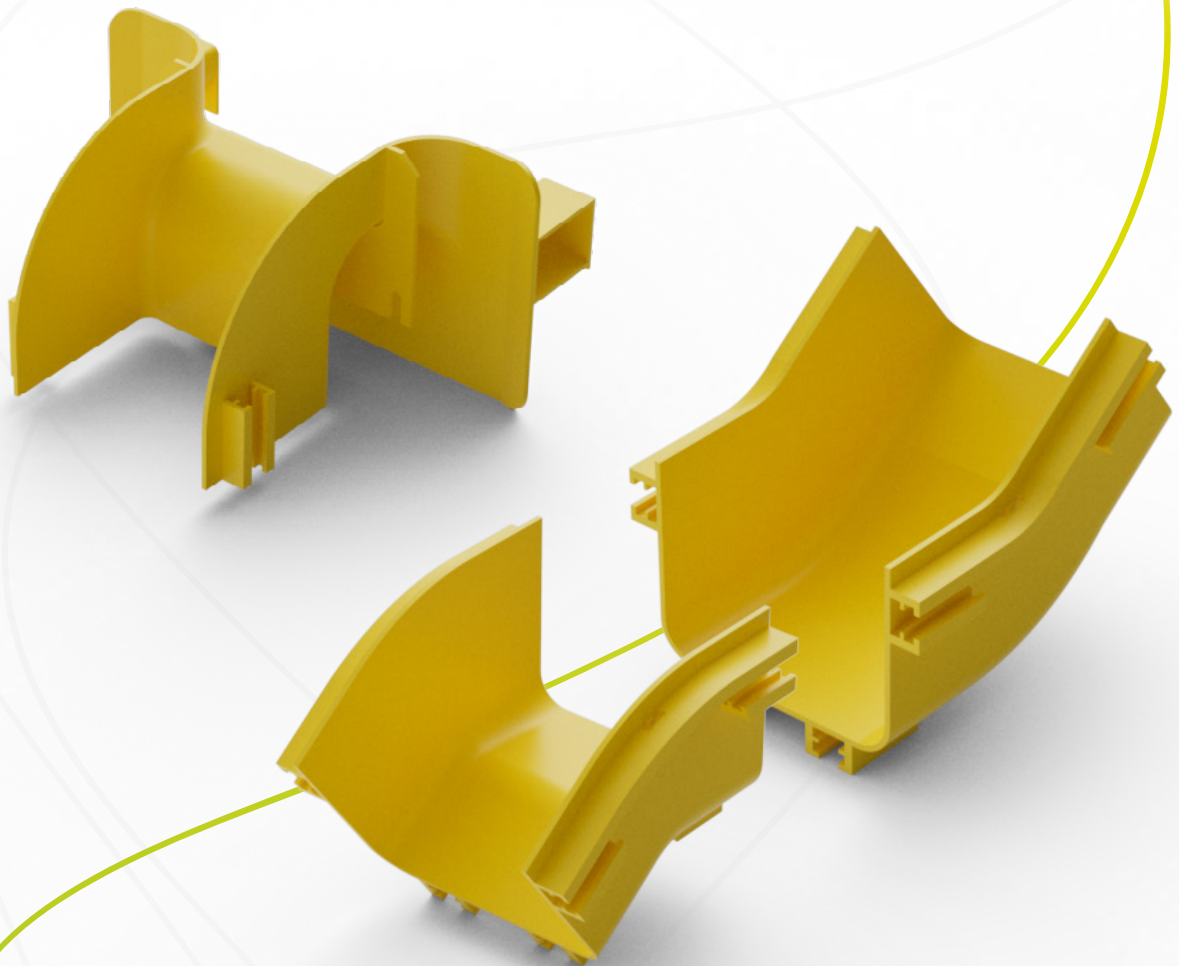


Elevate Cross Cover	
460-100-CRS-CVR	100mm Cross Cover
460-150-CRS-CVR	150mm Cross Cover
460-240-CRS-CVR	240mm Cross Cover
460-300-CRS-CVR	300mm Cross Cover
460-360-CRS-CVR	360mm Cross Cover
460-600-CRS-CVR	600mm Cross Cover

Riser and Exit Duct Sections

Internal and external riser accessories, available with or without covers, act as the joint and routing section in systems where lengths of ducting are installed at different heights.

A choice of exit kit is offered to suit low density cable volumes via a flexible conduit assembly or larger volumes via a waterfall style design, each of these accessories fit to any size of straight duct by clipping on to the duct side wall.



Part Number Table

Part Number	Description
Elevate Internal Riser 45°	
460-100-IRS45	100mm Internal Riser 45°
460-150-IRS45	150mm Internal Riser 45°
460-240-IRS45	240mm Internal Riser 45°
460-300-IRS45	300mm Internal Riser 45°
460-360-IRS45	360mm Internal Riser 45°
460-600-IRS45	600mm Internal Riser 45°

Elevate Internal Riser 45°Cover	
460-100-IRS45-CVR	100mm Internal Riser 45° Cover
460-150-IRS45-CVR	150mm Internal Riser 45° Cover
460-240-IRS45-CVR	240mm Internal Riser 45° Cover
460-300-IRS45-CVR	300mm Internal Riser 45° Cover
460-360-IRS45-CVR	360mm Internal Riser 45° Cover
460-600-IRS45-CVR	600mm Internal Riser 45° Cover

Elevate External Riser 45°	
460-100-ERS45	100mm External Riser 45°
460-150-ERS45	150mm External Riser 45°
460-240-ERS45	240mm External Riser 45°
460-300-ERS45	300mm External Riser 45°
460-360-ERS45	360mm External Riser 45°
460-600-ERS45	600mm External Riser 45°

Part Number	Description
Elevate External Riser 45°Cover	
460-100-ERS45-CVR	100mm External Riser 45° Cover
460-150-ERS45-CVR	150mm External Riser 45° Cover
460-240-ERS45-CVR	240mm External Riser 45° Cover
460-300-ERS45-CVR	300mm External Riser 45° Cover
460-360-ERS45-CVR	360mm External Riser 45° Cover
460-600-ERS45-CVR	600mm External Riser 45° Cover

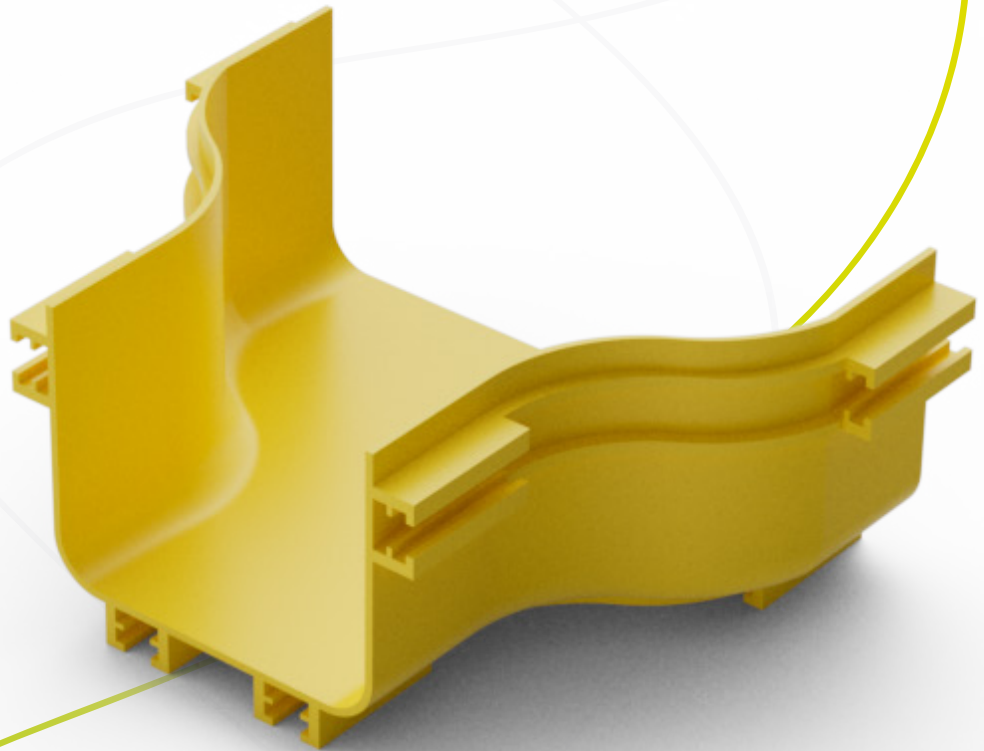
Elevate Universal Exit Kit with Flexible Tube	
460-OUT55	Universal Exit Kit with Flexible Tube

Elevate Universal Exit Kit 100mm Duct	
460-OUT-100	Universal Exit Kit 100mm Duct

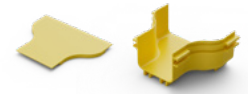
Elevate Bend Radius Trumpet End	
460-100-TSP	100mm Bend Radius Trumpet End
460-150-TSP	150mm Bend Radius Trumpet End
460-240-TSP	240mm Bend Radius Trumpet End
460-300-TSP	300mm Bend Radius Trumpet End
460-360-TSP	360mm Bend Radius Trumpet End
460-600-TSP	600mm Bend Radius Trumpet End

Reducers

Reducers are used to transition between different sizes of Fibre Duct Trunking, ensuring a secure and controlled change in capacity. They maintain airflow and protection while adapting the system layout, helping overcome space constraints or allowing gradual scaling.



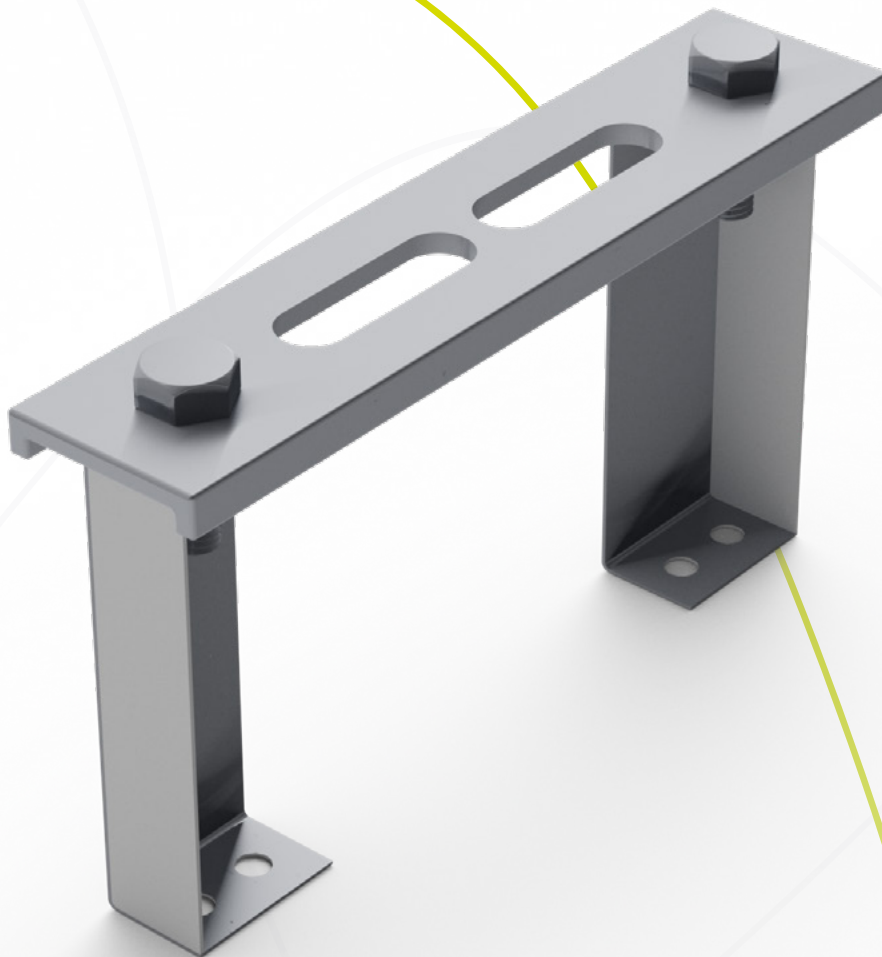
Part Number Table



Part Number	Description
Elevate Fibre Duct Horizontal Tee Reducer	
460-600-TEE-300	Elevate Fibre Duct 600 to 300mm Horizontal TEE LS0H
460-600-TEE-300-CVR	Elevate Fibre Duct 600mm Horizontal TEE Cover LS0H
Elevate Fibre Duct Reducer Connectors	
460-600-RDC-300	Elevate Fibre Duct 600-300 Reducer Connector
460-600-RDC-360	Elevate Fibre Duct 600-360 Reducer Connector
460-300-RDC-240	Elevate Fibre Duct 300-240 Reducer Connector
460-300-RDC-150	Elevate Fibre Duct 300-150 Reducer Connector
460-150-RDC-100	Elevate Fibre Duct 150-100 Reducer Connector
460-600-RDC-300-CVR	Elevate Fibre Duct 600-300 Reducer Connector Cover
460-600-RDC-360-CVR	Elevate Fibre Duct 600-360 Reducer Connector Cover
460-300-RDC-240-CVR	Elevate Fibre Duct 300-240 Reducer Connector Cover
460-300-RDC-150-CVR	Elevate Fibre Duct 300-150 Reducer Connector Cover
460-150-RDC-100-CVR	Elevate Fibre Duct 150-100 Reducer Connector Cover

Accessories

To complete each system design end caps, and a range of support accessories are available, also shown are the Elevate X bolt, a simple tool free fixing used when securing the connector to each length of duct or accessory.



Part Number Table

Part Number	Description
Elevate End Cap	
460-100-TTR	100mm End Cap
460-150-TTR	150mm End Cap
460-240-TTR	240mm End Cap
460-300-TTR	300mm End Cap



Elevate X-Bolt	
460-XBOLT	X-Bolt (single) Pack of 100
460-XBOLT-SET	X-Bolt Set (Nut and bolt) Pack of 100
460-XBOLT-XL	Elevate Fibre Duct long bolt for Strut Clip Black



Elevate Hanging Bar	
460-100-BAR	100mm Hanging Bar
460-150-BAR	150mm Hanging Bar
460-240-BAR	240mm Hanging Bar
460-300-BAR	300mm Hanging Bar



Elevate L Type Support	
460-L100	100mm L Type Support
460-L150	150mm L Type Support
460-L240	240mm L Type Support
460-L300	300mm L Type Support



Part Number	Description
Elevate Cabinet Top Stand	
460-100-EPS	100mm Cabinet Top Stand
460-150-EPS	150mm Cabinet Top Stand
460-240-EPS	240mm Cabinet Top Stand
460-300-EPS	300mm Cabinet Top Stand



Elevate Side Hanging Set	
460-100-HGS	100mm Side Hanging Set
460-150-HGS	150mm Side Hanging Set
460-240-HGS	240mm Side Hanging Set
460-300-HGS	300mm Side Hanging Set



Elevate Flex Tube Attachments	
460-OUT55	Elevate Fibre Duct 50 mm Flex Tube Attachment



ELEVATE

Future Faster

elevate@excel-networking.com

elevate.excel-networking.com