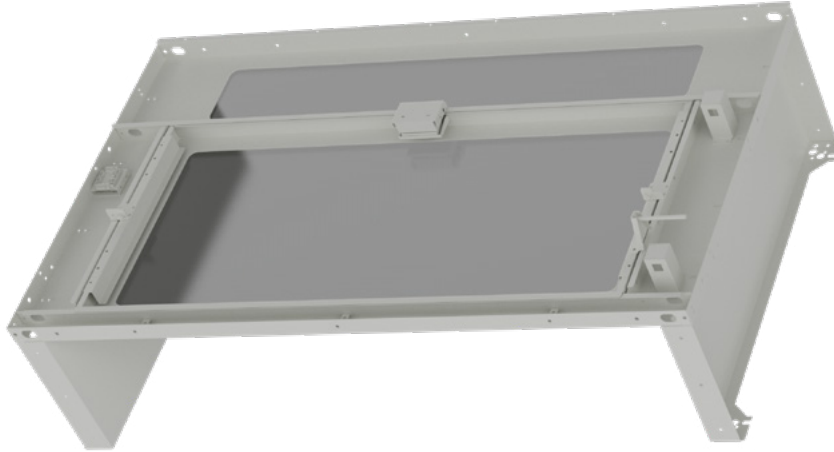


Elevate Aisle Containment

Active Skylights Automatic Reset (With Rod Kits)



Product Overview

The Elevate Cold Aisle Active Opening Roof Skylight is designed to enhance modular containment cold aisle systems, providing an effective solution for maintaining optimal airflow and temperature control in Data centres. Featuring a standardized design for quick, efficient on-site assembly, this skylight offers a clear rotating glass roof opening as needed.

Typically installed in the main centre area of the containment, the active opening skylight supports the seamless integration of various equipment such as temperature and humidity sensors, smoke detectors, video surveillance cameras, and other critical monitoring systems.

These can be connected to the Automatic Skylights to make them powered and come with Rod Kits to connect up to 7 of these skylights to one with a motor.

Available in 600mm and 800mm width variants, the skylight is designed to fit a 1200mm cold aisle corridor as standard. It also includes LED lighting for added visibility and safety, with 5mm thick tempered glass that ensures durability and security.

The active opening feature is automatically triggered by smoke detection, providing a crucial safety function in the event of an emergency. The skylight features automatic reset powered by connected skylight with motor offering both safety and operational flexibility in a dynamic data centre environment.

- ✓ Available in 600mm or 800mm wide versions
- ✓ Standard option at 1260mm for 1200mm Aisle
- ✓ Tempered glass panels for maximum light within aisle
- ✓ Rotating glass coupled with smoke detection for centre aisle use.
- ✓ Includes integrated LED Lighting
- ✓ Available in black and White finish

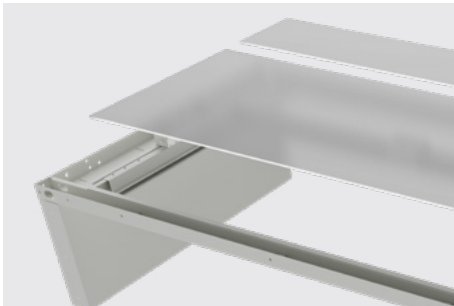
Product Specifications

Feature	Values
Width	600mm (for 600mm wide cabinets)/800mm (for 800mm wide cabinets)
Depth	1260mm (for 1200mm wide aisle)
Support Plate	300mm high support plate, steel
Opening Angle	90
Glass Thickness	5mm
Opening Mode	Single
Glass Transmittance Ratio	0.9
LED	DC24V, 100Lux
Infrared Induction	DC24V, sensing distance of 3-5m, delay time of 35-40s
Electromagnetic Lock	DC24V, 200mA, pulling force 60kg
Type of Finish	Powder coated
Colour	White/Black
RAL-number	9003 (White), 9004 (Black)

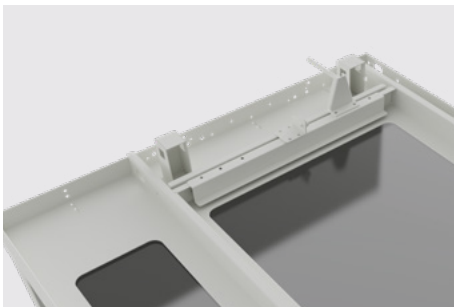
Product Features Explained



Each Skylight components comes with Integrated 24V LED lighting that connects back to the main Controller.

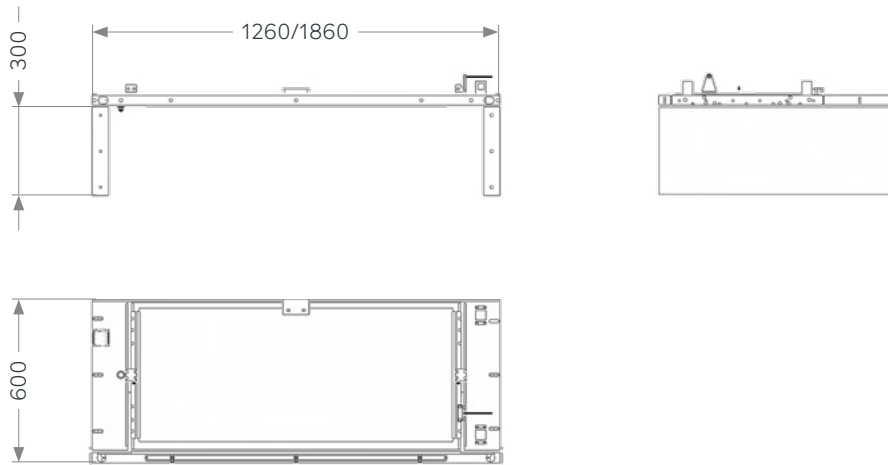


5mm Glass installed for providing clear daylight and safety of the unit.

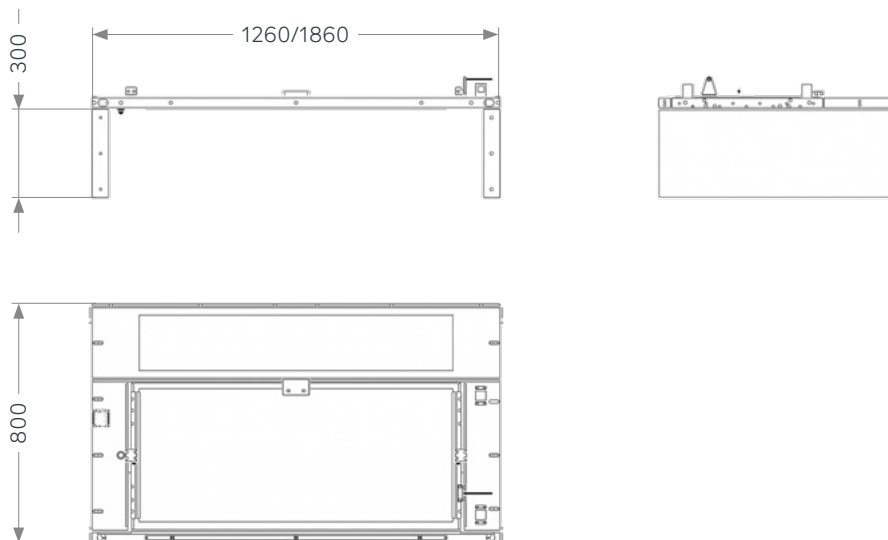


Active Mechanism that allows the Skylight to flip open when smoke is detected, skylights are all connected together to ensure all are opened at the same time. They can also be connected to Automatic Skylights via connecting rods.

Product Drawing - 600mm Roof Type



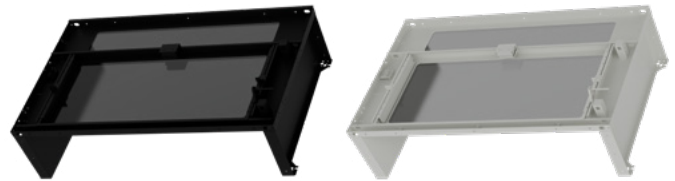
Product Drawing - 800mm Roof Type



Product Standards

Applicable standard	Description
Directive 2008/98/EC (WFD)	Waste Framework Directive — compliant. Implemented in the UK through the Waste (England and Wales) Regulations 2011 (SI 2011 No. 988).
ECHA SCIP Database	Compliant; product does not contain SVHCs (Substances of Very High Concern) as defined under REACH Article 33(1). Submission obligations met under EU REACH and UK REACH.
Regulation (EU) 2019/1021 (POPs)	EU Regulation on Persistent Organic Pollutants — compliant. For Great Britain, compliance is aligned with the Persistent Organic Pollutants (Amendment) (EU Exit) Regulations 2020 (SI 2020 No. 1355).
Directive 2011/65/EU (RoHS II)	Restriction of the Use of Certain Hazardous Substances in Electrical and Electronic Equipment — compliant. Applies within EU member states.
Directive (EU) 2015/863 (RoHS III)	Amending Directive 2011/65/EU to add four phthalates (DEHP, BBP, DBP, DIBP) to Annex II — compliant.
UK SI 2012 No. 3032	The Restriction of the Use of Certain Hazardous Substances in Electrical and Electronic Equipment Regulations 2012 (UK RoHS) — compliant for Great Britain. Retained EU law, as amended by the Product Safety and Metrology (Amendment etc.) (EU Exit) Regulations 2019.

Part Number Table



Part Number	Description
572-7612SAR-BK	Elevate Active Single Roof Skylight Automatic Reset (with Rod Kit) 600W x 1200D, Tempered Glass Black
572-7812SAR-BK	Elevate Active Single Roof Skylight Automatic Reset (with Rod Kit) 800W x 1200D, Tempered Glass Black
572-7612SAR-WH	Elevate Active Single Roof Skylight Automatic Reset (with Rod Kit) 600W x 1200D, Tempered Glass White
572-7812SAR-WH	Elevate Active Single Roof Skylight Automatic Reset (with Rod Kit) 800W x 1200D, Tempered Glass White

Must be connected to Active Skylight with Motor part code 572-##12SAM-##