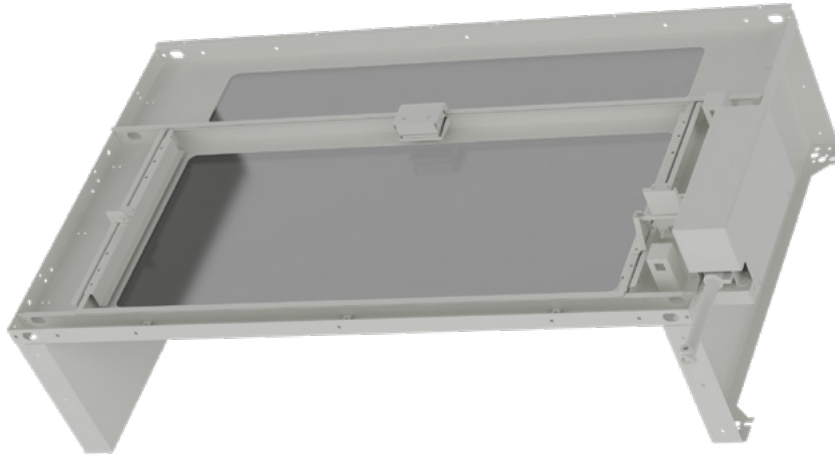


# Elevate Aisle Containment

## Active Skylights Automatic Reset (with Motor)



### Product Overview

The Elevate Cold Aisle Automatic Active Opening Roof Skylight is designed to enhance modular containment cold aisle systems, providing an effective solution for maintaining optimal airflow and temperature control in Data centres. Featuring a standardized design for quick, efficient on-site assembly, this skylight offers a clear rotating glass roof opening as needed with powered re-set to close the roof.

Typically installed in the main centre area of the containment, the automatic active opening skylight supports the seamless integration of various equipment such as temperature and humidity sensors, smoke detectors, video surveillance cameras, and other critical monitoring systems.

With the skylight motor, this unit will also drive up to eight adjacent active skylights connected via control rods.

Available in 600mm and 800mm width variants, the skylight is designed to fit a 1200mm cold aisle corridor as standard. It also includes LED lighting for added visibility and safety, with 5mm thick tempered glass that ensures durability and security.

The active opening feature is automatically triggered by smoke detection, providing a crucial safety function in the event of an emergency. The skylight can be closed automatically via a reset button or remote system control, offering both safety and operational flexibility in a dynamic data centre environment.

- ✓ Available in 600 mm or 800 mm wide versions
- ✓ Standard option at 1260 mm for 1200 aisle
- ✓ Tempered glass panels for maximum light within aisle
- ✓ Rotating glass coupled with smoke detection for centre aisle use
- ✓ Includes integrated LED Lighting
- ✓ Automatic reset to closed position

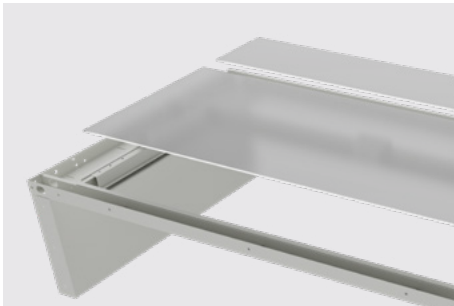
## Product Specifications

Feature	Values
Width	600mm (for 600mm wide cabinets)/800mm (for 800mm wide cabinets)
Depth	1260mm (for 1200mm wide aisle)
Support Plate	300mm high support plate, steel
Opening Angle	90
Glass Thickness	5mm
Opening Mode	Single
Glass Transmittance Ratio	0.9
LED	DC24V, 100Lux
Infrared Induction	DC24V, sensing distance of 3-5m, delay time of 35-40s
Electromagnetic Lock	DC24V, 200mA, pulling force 60kg
Type of Finish	Powder coated
Colour	White/Black
RAL-number	9003 (White), 9004 (Black)
Motor	DC 24V

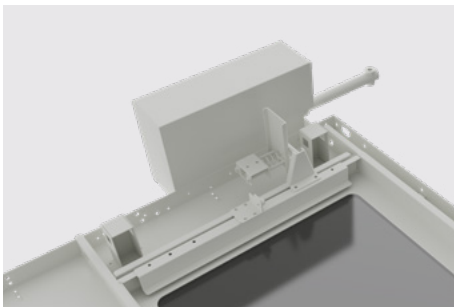
## Product Features Explained



Each Skylight components comes with Integrated 24V LED lighting that connects back to the main Controller.



5mm Glass installed for providing clear daylight and safety of the unit.

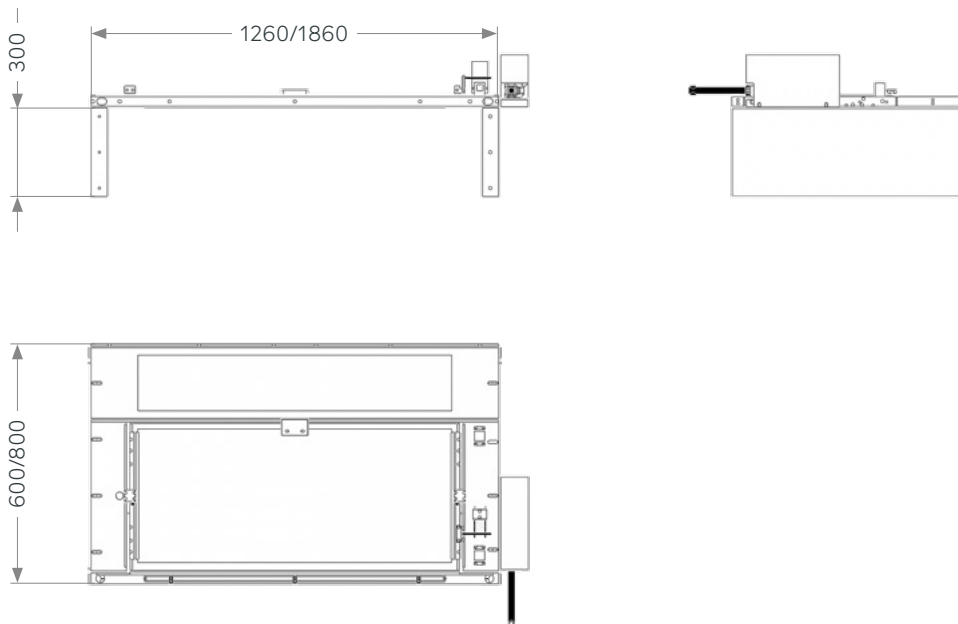


Active Mechanism that allows the Skylight to flip open when smoke is detected. The unit can also drive up to eight adjacent skylights which are all connected together to ensure all are opened at the same time, and closed automatically via reset function.

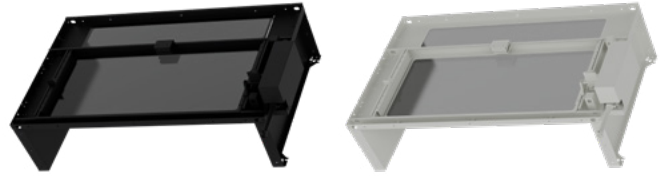
## Product Standards

Applicable standard	Description
Directive 2008/98/EC (WFD)	Waste Framework Directive — compliant. Implemented in the UK through the Waste (England and Wales) Regulations 2011 (SI 2011 No. 988).
ECHA SCIP Database	Compliant; product does not contain SVHCs (Substances of Very High Concern) as defined under REACH Article 33(1). Submission obligations met under EU REACH and UK REACH.
Regulation (EU) 2019/1021 (POPs)	EU Regulation on Persistent Organic Pollutants — compliant. For Great Britain, compliance is aligned with the Persistent Organic Pollutants (Amendment) (EU Exit) Regulations 2020 (SI 2020 No. 1355).
Directive 2011/65/EU (RoHS II)	Restriction of the Use of Certain Hazardous Substances in Electrical and Electronic Equipment — compliant. Applies within EU member states.
Directive (EU) 2015/863 (RoHS III)	Amending Directive 2011/65/EU to add four phthalates (DEHP, BBP, DBP, DIBP) to Annex II — compliant.
UK SI 2012 No. 3032	The Restriction of the Use of Certain Hazardous Substances in Electrical and Electronic Equipment Regulations 2012 (UK RoHS) — compliant for Great Britain. Retained EU law, as amended by the Product Safety and Metrology (Amendment etc.) (EU Exit) Regulations 2019.

## Product Drawing



## Part Number Table



Part Number	Description
572-6612SAM-BK	Elevate Active Single Roof Skylight Automatic Reset (With Motor) 600W x 1200D, Tempered Glass Black
572-6612SAM-WH	Elevate Active Single Roof Skylight Automatic Reset (With Motor) 600W x 1200D, Tempered Glass White
572-6812SAM-BK	Elevate Active Single Roof Skylight Automatic Reset (With Motor) 800W x 1200D, Tempered Glass Black
572-6812SAM-WH	Elevate Active Single Roof Skylight Automatic Reset (With Motor) 800W x 1200D, Tempered Glass White

These skylights can be used with up to seven Skylights that have connecting Rods, see part code series 572-7###SAR-##