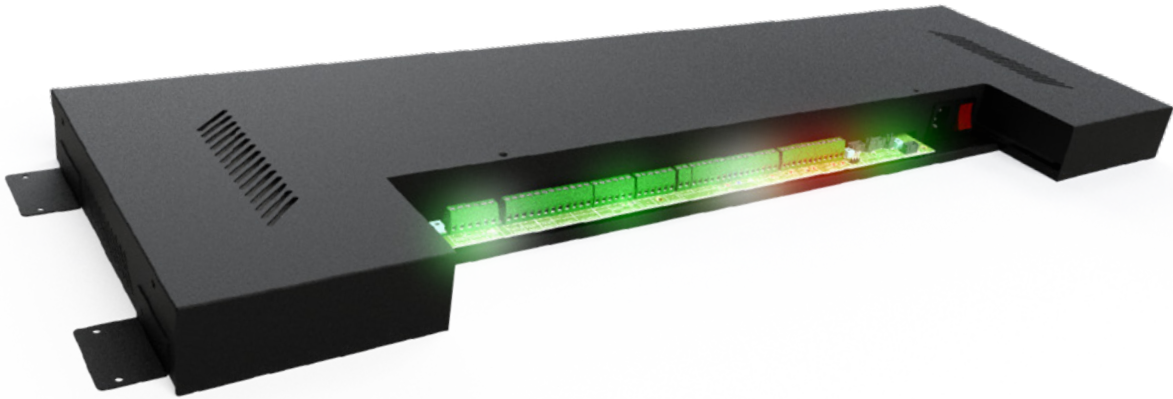


Elevate Aisle Containment Control Box



Product Overview

The Aisle Containment Control Box is a versatile and efficient solution for powering and managing essential devices within aisle containment systems. It seamlessly integrates with skylight electromagnetic locks, aisle lighting, sliding doors, access control systems, and more.

Featuring a flat, compact design, it is engineered for compatibility with aisle containment sliding door installations. The control box ensures no rack U-space is occupied, as it is installed discreetly inside the front door chassis, optimizing both space and functionality. Ideal for managing multiple systems in the cold aisle, this control box provides a streamlined and space-saving approach to aisle containment management.

- ✓ PCB board integrated control
- ✓ Ambient Lighting Linkage
- ✓ Power supply and control of containment components
- ✓ Skylight Reset Control for Automatic Skylights
- ✓ Compatible with aisle sliding door

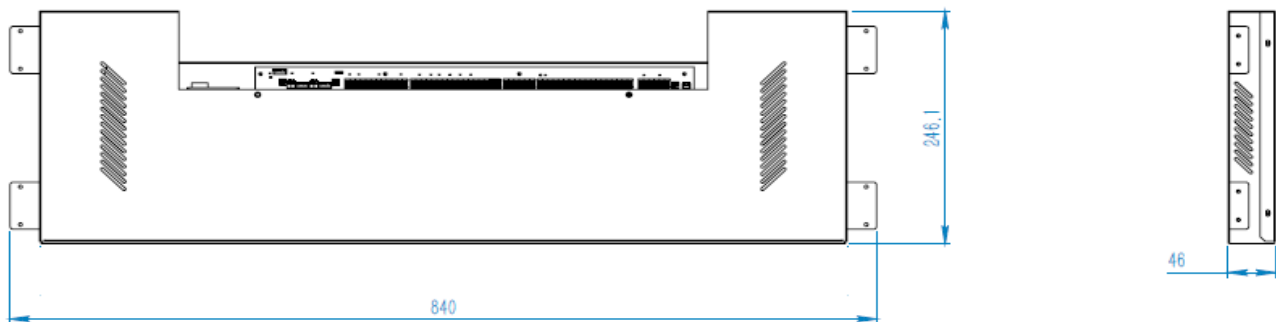
Product Specifications

Feature	Values
Input Voltage	200~240VAC
Output Voltage	DC 24V
Supported Devices	Skylight electromagnetic lock, lighting, sliding door access control, etc.
Fire Alarm Linkage	Supports 24V signal
IP Level	IP20
Material	SPCC
Type of Surface	Powder coated
Colour	Black/White
RAL-number	9005/9003

Product Features Explained

- ✓ Seamless integration with skylight electromagnetic locks, aisle lighting, sliding doors, access control systems
- ✓ Small size of just 46mm will allow discreet installation in the sliding door frame
- ✓ Provides control link for Lighting, Monitoring system and control functions of the Cold Aisle via Control Host

Product Drawing



Product Standards

Applicable standard	Description
Directive 2008/98/EC (WFD)	Waste Framework Directive — compliant. Implemented in the UK through the Waste (England and Wales) Regulations 2011 (SI 2011 No. 988).
ECHA SCIP Database	Compliant; product does not contain SVHCs (Substances of Very High Concern) as defined under REACH Article 33(1). Submission obligations met under EU REACH and UK REACH.
Regulation (EU) 2019/1021 (POPs)	EU Regulation on Persistent Organic Pollutants — compliant. For Great Britain, compliance is aligned with the Persistent Organic Pollutants (Amendment) (EU Exit) Regulations 2020 (SI 2020 No. 1355).
Directive 2011/65/EU (RoHS II)	Restriction of the Use of Certain Hazardous Substances in Electrical and Electronic Equipment — compliant. Applies within EU member states.
Directive (EU) 2015/863 (RoHS III)	Amending Directive 2011/65/EU to add four phthalates (DEHP, BBP, DBP, DIBP) to Annex II — compliant.
UK SI 2012 No. 3032	The Restriction of the Use of Certain Hazardous Substances in Electrical and Electronic Equipment Regulations 2012 (UK RoHS) — compliant for Great Britain. Retained EU law, as amended by the Product Safety and Metrology (Amendment etc.) (EU Exit) Regulations 2019.

Part Number Table

Part Number	Description
579-100	Elevate Cold Aisle Containment Control Box