

Elevate DCR Series 19" Enclosures

Product Overview

Elevate DCR Series with Vented Front Door, Double Vented Rear Doors, both side panels and Front Cable Management.

The new Elevate data centre racks are a versatile range of 600mm or 800mm wide racks designed for the data centre market and based on our successful, market accepted Excel Rack design.

The new DCR series feature the same flexibility of options and configuration with higher airflow mesh doors, airflow management baffles at the front, finger style cable management and upgraded manual or optional electronic handles.

There is also improved cable access for 64 Amp PDU Commando Plugs and down each side with full depth wide brush strips on the roof, cabinet to cabinet cable routing via side brush openings and multiple brush entry through the airflow management baffles.



✓ Available in 42U, 47U and 52U sizes

✓ Airflow management baffles as standard

✓ Upgraded cable tray fitted both sides

✓ High ventilation flat mesh doors front and back

✓ Entry/exit points in roof compatible with 16A, 32A and 64A EN60309 Commando plugs

✓ Front finger cable management as standard

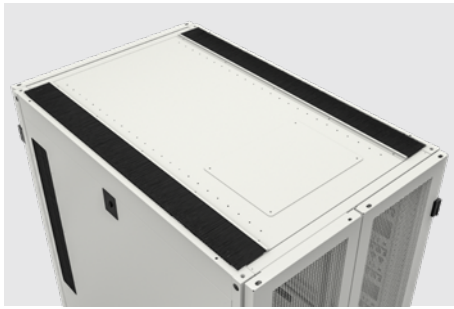


Product Specifications

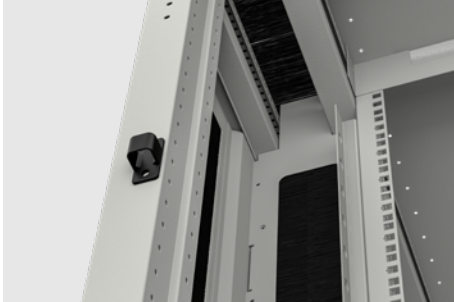
Feature	Values
Mounting Profile	Front and rear
Type of profile rail	L-shaped
Number of rack units (RU)	42, 47, 52
Type of ventilation	Passive
Width	600mm / 800mm
Height	2000mm, 2220mm or 2440mm
Depth	1000mm, 1200mm or 1400mm
Modular Spacing	19 Inch
Max. load capacity	2000kg without Feet
Front door locking system	Two-point
Rear door locking system	Three-point
Type of surface	Powder coated
RAL-number	White (9003), Black (9004)
IP-rating	IP20



Product Features



Full length roof brushes with improved access for installing 32A commando power cables through side brushes, and 64A commando plugs through the main area. Optional covers also available.



Airflow management baffles for all racks as standard featuring overlapping brush cutouts. Baffles covers complete area around front profiles.



Finger cable management supplied on 800mm wide racks as standard and optional on 600mm wide racks.

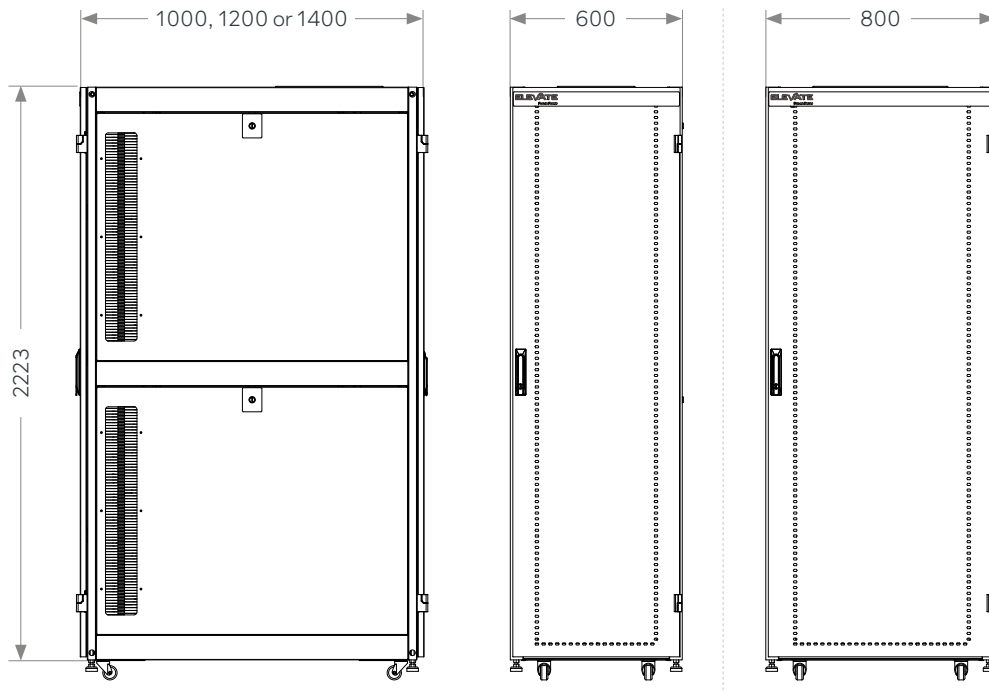


Rear PDU cable tray at 135mm wide for installations of all sizes of PDU, and allows installation of quick mount PDUs.



80% Ventilation rate on vented doors, and side panel cable brush entry as standard. Plain side panels can also be ordered.

Product Drawing



Product Standards

Applicable standard

ANSI/EIA-310-E, BS EN 60297-3-100:2009, DIN 41494 Part 1 & 7

Panel Mounting Racks For Electronics Equipments:
Racks And Panels





Part Number Table - White

Part Number	Description
546-42610-VDBN-WH	Elevate DCR600 42U Rack 600mm x 1000mm Vented (F) D/Vented (R) B/Panels No/Mgmt White
546-42612-VDBN-WH	Elevate DCR600 42U Rack 600mm x 1200mm Vented (F) D/Vented (R) B/Panels No/Mgmt White
546-42810-VDBF-WH	Elevate DCR800 42U Rack 800mm x 1000mm Vented (F) D/Vented (R) B/Panels F/Mgmt White
546-42812-VDBF-WH	Elevate DCR800 42U Rack 800mm x 1200mm Vented (F) D/Vented (R) B/Panels F/Mgmt White
546-47610-VDBN-WH	Elevate DCR600 47U Rack 600mm x 1000mm Vented (F) D/Vented (R) B/Panels No/Mgmt White
546-47612-VDBN-WH	Elevate DCR600 47U Rack 600mm x 1200mm Vented (F) D/Vented (R) B/Panels No/Mgmt White
546-47810-VDBF-WH	Elevate DCR800 47U Rack 800mm x 1000mm Vented (F) D/Vented (R) B/Panels F/Mgmt White
546-47812-VDBF-WH	Elevate DCR800 47U Rack 800mm x 1200mm Vented (F) D/Vented (R) B/Panels F/Mgmt White
546-52610-VDBN-WH	Elevate DCR600 52U Rack 600mm x 1000mm Vented (F) D/Vented (R) B/Panels No/Mgmt White
546-52612-VDBN-WH	Elevate DCR600 52U Rack 600mm x 1200mm Vented (F) D/Vented (R) B/Panels No/Mgmt White
546-52810-VDBF-WH	Elevate DCR800 52U Rack 800mm x 1000mm Vented (F) D/Vented (R) B/Panels F/Mgmt White
546-52812-VDBF-WH	Elevate DCR800 52U Rack 800mm x 1200mm Vented (F) D/Vented (R) B/Panels F/Mgmt White
546-42614-VDPN-WH	Elevate DCR600 42U Rack 600mm x 1400mm Vented (F) D/Vented (R) B/Panels No/Mgmt White
546-42814-VDBF-WH	Elevate DCR800 42U Rack 800mm x 1400mm Vented (F) D/Vented (R) B/Panels F/Mgmt White
546-47614-VDPN-WH	Elevate DCR800 47U Rack 600mm x 1400mm Vented (F) D/Vented (R) B/Panels No/Mgmt White
546-47814-VDBF-WH	Elevate DCR800 47U Rack 800mm x 1400mm Vented (F) D/Vented (R) B/Panels F/Mgmt White
546-52614-VDPN-WH	Elevate DCR800 52U Rack 600mm x 1400mm Vented (F) D/Vented (R) B/Panels No/Mgmt White
546-52814-VDBF-WH	Elevate DCR800 52U Rack 800mm x 1400mm Vented (F) D/Vented (R) B/Panels F/Mgmt White



Part Number Table - Black

Part Number	Description
546-42610-VDBN-BK	Elevate DCR600 42U Rack 600mm x 1000mm Vented (F) D/Vented (R) B/Panels No/Mgmt Black
546-42612-VDBN-BK	Elevate DCR600 42U Rack 600mm x 1200mm Vented (F) D/Vented (R) B/Panels No/Mgmt Black
546-42810-VDBF-BK	Elevate DCR800 42U Rack 800mm x 1000mm Vented (F) D/Vented (R) B/Panels F/Mgmt Black
546-42812-VDBF-BK	Elevate DCR800 42U Rack 800mm x 1200mm Vented (F) D/Vented (R) B/Panels F/Mgmt Black
546-47610-VDBN-BK	Elevate DCR600 47U Rack 600mm x 1000mm Vented (F) D/Vented (R) B/Panels No/Mgmt Black
546-47612-VDBN-BK	Elevate DCR600 47U Rack 600mm x 1200mm Vented (F) D/Vented (R) B/Panels No/Mgmt Black
546-47810-VDBF-BK	Elevate DCR800 47U Rack 800mm x 1000mm Vented (F) D/Vented (R) B/Panels F/Mgmt Black
546-47812-VDBF-BK	Elevate DCR800 47U Rack 800mm x 1200mm Vented (F) D/Vented (R) B/Panels F/Mgmt Black
546-52610-VDBN-BK	Elevate DCR600 52U Rack 600mm x 1000mm Vented (F) D/Vented (R) B/Panels No/Mgmt Black
546-52612-VDBN-BK	Elevate DCR600 52U Rack 600mm x 1200mm Vented (F) D/Vented (R) B/Panels No/Mgmt Black
546-52810-VDBF-BK	Elevate DCR800 52U Rack 800mm x 1000mm Vented (F) D/Vented (R) B/Panels F/Mgmt Black
546-52812-VDBF-BK	Elevate DCR800 52U Rack 800mm x 1200mm Vented (F) D/Vented (R) B/Panels F/Mgmt Black
546-42614-VDPN-BK	Elevate DCR600 42U Rack 600mm x 1400mm Vented (F) D/Vented (R) B/Panels No/Mgmt Black
546-42814-VDBF-BK	Elevate DCR800 42U Rack 800mm x 1400mm Vented (F) D/Vented (R) B/Panels F/Mgmt Black
546-27614-VDPN-BK	Elevate DCR800 47U Rack 600mm x 1400mm Vented (F) D/Vented (R) B/Panels No/Mgmt Black
546-47814-VDBF-BK	Elevate DCR800 47U Rack 800mm x 1400mm Vented (F) D/Vented (R) B/Panels F/Mgmt Black
546-52614-VDPN-BK	Elevate DCR800 52U Rack 600mm x 1400mm Vented (F) D/Vented (R) B/Panels No/Mgmt Black
546-52814-VDBF-BK	Elevate DCR800 52U Rack 800mm x 1400mm Vented (F) D/Vented (R) B/Panels F/Mgmt Black