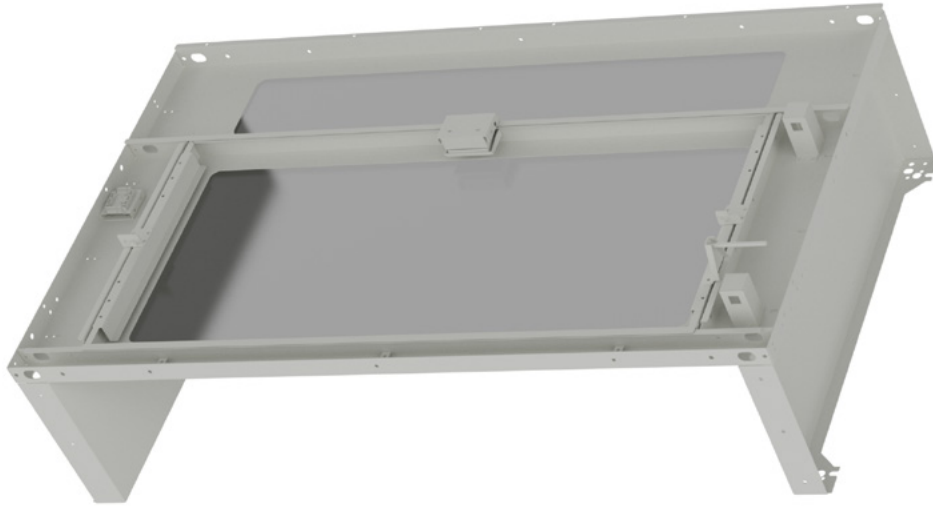


Elevate Aisle Containment Fixed Roof Skylight



Product Overview

The Elevate Cold Aisle Fixed Roof Skylight is a high-performance solution designed to enhance modular containment cold aisle systems in Data centres. Featuring a standardized design, this skylight enables quick and easy on-site assembly while offering excellent natural light transmission. Its robust construction not only provides a clear, open skylight.

The Elevate Skylight supports the seamless integration of various equipment, including temperature and humidity sensors, smoke detectors, and video surveillance cameras. Available in 600mm and 800mm width variants, it is specifically designed for a 1200mm cold aisle corridor to optimize airflow and reduce cooling costs. Also available in a 300mm width variant, where an In-Row Cooler is being used in the Cold Aisle.

Equipped with LED lighting for improved visibility and featuring 5mm thick tempered glass for enhanced safety, this skylight is built to withstand the rigors of the data centre environment. Its smart design ensures reliable performance while contributing to an efficient and sustainable cooling system.

- ✓ Available in 300mm, 600 mm or 800 mm wide versions
- ✓ Standard option at 1260 mm for 1200 aisle
- ✓ Tempered glass panels for maximum light within aisle
- ✓ Fixed glass with cable trough for end of aisle use
- ✓ Include integrated LED Lighting
- ✓ Available in black and white finish

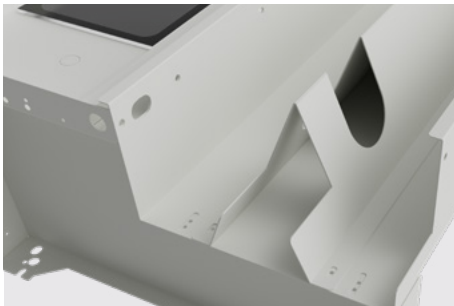
Product Specifications

Feature	Values
Width	300mm (for in-row cooler) 600mm (for 600mm wide cabinets) 800mm (for 800mm wide cabinets)
Depth	1260mm (for 1200 wide aisle)
Support Plate	300mm high support plate, steel
Opening Angle	Fixed
Glass Thickness	5mm
Glass Transmittance Ratio	0.9
LED	DC24V, 100Lux
Infrared Induction	DC24V, sensing distance of 3-5m, delay time of 35-40s
Type of Finish	Powder coated
Colour	White/Black
RAL-number	9003 (White), 9004 (Black)

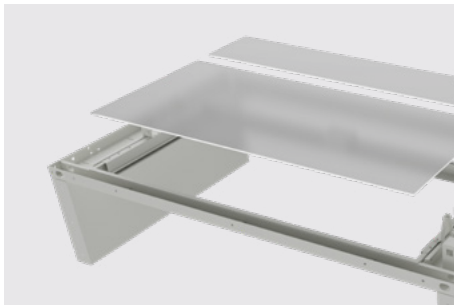
Product Features Explained



Each Skylight components comes with Integrated 24V LED lighting that connects back to the main Controller.

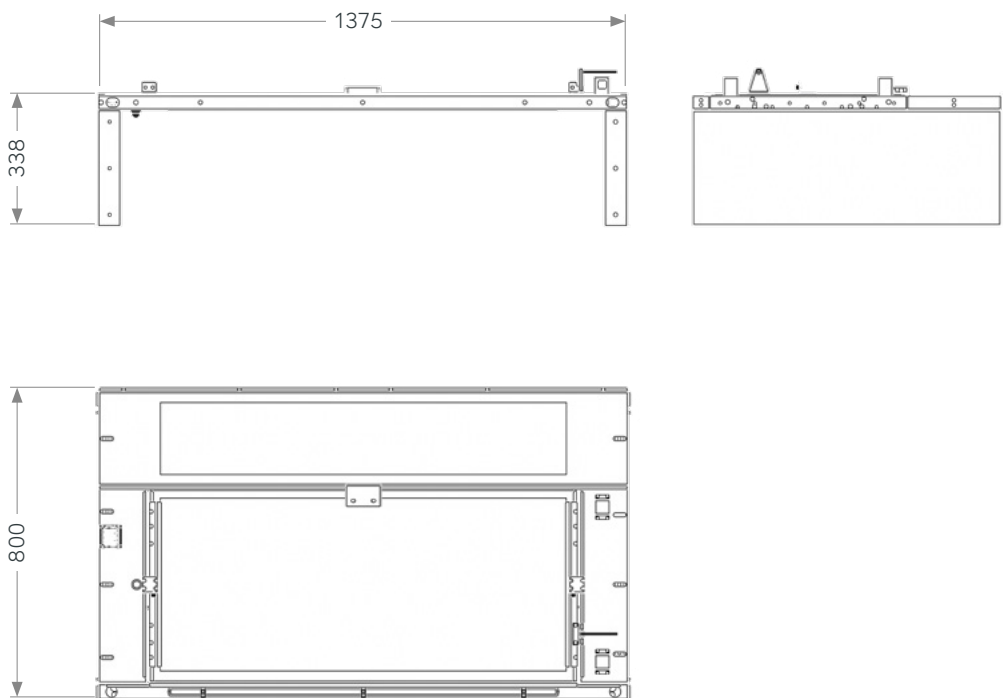


Cable management is also included in the Fixed end skylight and have variable positioning to allow good segregation from power and data cables.

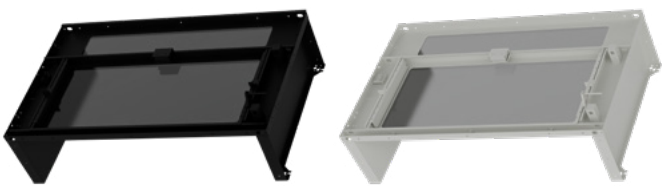


5mm Glass installed for providing clear daylight and safety of the unit.

Product Drawing



Part Number Table



Part Number	Description
572-3312F-WH	Elevate Fixed Glass Roof Skylight 300W x 1200D, Tempered Glass White
572-3312F-BK	Elevate Fixed Glass Roof Skylight 300W x 1200D, Tempered Glass Black
572-3612F-WH	Elevate Fixed Glass Roof Skylight 600W x 1200D, Tempered Glass White
572-3612F-BK	Elevate Fixed Glass Roof Skylight 600W x 1200D, Tempered Glass Black
572-3812F-WH	Elevate Fixed Glass Roof Skylight 800W x 1200D, Tempered Glass White
572-3812F-BK	Elevate Fixed Glass Roof Skylight 800W x 1200D, Tempered Glass Black