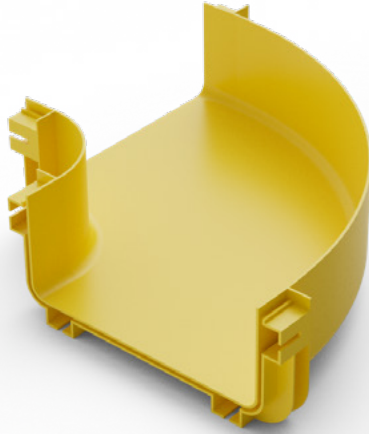


# Elevate Fibre Cable Duct System LSZH

## 90° Horizontal Elbow Bend



### Product Overview

Elevate Fibre Optic Cable Duct Systems are crafted from Low Smoke Zero Halogen (LSZH) material, ensuring superior safety and performance in critical environments. The LSZH material significantly reduces the emission of toxic and corrosive gases in the event of a fire, making it an ideal choice for use in confined spaces such as data centers, tunnels, and public buildings. This feature not only enhances safety but also complies with stringent fire safety regulations.

Available in a comprehensive range of sizes, the Elevate duct system is designed to accommodate various cable volumes, ensuring flexibility and scalability for your network infrastructure. Whether you need to manage a small bundle of cables or a large volume, our duct system provides the perfect fit. Additionally the Elevate solution includes a wide array of accessories, including bends, tees, and junctions, to meet diverse design requirements and facilitate easy installation and maintenance. This versatility ensures that our duct system can be seamlessly integrated into any network layout, providing a reliable and efficient solution for your fibre optic cable management need.

✓ LSZH Flame Retardant

✓ Easy to Assemble

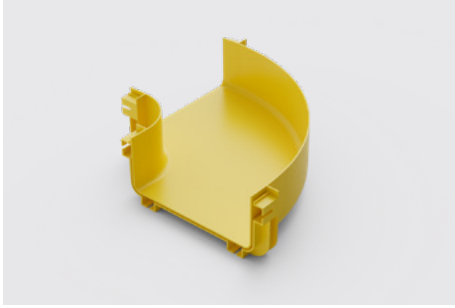
✓ Range of sizes and accessories

✓ UK Design Assistance

# Product Specifications

Feature	Values
Colour	Yellow (Pantone 123C)
Material	ABS Plastic
Material Type	LSZH
460-100-ELB90	
Length	100mm
Width	100mm
Weight	0.67g
460-150-ELB90	
Length	100mm
Width	150mm
Weight	0.90kg
460-240-ELB90	
Length	100mm
Width	240mm
Weight	0.89kg
460-300-ELB90	
Length	100mm
Width	300mm
Weight	1.66kg

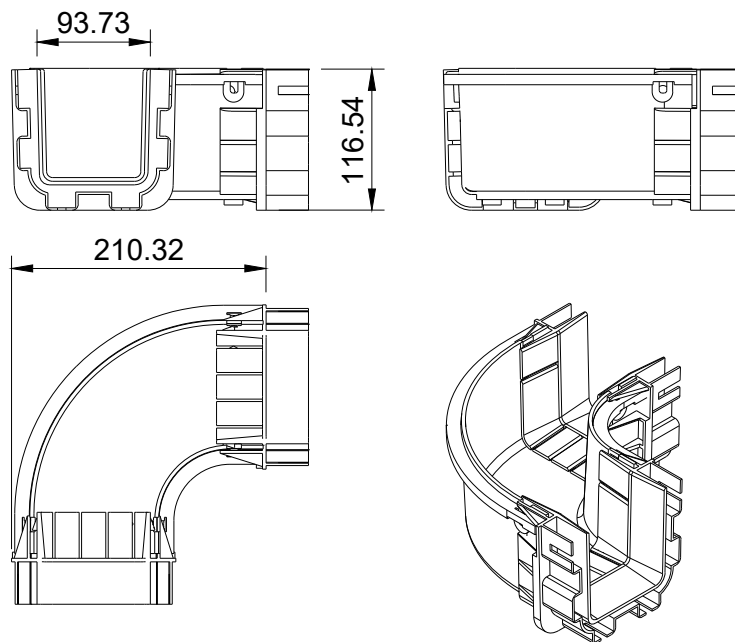
## Product Features



Integrated channels positioned on the side and base of trunking to aid coupling and mounting on support brackets.

## Product Drawing

Dimensions shown for 460-100-ELB90



# Product Standards

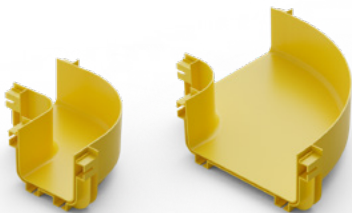
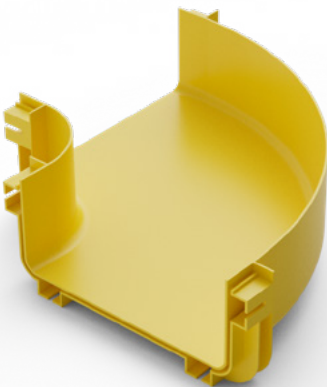
## Applicable standard

RoHS-II/-III (2011/65/EU & 2015/863): 2023  
Our products, demonstrate full adherence to the regulatory stipulations of the EU Directive 2011/65/EU (RoHS-II) and its corresponding delegated directive 2015/863 (RoHS-III).

WFD:2023  
Compliant to Waste Framework Directive

SCIP:2023  
Compliant - Does Not Contain Substances of Concern In articles as such or in complex objects (Products)

POPs (EU) No 2019/1021 SCIP:2023  
EU Regulation for the restriction of Persistent Organic Pollutants.



## Part Number Table

Part Number	Description
460-100-ELB90	Elevate 90° Horizontal Elbow Bend 100mm Wide
460-150-ELB90	Elevate 90° Horizontal Elbow Bend 150mm Wide
460-240-ELB90	Elevate 90° Horizontal Elbow Bend 240mm Wide
460-300-ELB90	Elevate 90° Horizontal Elbow Bend 300mm Wide