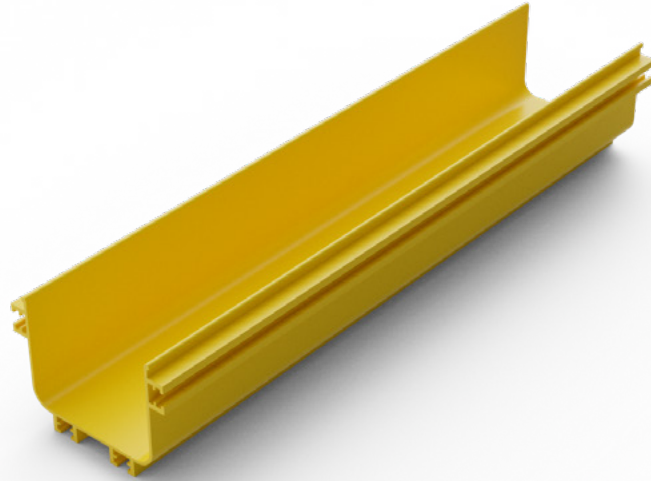


# Elevate Fibre Cable Duct System LSZH

## Duct Straight Length



### Product Overview

Elevate Fibre Optic Cable Duct Systems are crafted from Low Smoke Zero Halogen (LSZH) material, ensuring superior safety and performance in critical environments. The LSZH material significantly reduces the emission of toxic and corrosive gases in the event of a fire, making it an ideal choice for use in confined spaces such as data centers, tunnels, and public buildings. This feature not only enhances safety but also complies with stringent fire safety regulations.

Available in a comprehensive range of sizes, the Elevate duct system is designed to accommodate various cable volumes, ensuring flexibility and scalability for your network infrastructure. Whether you need to manage a small bundle of cables or a large volume, our duct system provides the perfect fit. Additionally the Elevate solution includes a wide array of accessories, including bends, tees, and junctions, to meet diverse design requirements and facilitate easy installation and maintenance. This versatility ensures that our duct system can be seamlessly integrated into any network layout, providing a reliable and efficient solution for your fibre optic cable management need.

✓ LSZH Flame Retardant

✓ Easy to Assemble

✓ Range of sizes and accessories

✓ UK Design Assistance

## Product Specifications

Feature	Values
Colour	Yellow (Pantone 123C)
Material	ABS Plastic
Material Type	LSZH

460-100-LSZH	
Length	2000mm
Height	100mm
Width	100mm
Weight	5.96kg

Fill Ratio	OD	Quantity
50%	2/3mm	875/1170
75%	2/3mm	1350/1755
100%	2/3mm	1820/2428

460-150-LSZH	
Length	2000mm
Height	100mm
Width	150mm
Weight	5.85kg

Fill Ratio	OD	Quantity
50%	2/3mm	1755/1313
75%	2/3mm	2960/3945
100%	2/3mm	3945/5265

## Feature

## Values

## 460-240-LSZH

Length	2000mm
Height	100mm
Width	240mm
Weight	4.30kg

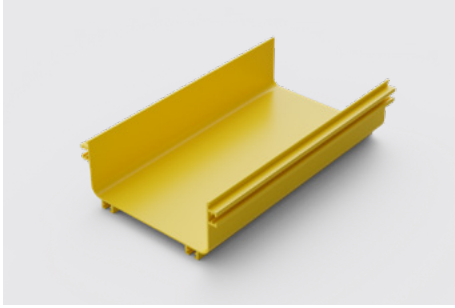
Fill Ratio	OD	Quantity
50%	2/3mm	1910/849
75%	2/3mm	2866/1273
100%	2/3mm	3821/1698

## 460-300-LSZH

Length	2000mm
Height	100mm
Width	300mm
Weight	5.85kg

Fill Ratio	OD	Quantity
50%	2/3mm	2370/1055
75%	2/3mm	3556/1578
100%	2/3mm	5136/2106

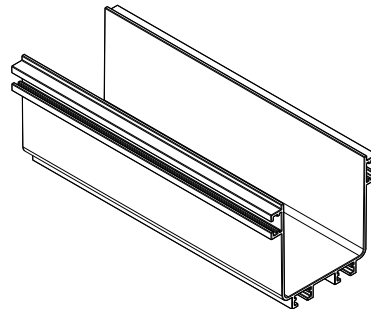
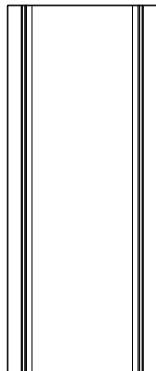
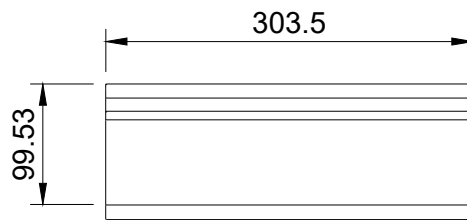
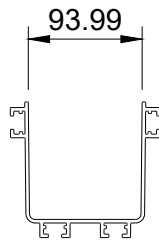
## Product Features



Integrated channels positioned on the side and base of trunking to aid coupling and mounting on support brackets.

## Product Drawing

Dimensions shown for 460-100-LSZH



## Product Standards

### Applicable standard

---

#### RoHS-II/-III (2011/65/EU & 2015/863): 2023

Our products, demonstrate full adherence to the regulatory stipulations of the EU Directive 2011/65/EU (RoHS-II) and its corresponding delegated directive 2015/863 (RoHS-III).

#### WFD:2023

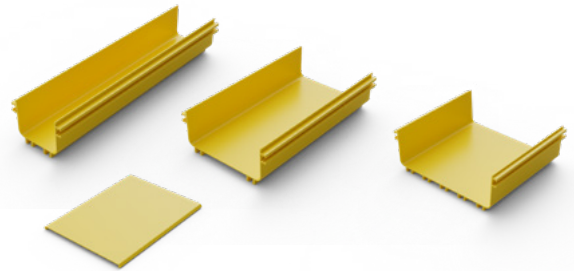
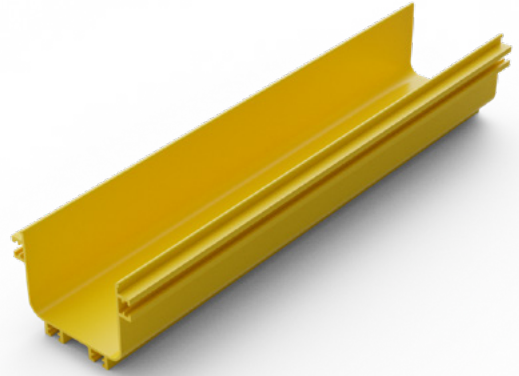
Compliant to Waste Framework Directive

#### SCIP:2023

Compliant - Does Not Contain Substances of Concern In articles as such or in complex objects (Products)

#### POPs (EU) No 2019/1021 SCIP:2023

EU Regulation for the restriction of Persistent Organic Pollutants.



## Part Number Table

Part Number	Description
460-100-LSZH	Elevate Fibre Duct 100mm Straight Length LSZH 2m
460-150-LSZH	Elevate Fibre Duct 150mm Straight Length LSZH 2m
460-240-LSZH	Elevate Fibre Duct 240mm Straight Length LSZH 2m
460-300-LSZH	Elevate Fibre Duct 300mm Straight Length LSZH 2m
460-100-CVR	Elevate Fibre Duct Cover 100mm Straight Length LSZH 2m
460-150-CVR	Elevate Fibre Duct Cover 150mm Straight Length LSZH 2m
460-240-CVR	Elevate Fibre Duct Cover 240mm Straight Length LSZH 2m
460-300-CVR	Elevate Fibre Duct Cover 300mm Straight Length LSZH 2m