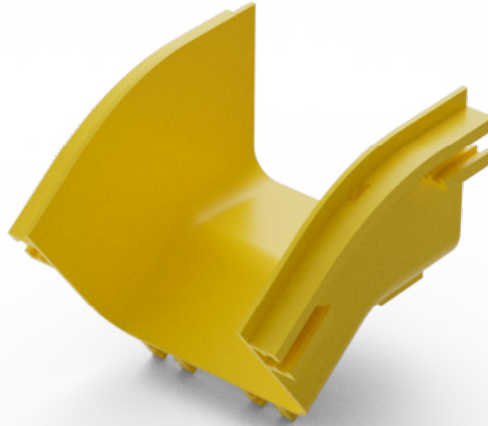


Elevate Fibre Cable Duct System LS0H

External Riser 45°



Product Overview

Elevate Fibre Optic Cable Duct Systems are crafted from Low Smoke Zero Halogen (LS0H) material, ensuring superior safety and performance in critical environments. The LS0H material significantly reduces the emission of toxic and corrosive gases in the event of a fire, making it an ideal choice for use in confined spaces such as data centers, tunnels, and public buildings. This feature not only enhances safety but also complies with stringent fire safety regulations.

Available in a comprehensive range of sizes, the Elevate duct system is designed to accommodate various cable volumes, ensuring flexibility and scalability for your network infrastructure. Whether you need to manage a small bundle of cables or a large volume, our duct system provides the perfect fit. Additionally the Elevate solution includes a wide array of accessories, including bends, tees, and junctions, to meet diverse design requirements and facilitate easy installation and maintenance. This versatility ensures that our duct system can be seamlessly integrated into any network layout, providing a reliable and efficient solution for your fibre optic cable management need.

✓ LS0H Flame Retardant

✓ Easy to Assemble

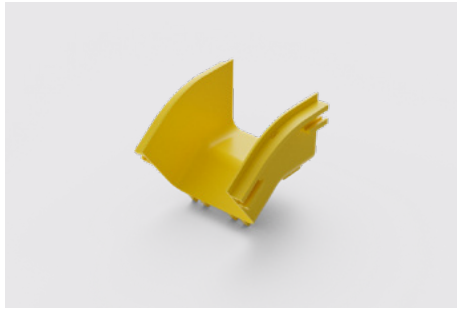
✓ Range of sizes and accessories

✓ UK Design Assistance

Product Specifications

Feature	Values
Colour	Yellow (Pantone 123C)
Material	ABS Plastic
Material Type	LSZH
460-100-ERS45	
Length	2000mm
Width	100mm
Weight	0.37kg
460-150-ERS45	
Length	2000mm
Width	150mm
Weight	0.30kg
460-240-ERS45	
Length	2000mm
Width	240mm
Weight	0.24kg
460-300-ERS45	
Length	2000mm
Width	300mm
Weight	0.46kg

Product Features



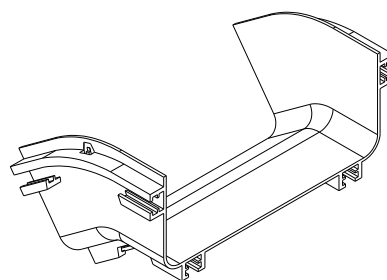
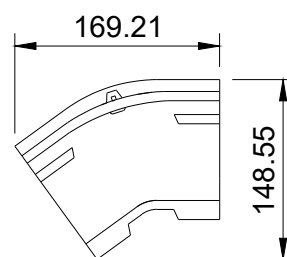
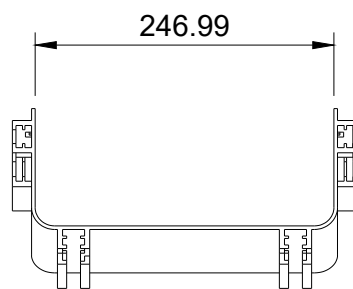
Application - External Riser 45°

Connection Type - x8 M5 Screw and Nut included

Cover - Yes

Product Drawing

Dimensions shown for 460-240-ERS45



Product Standards

Applicable standard

RoHS-II/-III (2011/65/EU & 2015/863): 2023

Our products, demonstrate full adherence to the regulatory stipulations of the EU Directive 2011/65/EU (RoHS-II) and its corresponding delegated directive 2015/863 (RoHS-III).

WFD:2023

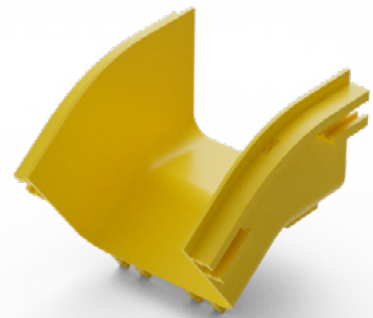
Compliant to Waste Framework Directive

SCIP:2023

Compliant - Does Not Contain Substances of Concern In articles as such or in complex objects (Products)

POPs (EU) No 2019/1021 SCIP:2023

EU Regulation for the restriction of Persistent Organic Pollutants.



Part Number Table

Part Number	Description
460-100-ERS45	Elevate External Riser 45° 100mm Wide
460-150-ERS45	Elevate External Riser 45° 150mm Wide
460-240-ERS45	Elevate External Riser 45° 240mm Wide
460-300-ERS45	Elevate External Riser 45° 300mm Wide

