

Elevate Unloaded High Density Chassis

Base8, 12, 16 and 24



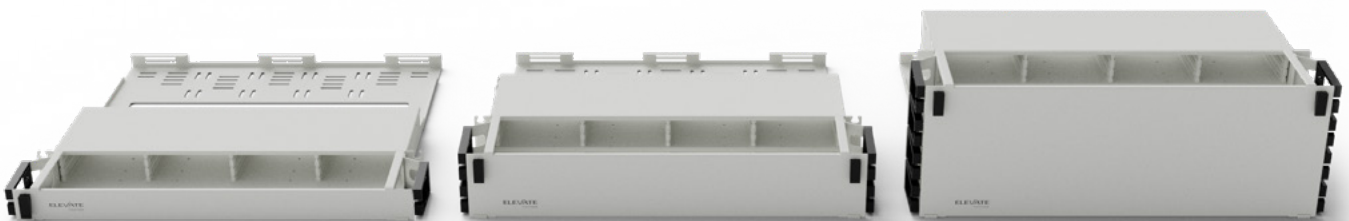
Product Overview

The Elevate high density chassis is supplied unloaded and is designed to provide a modular patching system, compatible with Elevate cassettes each 1u of rack space can accommodate 18 x Base8, 12 x Base12, 9 x Base16 or 6 x Base 24 cassettes providing up to 144 ports on LC presentation.

As standard each chassis is supplied with front and rear cable management.

- ✓ Hinged front door
- ✓ Hinged rear management
- ✓ Side cable management
- ✓ 1u, 2u and 4u options available
- ✓ Removable front management
- ✓ Easy fix mounting profiles

Available Options



1u

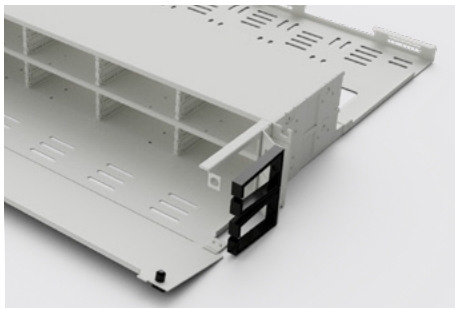
2u

4u

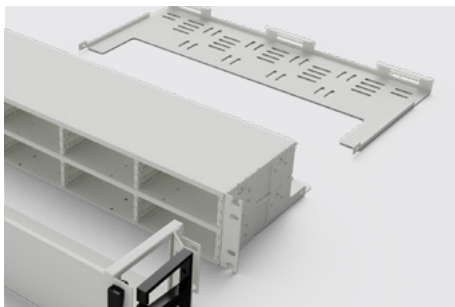
Product Specifications

| Feature | Values | | |
|-----------------------------|-----------------------------------|------|-------|
| | 1u | 2u | 4u |
| | Number of cassette slots | | |
| Base8 | 18 | 36 | 72 |
| Base12 | 12 | 24 | 48 |
| Base16 | 9 | 18 | 36 |
| Base24 | 6 | 12 | 24 |
| Mounting method | 482.6mm (19") mounting | | |
| Material | Cold rolled steel and plastic | | |
| Material coating | Powder coating | | |
| Colour | White (RAL9003), Black (RAL 9004) | | |
| Height | 44mm | 88mm | 176mm |
| Width | 482mm | | |
| Depth without front manager | 362mm | | |
| Depth with front manager | 462mm | | |
| Operating temperature | -20 to +70 | | |
| Storage temperature | -20 to +85 | | |

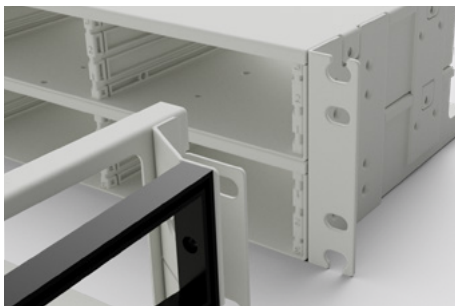
Product Features Explained



Dedicated management with hinged front door and labelling.

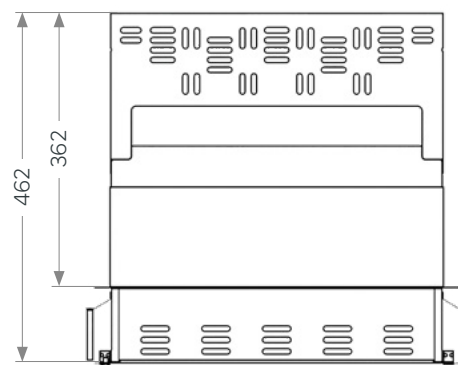
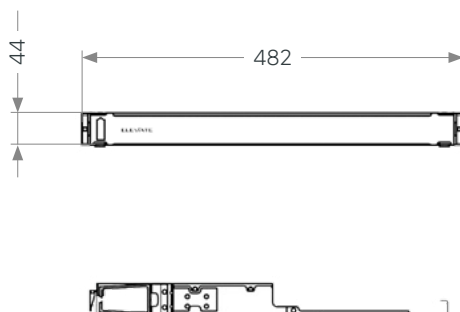


Hinged rear management for ease of installation.



Easy fix mounting brackets.

Product Drawing



Part Number Table – Base8

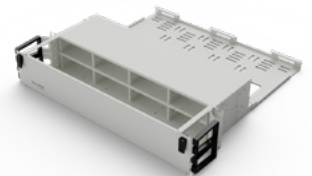
| Part Number | Description |
|-------------|--|
| 208-400 | Elevate HD Base8 chassis 1u 18 slots White |
| 208-401 | Elevate HD Base8 chassis 1u 18 slots Black |
| 208-408 | Elevate HD Base8 chassis 2u 36 slots White |
| 208-409 | Elevate HD Base8 chassis 2u 36 slots Black |
| 208-416 | Elevate HD Base8 chassis 4u 72 slots White |
| 208-417 | Elevate HD Base8 chassis 4u 72 slots Black |



Also available in black.

Part Number Table – Base12

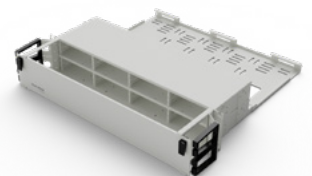
| Part Number | Description |
|-------------|---|
| 208-402 | Elevate HD Base12 chassis 1u 12 slots White |
| 208-403 | Elevate HD Base12 chassis 1u 12 slots Black |
| 208-410 | Elevate HD Base12 chassis 2u 24 slots White |
| 208-411 | Elevate HD Base12 chassis 2u 24 slots Black |
| 208-418 | Elevate HD Base12 chassis 4u 48 slots White |
| 208-419 | Elevate HD Base12 chassis 4u 48 slots Black |



Also available in black.

Part Number Table – Base16

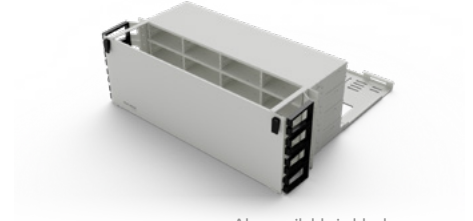
| Part Number | Description |
|-------------|---|
| 208-404 | Elevate HD Base16 chassis 1u 9 slots White |
| 208-405 | Elevate HD Base16 chassis 1u 9 slots Black |
| 208-412 | Elevate HD Base16 chassis 2u 18 slots White |
| 208-413 | Elevate HD Base16 chassis 2u 18 slots Black |
| 208-420 | Elevate HD Base16 chassis 4u 36 slots White |
| 208-421 | Elevate HD Base16 chassis 4u 36 slots Black |



Also available in black.

Part Number Table – Base24

| Part Number | Description |
|-------------|---|
| 208-406 | Elevate HD Base24 chassis 1u 6 slots White |
| 208-407 | Elevate HD Base24 chassis 1u 6 slots Black |
| 208-414 | Elevate HD Base24 chassis 2u 12 slots White |
| 208-415 | Elevate HD Base24 chassis 2u 12 slots Black |
| 208-422 | Elevate HD Base24 chassis 4u 24 slots White |
| 208-423 | Elevate HD Base24 chassis 4u 24 slots Black |



Also available in black.