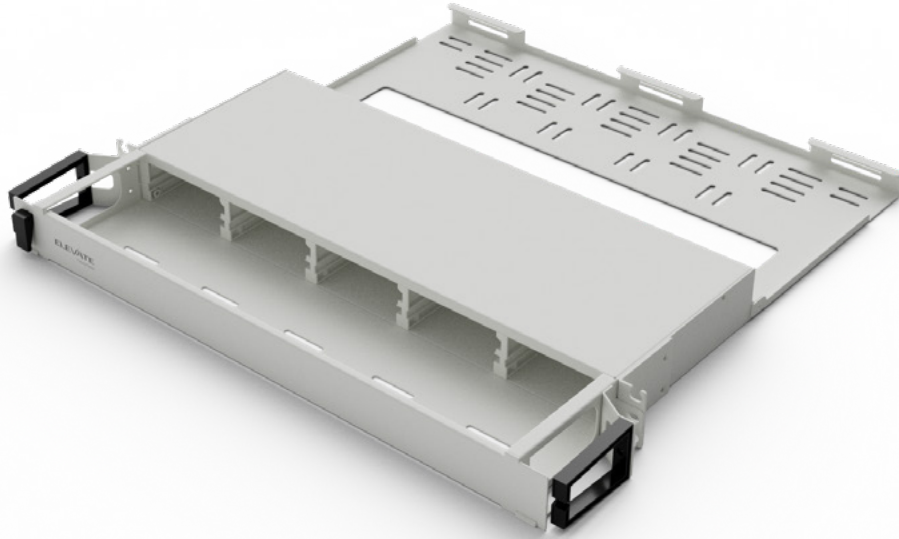


# Elevate Unloaded Medium Density Chassis Base8, 12, and 24



## Product Overview

The Elevate range of medium-density chassis have been designed to provide an expandable and innovative cassette based patching system, housing up to 5 Base 8, 12, 16 or 24f cassettes enabling up to 120 LC ports per 1u of rack space. To further the flexibility offered by this modular design pass through, splice and blanking cassette inserts are also available.

Fitted with front and rear cable management to allow incoming and outgoing cable management throughout the installation.

- ✓ Hinged front door
- ✓ Hinged rear management
- ✓ Side cable management
- ✓ Available in 1u
- ✓ Removable front management
- ✓ Easy fix mounting profiles

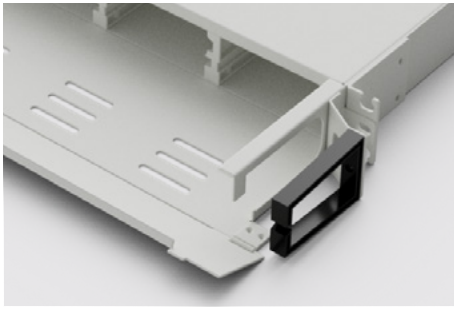
**The Elevate Medium Density Chassis is compatible with the Elevate MD Cassettes.**



## Product Specifications

Feature	Values
	1U
	Number of cassette slots
Base 8	5
Base 12	
Base 16	
Base 24	
Mounting method	482.6mm (19") mounting
Material	Cold rolled steel and plastic
Material coating	Powder coating
Colour	White (RAL9003), Black (RAL 9004)
Height	44mm
Width	482mm
Depth without front manager	362mm
Depth with front manager	462mm
Operating temperature	-20 to +70
Storage temperature	-20 to +85

## Product Features Explained



Dedicated management with hinged front door and labelling.

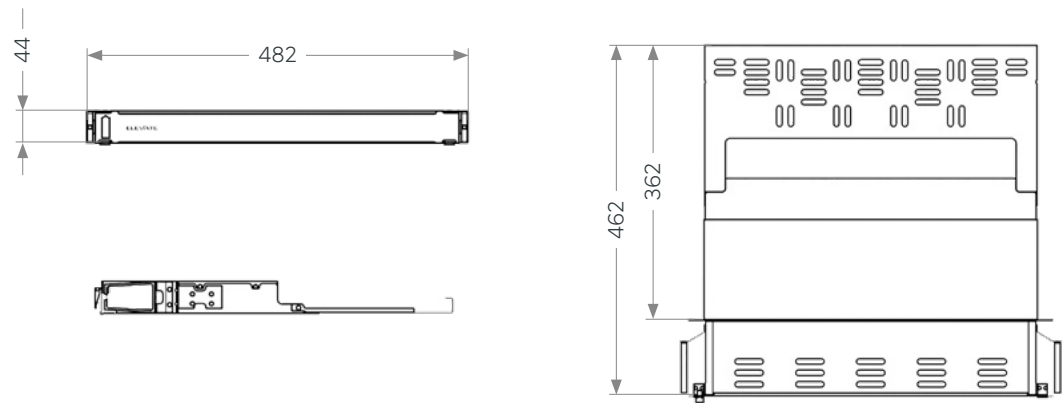


Hinged rear management for ease of installation.



Easy fix mounting brackets.

Product Drawing



Part Number Table



Part Number	Description
209-424	Elevate Medium Density 1u 5 x slot chassis WH
209-424-BK	Elevate Medium Density 1u 5 x slot chassis BK