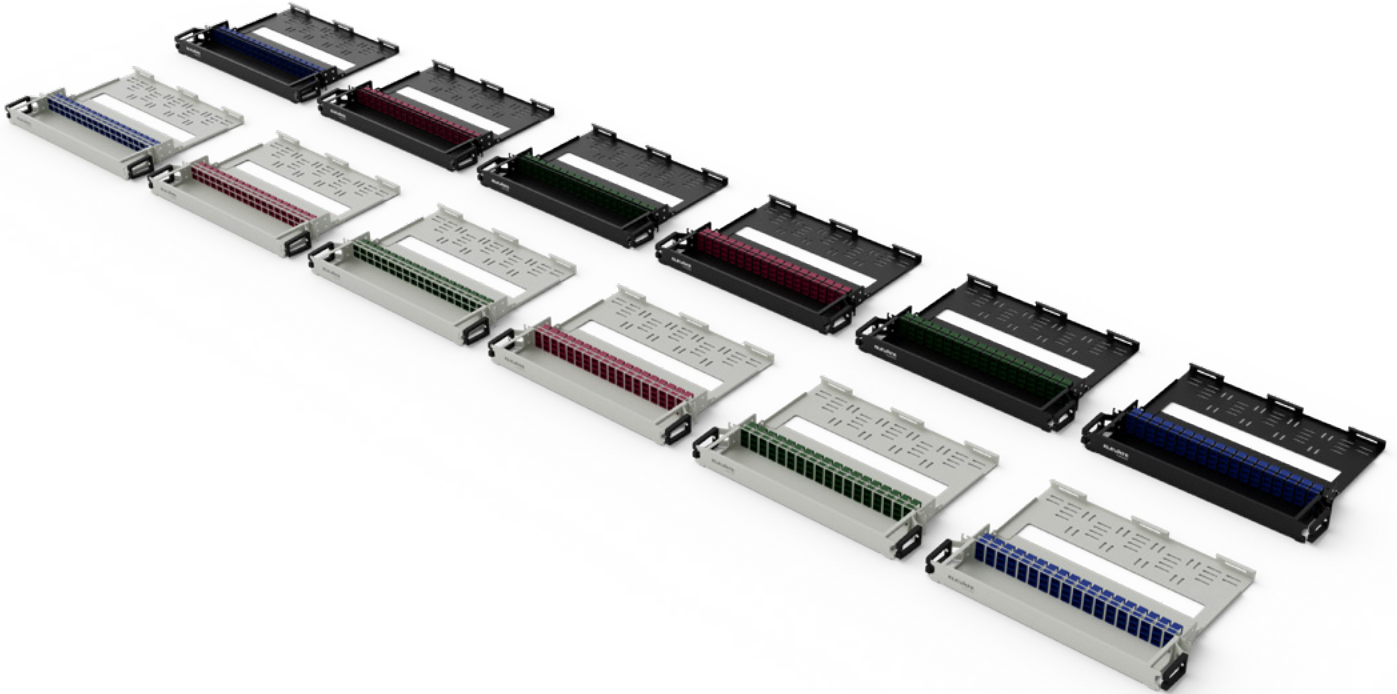


Elevate Very Small Form Factor (VSFF) SN Patch Panel



Product Overview

Designed for maximum density in modern networks, Elevate VSFF patch panels utilise industry-leading SENKO SN connectivity to deliver exceptional fibre capacity within a single 1U rack space - supporting configurations of up to 288 or 432 fibres. These best-in-class panels are engineered for efficiency, featuring integrated front cable management for neat, organised routing and a hinged front cover with a dedicated labelling area for clear identification. This combination ensures high-density connectivity with simplified installation and maintenance, making them ideal for space-constrained data centre environments.

- ✓ Front Cable Management
- ✓ 36 or 54 SN 8F adaptors per patch panel
- ✓ Hinged Front Door
- ✓ Hinged Rear Cable Management
- ✓ Recessed Adaptors
- ✓ Fixing Kit included
- ✓ 25 year system warranty

Product Specifications

Feature	Values
Suitable for number of Fibre Cores	288 or 432
Suitable for number of Module Inserts	36 or 54
Loaded with number of Couplings / Adaptors	36 or 54
With pigtails	No
Fibre type	OS2
Fibre class	OS2
APC-type	No
Type of connector external	SN
Type of connector interior	SN
Colour	White / Black
RAL-number	9003 / 9004
Mounting method	482.6 mm (19 inch) mounting
Number of rack units (RU)	1
Height	44mm
Width	504mm
Depth	380mm
Operating Temperature	-40°C to +80°C
IP Rating	IP20
Material	Colds rolled steel and Polycarbonate
Material Thickness	1.2 mm
Material Coating(Metal)	Powder coating
RoHs Compliant Adaptor	yes

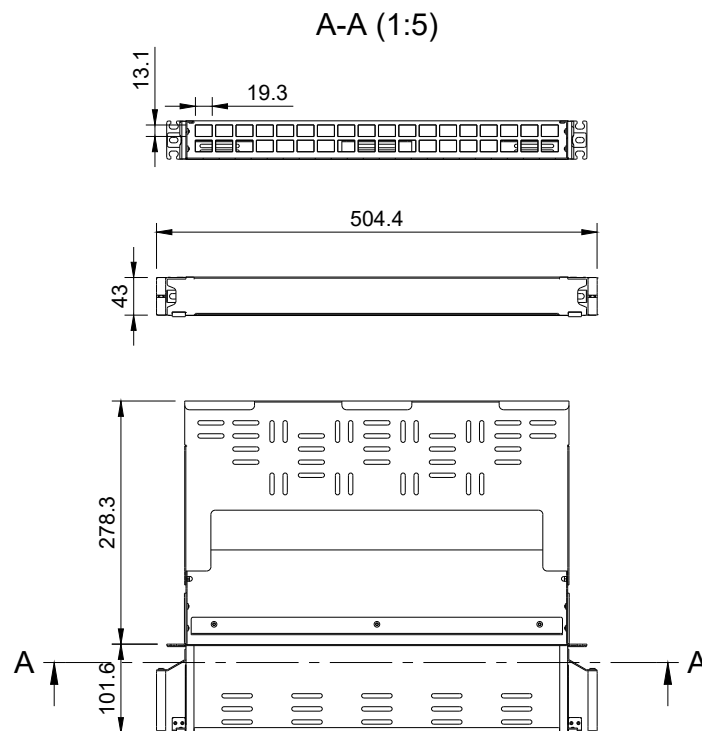
Product Specifications

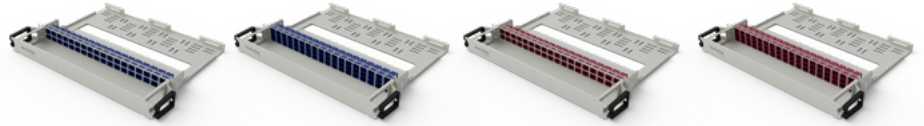
Feature	Values	
Adaptor Specifications		
Optical Data	Typical Insertion Loss (dB)	0.1
	Max. Insertion Loss (dB)	0.2
Mechanical Data	Durability	500 matings per TIA-568
	Fixing Method	Snap-fit (Adaptor without flange)
	Housing Material Type	Plastic
	Fixing Spring Material Type	Metal stainless steel
	Sleeve Material	Zirconia
	Dust Protection Method	Removable dust plugs
Environmental Data	Operating Temperature	-40°C to +75°C
	RoHS Compliance	2015/863 RoHS
	REACH Compliance	Yes
	Free of Halogen	Yes
	Humidity Resistance	0.95

Applicable Standards

Standard	Detail
EN 50173-50173-1:2018	Information technology. Generic cabling systems – General requirements
UL-94-V-0	Burning stops within 10 seconds after two applications of ten seconds each of a flame to a test bar. NO flaming drips are allowed.
Directive 2008/98/EC (WFD)	Waste Framework Directive — compliant. Implemented in the UK through the Waste (England and Wales) Regulations 2011 (SI 2011 No. 988).
ECHA SCIP Database	Compliant; product does not contain SVHCs (Substances of Very High Concern) as defined under REACH Article 33(1). Submission obligations met under EU REACH and UK REACH.
Regulation (EU) 2019/1021 (POPs)	EU Regulation on Persistent Organic Pollutants — compliant. For Great Britain, compliance is aligned with the Persistent Organic Pollutants (Amendment) (EU Exit) Regulations 2020 (SI 2020 No. 1355).
Directive 2011/65/EU (RoHS II)	Restriction of the Use of Certain Hazardous Substances in Electrical and Electronic Equipment — compliant. Applies within EU member states.
Directive (EU) 2015/863 (RoHS III)	Amending Directive 2011/65/EU to add four phthalates (DEHP, BBP, DBP, DIBP) to Annex II — compliant.
UK SI 2012 No. 3032	The Restriction of the Use of Certain Hazardous Substances in Electrical and Electronic Equipment Regulations 2012 (UK RoHS) — compliant for Great Britain. Retained EU law, as amended by the Product Safety and Metrology (Amendment etc.) (EU Exit) Regulations 2019.

Product Drawing





Part Number Table

Part Number	Description
Singlemode: APC	
211-003	Elevate 36 Port APC Singlemode OS2 1U Fixed White Patch Panel with 36 x SN 8F Adaptors (288F) Green
211-003-BK	Elevate 36 Port APC Singlemode OS2 1U Fixed Black Patch Panel with 36 x SN 8F Adaptors (288F) Green
221-203	Elevate 54 Port APC Singlemode OS2 1U Fixed White Patch Panel with 54 x SN 8F Adaptors (432F) Green
221-203-BK	Elevate 54 Port APC Singlemode OS2 1U Fixed Black Patch Panel with 54 x SN 8F Adaptors (432F) Green
Singlemode: OS2	
211-001	Elevate 36 Port Singlemode OS2 1U Fixed White Patch Panel with 36 x SN 8F Adaptors (288F) Blue
211-001-BK	Elevate 36 Port Singlemode OS2 1U Fixed Black Patch Panel with 36 x SN 8F Adaptors (288F) Blue
221-201	Elevate 54 Port Singlemode OS2 1U Fixed White Patch Panel with 54 x SN 8F Adaptors (432F) Blue
221-201-BK	Elevate 54 Port Singlemode OS2 1U Fixed Black Patch Panel with 54 x SN 8F Adaptors (432F) Blue
Multimode: OM4	
211-002	Elevate 36 Port Multimode OM4 1U Fixed White Patch Panel with 36 x SN 8F Adaptors (288F) Violet
211-002-BK	Elevate 36 Port Multimode OM4 1U Fixed Black Patch Panel with 36 x SN 8F Adaptors (288F) Violet
221-202	Elevate 54 Port Multimode OM4 1U Fixed White Patch Panel with 54 x SN 8F Adaptors (432F) Violet
221-202-BK	Elevate 54 Port Multimode OM4 1U Fixed Black Patch Panel with 54 x SN 8F Adaptors (432F) Violet