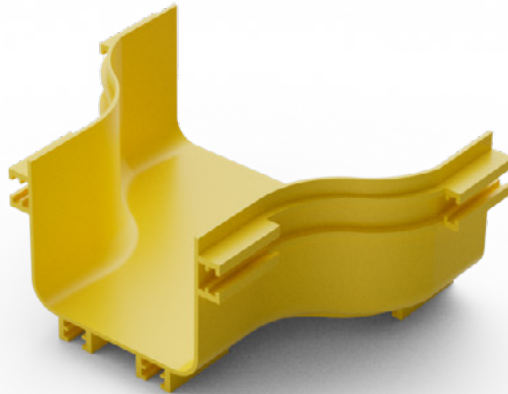


Elevate Fibre Cable Duct System LSZH Reducer Couplers



Product Overview

Elevate Fibre Optic Cable Duct Systems are crafted from Low Smoke Zero Halogen (LSZH) material, ensuring superior safety and performance in critical environments. The LSZH material significantly reduces the emission of toxic and corrosive gases in the event of a fire, making it an ideal choice for use in confined spaces such as data centers, tunnels, and public buildings. This feature not only enhances safety but also complies with stringent fire safety regulations.

Available in a comprehensive range of sizes, the Elevate duct system is designed to accommodate various cable volumes, ensuring flexibility and scalability for your network infrastructure. Whether you need to manage a small bundle of cables or a large volume, our duct system provides the perfect fit. Additionally the Elevate solution includes a wide array of accessories, including bends, tees, and junctions, to meet diverse design requirements and facilitate easy installation and maintenance. This versatility ensures that our duct system can be seamlessly integrated into any network layout, providing a reliable and efficient solution for your fibre optic cable management need.

✓ LSZH Flame Retardant

✓ Easy to Assemble

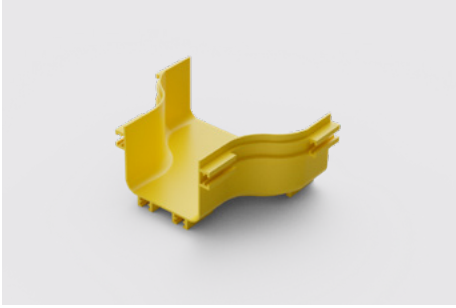
✓ Range of sizes and accessories

✓ UK Design Assistance

Product Specifications

Feature	Values
Colour	Yellow (Pantone 123C)
Material	ABS Plastic
Material Type	LSZH
460-150-RDC-100	
Height	100mm
Width	150-100mm
Weight	-
460-300-RDC-150	
Height	100mm
Width	300-150mm
Weight	-
460-300-RDC-240	
Height	100mm
Width	300-240mm
Weight	-
460-600-RDC-300	
Height	100mm
Width	600-300mm
Weight	-
460-600-RDC-360	
Height	100mm
Width	600-360mm
Weight	-

Product Features



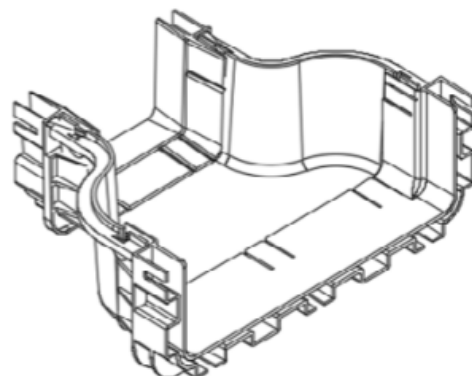
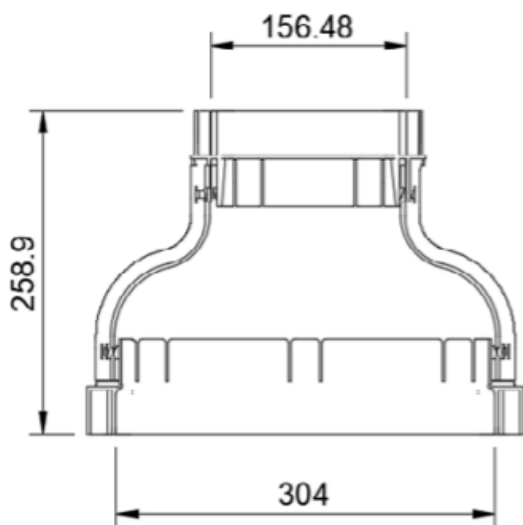
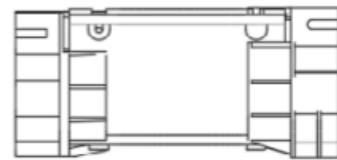
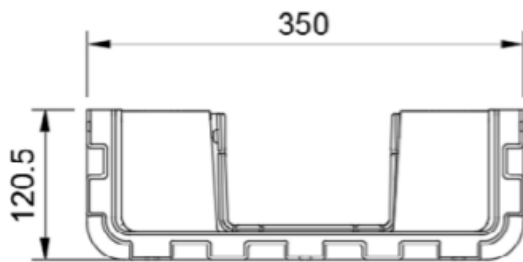
Application - A connector to provide a joint between lengths of straight duct.

Connection Type - x8 M5 Screw and Nut included

Cover - No

Product Drawing

Dimensions shown for 460-300-RDC-150



Product Standards

Applicable standard	Description
Directive 2008/98/EC (WFD)	Waste Framework Directive — compliant. Implemented in the UK through the Waste (England and Wales) Regulations 2011 (SI 2011 No. 988).
ECHA SCIP Database	Compliant; product does not contain SVHCs (Substances of Very High Concern) as defined under REACH Article 33(1). Submission obligations met under EU REACH and UK REACH.
Regulation (EU) 2019/1021 (POPs)	EU Regulation on Persistent Organic Pollutants — compliant. For Great Britain, compliance is aligned with the Persistent Organic Pollutants (Amendment) (EU Exit) Regulations 2020 (SI 2020 No. 1355).
Directive 2011/65/EU (RoHS II)	Restriction of the Use of Certain Hazardous Substances in Electrical and Electronic Equipment — compliant. Applies within EU member states.
Directive (EU) 2015/863 (RoHS III)	Amending Directive 2011/65/EU to add four phthalates (DEHP, BBP, DBP, DIBP) to Annex II — compliant.
UK SI 2012 No. 3032	The Restriction of the Use of Certain Hazardous Substances in Electrical and Electronic Equipment Regulations 2012 (UK RoHS) — compliant for Great Britain. Retained EU law, as amended by the Product Safety and Metrology (Amendment etc.) (EU Exit) Regulations 2019.

Part Number Table

Part Number	Description
460-600-RDC-300	Elevate Fibre Duct Reducer 600 to 300 Coupler
460-600-RDC-360	Elevate Fibre Duct Reducer 600 to 360 Coupler
460-300-RDC-240	Elevate Fibre Duct Reducer 300 to 240 Coupler
460-300-RDC-150	Elevate Fibre Duct Reducer 300 to 150 Coupler
460-150-RDC-100	Elevate Fibre Duct Reducer 150 to 100 Coupler
460-600-RDC-300-CVR	Elevate Fibre Duct Reducer 600 to 300 Coupler cover
460-600-RDC-360-CVR	Elevate Fibre Duct Reducer 600 to 360 Coupler Cover
460-300-RDC-240-CVR	Elevate Fibre Duct Reducer 300 to 240 Coupler Cover
460-300-RDC-150-CVR	Elevate Fibre Duct Reducer 300 to 150 Coupler Cover
460-150-RDC-100-CVR	Elevate Fibre Duct Reducer 150 to 100 Coupler Cover