

Elevate Single Phase Vertical Intelligent PDU (INT3) Individual Socket Switching, 16A EN60309 3m Top-Fed



Product Overview

The Excel Elevate INT3 Intelligent PDU is a high-performance energy monitoring solution, designed and manufactured in the UK to meet the needs of modern data centres. With a focus on precision and versatility, this PDU provides both local and remote overall power monitoring, ensuring detailed and accurate energy consumption tracking.

With its robust design, Excel Elevate INT3 Intelligent PDU is an ideal solution for data centres requiring detailed monitoring and efficient control of power usage, all from a centralised remote management interface.

- ✓ Individual socket monitoring and remote switching
- ✓ Free embedded software for remote management (up to 31 units)
- ✓ Available in single-phase or three-phase configurations
- ✓ Local colour LCD display with RGB backlight
- ✓ Horizontal and vertical mounting options
- ✓ Optional sensors: temperature, humidity, door contacts and SNMP/email alerts

Product Specifications

Feature	Values
Mounting direction	Vertical
Type of electric plug connection	16/32 Amp - EN6039 Style (BS4343) Commando
Number of phases	Single or 3 phase
Cable length	3 m
Number of C13 socket outlets	16, 20, 24
Number of C19 socket outlets	4, 8, 12
Supply voltage	230v (Single Phase), 415v (Three Phase)
Surge Protected	No
Switchable	Yes
SNMP	Yes
Display	Yes
Evaluation	Remote
With LED indication	Yes
With fuse	Yes
Ammeter	Yes
With temperature measurement	Yes

Product Features Explained



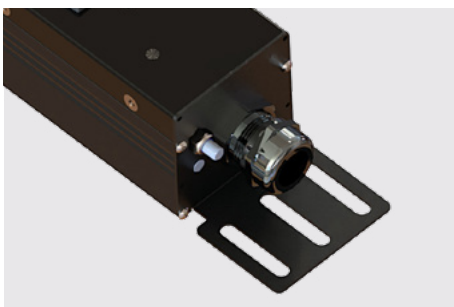
Individual socket monitoring and remote switching allows for real-time monitoring and control of each socket, providing enhanced management capabilities for every connected device.



Equipped with ports to connect sensors for temperature, humidity, water detection, or door access sensors, enabling a comprehensive environmental monitoring system.



The INT3 comes with standard C13 and C19 sockets powered by EN60309 Com16 or Com32 plugs, supporting both single-phase and three-phase configurations. Additionally, the PDU can accommodate other socket types like UK, angled UK (left or right), and Schuko sockets, with up to 48 sockets per unit.



Connect up to 32 PDUs and monitor them all from a single IP address via a master PDU. This master unit includes free software, ensuring easy remote monitoring through a secure, user-friendly HTML browser interface.



Each PDU features a backlit RGB LCD display, showing real-time power usage for all connected devices.

Stay ahead with SNMP and email alerts for critical parameters, ensuring that you can address potential issues before they escalate.

Additional Specifications

Feature	Values
Technology	Overall and individual socket monitoring and switching
Energy metering	RMS volts, RMS amps, kilowatts, frequency, power factor
Metering per input line	Yes
Metering per output receptacle	Yes
Remote outlet switching	Yes
Environmental port	Yes
Networking	SNMP (v1, 2, 3), HTML, HTTP, HTTPS, XML, Email Alerts
Remote management	Yes
Environmental sensors	Temperature sensor port (up to 8 sensors), humidity/temperature sensor, volt-free contacts (3 sets), door contacts, electronic door handle, card reader/pin pads
Frequency	50 - 60 Hz
Main input	85 - 265 VAC
Colour	Black



Product Standards

Applicable standard	Detail
Directive 2008/98/EC (WFD)	Waste Framework Directive — compliant. Implemented in the UK through the Waste (England and Wales) Regulations 2011 (SI 2011 No. 988).
ECHA SCIP Database	Compliant; product does not contain SVHCs (Substances of Very High Concern) as defined under REACH Article 33(1). Submission obligations met under EU REACH and UK REACH.
Regulation (EU) 2019/1021 (POPs)	EU Regulation on Persistent Organic Pollutants — compliant. For Great Britain, compliance is aligned with the Persistent Organic Pollutants (Amendment) (EU Exit) Regulations 2020 (SI 2020 No. 1355).
Directive 2011/65/EU (RoHS II)	Restriction of the Use of Certain Hazardous Substances in Electrical and Electronic Equipment — compliant. Applies within EU member states.
Directive (EU) 2015/863 (RoHS III)	Amending Directive 2011/65/EU to add four phthalates (DEHP, BBP, DBP, DIBP) to Annex II — compliant.
UK SI 2012 No. 3032	The Restriction of the Use of Certain Hazardous Substances in Electrical and Electronic Equipment Regulations 2012 (UK RoHS) — compliant for Great Britain. Retained EU law, as amended by the Product Safety and Metrology (Amendment etc.) (EU Exit) Regulations 2019.

Product Packaging

Material Type	Detail
Cardboard Packaging	FSC certified plain brown cardboard cartons

Part Number Table

Part Number	Description
555-1V-Com16-INT3-16C13-4C19-3T	Elevate 1P Vertical Intelligent PDU (INT3) 16x C13 4x C19 16A EN60309 3m Top-Fed
555-1V-Com32-INT3-16C13-4C19-3T	Elevate 1P Vertical Intelligent PDU (INT3) 16x C13 4x C19 32A EN60309 3m Top-Fed
555-1V-Com16-INT3-20C13-4C19-3T	Elevate 1P Vertical Intelligent PDU (INT3) 20x C13 4x C19 16A EN60309 3m Top-Fed
555-1V-Com32-INT3-20C13-4C19-3T	Elevate 1P Vertical Intelligent PDU (INT3) 20x C13 4x C19 32A EN60309 3m Top-Fed
555-1V-Com32-INT3-24C13-8C19-3B	Elevate 3P Vertical Intelligent PDU (INT3) 24x C13 8x C19 32A EN60309 3m Bottom-Fed
555-1V-Com32-INT3-24C13-12C19-3B	Elevate 3P Vertical Intelligent PDU (INT3) 24x C13 12x C19 32A EN60309 3m Bottom-Fed
555-3V-Com16-INT3-21C13-3C19-3B	Elevate 3P Vertical Intelligent PDU (INT3) 21x C13 3x C19 16A EN60309 3m Bottom Fed
555-3V-Com32-INT3-21C13-3C19-3B	Elevate 3P Vertical Intelligent PDU (INT3) 21x C13 3x C19 32A EN60309 3m Bottom Fed